

THE WAYNE HERALD

24 pages
three sections

NINETY-FOURTH YEAR

Second Class Postage Paid at Wayne, Nebraska

WAYNE, NEBRASKA 68787, THURSDAY, DECEMBER 18, 1969

Published Every Monday and Thursday at
114 Main, Wayne, Nebraska 68787

NUMBER SIXTY-EIGHT

Winners Get \$50 Cash; Car Will Be Given Soon

Shoppers are discovering "It pays to shop in Wayne." Names of 150 more Wayne residents were added to the list of winners Monday and Tuesday nights in the drawings for \$50 in cash. Each was the holder of the first number of 20 numbers listed on the two nights.

Those winning \$50 in previous Christmas drawings were Mr. and Mrs. Jim Schultz, Mrs. Gerald Pospisil and Mrs. Amos Echtenkamp.

Mrs. Benjamin Bernstein of Wayne was winner of the \$50 Monday. She said her husband brought the list of numbers home and discovering she held the

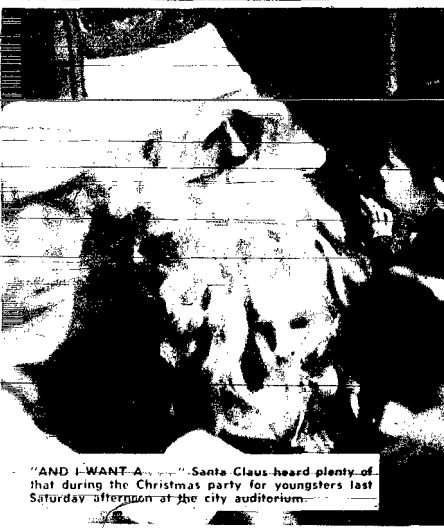
numbered ticket listed in first place she turned it in to the Wayne Chamber of Commerce around 5 p.m. Asked as to what she thought she might do with her prize, Mrs. Bernstein replied, "I haven't really thought too much about it, but one can always find a place for it."

Tuesday evening, an elated housewife and student at Wayne State College, Mrs. Gerald Overton, realized she had the winning ticket about 5 p.m. Her husband had the car, however, so she called her mother, Mrs. Adon Jeffrey, who brought her

See WINNERS, page 9



DEAD EYE DICK needs just a little help from this college student during last Saturday's children's Christmas party at the city auditorium.



"AND I WANT A..." Santa Claus heard plenty of that during the Christmas party for youngsters last Saturday afternoon at the city auditorium.



"MAY WE OPEN THE PRESENTS?" These youngsters were prize winners in the art contest at the Christmas party in the city auditorium Saturday. They are, from left to right, (front row) Ann Edmunds, Anita Sandahl, Pam Sutherland, Lauri Lund and Jeff March. Debbie Dittman was also a winner but not present for the photo. Sponsors in the back row are, from left, Wayne Peterson, Bill Bennett, Tom Marschick and Jack McRae. Fred Johnson is reclining in the foreground.

Up 'n Coming

—Today (Thursday), businessmen's coffee at Wayne Vision Center, 9-11 a.m.

—Today, Wayne State graduation in Rice Auditorium, 4 p.m.

—Today, orientation meeting at Wayne National Guard Armory, 7:30 p.m.

—Monday, start of beef unit of adult farmer class at Wayne High, 8 p.m.

—Tuesday, presentation of new car to winner of drawing, 8 p.m.

Allenites Hosts for Exchange Students

Two exchange students will arrive in Allen this week to make their homes while attending Allen High School for the next three months. They will attend the school under the International Fellowship Organization.

A boy, 16 years old will live with Mr. and Mrs. Richard Schaefer and their family. He is from Argentina and will arrive in Omaha by plane Saturday night. A 17-year-old girl from Brazil will make her home with the Mr. and Mrs. Marvin Reuter family. She will arrive by plane in Omaha tonight (Thursday).

More information on the two exchange students—first ones ever to attend Allen High—will be carried in Monday's issue of The Wayne Herald.

Santa at Winside

The Winside Community Club has made arrangements with North Pole Headquarters for Santa Claus to arrive in Winside at 3 p.m. Saturday at the city auditorium.

Richard Miller, president of the club, said arrangements have been made with Jolly, old Nick, to arrive on a fire truck. Santa will have a bag filled with treats for all of the youngsters.

Emerson Native Gets Ak-Sar-Ben Help at WSC

Ak-Sar-Ben Scholarships were awarded to four students at Wayne State College this fall: Marilyn Habrock of Emerson, Bill Butler of Bassett, Karen Ritter of Omaha, and Peggy Zach of Humphrey. The scholarship provides \$100 for each of two terms.

Habrock, a junior business major, is a member of the Student Senate, a counselor and treasurer of Morey Hall, member of Tau Kappa Epsilon fraternity. He plans to go into business management or accounting. A 1967 graduate of Emerson-Hubbard High School, he is the son of Mr. and Mrs. George Habrock.

Butler, a senior majoring in elementary education and minor in physical education and guidance, plans to teach.

He is a member of Kappa Kappa Psi, national honorary for band. See AK-SAR-BEN, page 4

Wayne State Graduates 19 Seniors with Honors

Wayne State College will graduate 19 of its seniors with academic honors at winter commencement today (Thursday).

Among them are six who completed their studies magna cum laude, with grade-point averages from 3.50 to 3.70. They are Gary Smith of Newman Grove, 3.75; John Martens of Ashton, Iowa, 3.71; Sharyn McAlin of Norfolk, 3.58; Phyllis Svoboda Brunken of Columbus, 3.57; Yolán Cole of

Weather

Just 12 months ago Wayne residents were trying to keep snow scooped off their walks as blizzard conditions set in. Dame Nature has been rather kind to our area this fall, however, and the first day of winter officially arrives Sunday so anything can happen.

Temperatures through Saturday, according to the U. S. Weather Bureau in Norfolk, will average from four to six degrees above normal in the east part of Nebraska. Normal high is 35 degrees while 14 degrees is the normal low. Precipitation is expected to average about a tenth of an inch or less.

Following are the way temperatures looked during the past week in Wayne:

Date	HI	LO
December 10	28	2
December 11	24	6
December 12	30	0
December 13	46	20
December 14	52	20
December 15	46	14
December 16	34	18

1969	DECEMBER	1969
1	2	3
4	5	6
7	8	9
10	11	12
13	14	15
16	17	18
19	20	21
22	23	24
25	26	27
28	29	30
31		

Open Nights Boxed

Helping the businesses we now have to grow and prosper is the biggest business of all, says the SBA. That itself is a substantial contribution to America's economy, SBA notes.

The monthly interviews the SBA has is one way it tries to achieve its policy of encouraging, assisting and protecting the small businesses in the nation. This is vital to our national welfare, according to SBA, if we are to insure a highly competitive free enterprise system as the basis of the American way of life.

'Messiah' Soloist

John Brandstetter, son of Mr. and Mrs. O. K. Brandstetter of Wayne, was one of four soloists during a presentation of Handel's "Messiah" at the University of Nebraska's School of Music.

The program was presented Sunday afternoon at the University Coliseum with Brandstetter, a 1967 graduate of Wayne High School, featured as the bass soloist.



Auto Hits Trees

A Laurel youth escaped with minor injuries Sunday in a one-car mishap around 3:20 p.m. when his southbound auto left Highway 15 a little more than five miles north of Wayne, according to the Wayne County Sheriff's office.

Timothy Klefer, 18, was driving a 1964 Chevrolet and while attempting to pass another vehicle, according to authorities, his auto started skidding sideways and ended up in the west ditch striking some trees.

Investigating officers report the auto a total loss. Klefer was alone in the car at the time.



NERVE CENTER of the city power plant is this control room with its bank of instruments which tell the plant operators all they need to know about the engines producing electricity. Discussing their work are (from left) Ray Barg, Albert Anderson and Herman "Bud" Wacker. The light plant will hold open house Sunday afternoon from one to five o'clock. A special section of this issue of the paper is devoted to stories, pictures and advertisements about the light plant.

Over \$37 Million Planned For Roads in NE Nebraska

By Norvin Hansen

A total of just over \$4 million will be spent on road construction and improvement in the 11 northeast Nebraska counties of Knox, (e-



Mrs. Ethel Martelle

Welfare Director Named President Of State Group

A Wayne resident, Mrs. Ethel Martelle, county welfare director, was elected president of the state association of county welfare directors during a meeting in Omaha last week.

Director Martelle was one of several Wayne County officials in Omaha attending the annual county officials meeting Wednesday through Friday. Others attending were Norris Weible, clerk; Leona Bahde, treasurer, and Commissioners George Stolz and John Surber. Treasurer Bahde stepped out of the office of See DIRECTOR, page 5

Beer Request Gets Council's Okay

In a special meeting Monday evening the city council gave approval to a request for an on and off sale beer license for the business at 115 Main St. The request was made by Norman E. and James M. Fletcher and William R. Scott.

The council also approved joining with the Wayne Kiwanis in supporting the annual Christmas lighting contest. The three winners of that contest, who will be announced next week, will receive gift certificates amounting to \$25, \$15 and \$10 which can be applied toward the purchase of any electrical appliance.

Councilmen also gave some consideration to the possibility of heating the city building on S. Pearl St. with waste water from the city light plant. The water, which is not really wasted since it is cooled and pumped back into the plant, would be piped underground the short distance to the plant and would then be piped back to a cooling unit before being used again at the plant. Only facilities the city would have to buy would be the radiators and fans. No decision was reached on the subject.

Santa's Mailbag Gets Opened in Next Issue

Santa Claus will have to step up production at his North Pole toy plant if he hopes to meet all the orders from youngsters in the Wayne area.

Big on the lists those youngsters have been sending him are talking dolls, ironing boards and ovens for the girls, and footballs, trucks and drum sets for the boys. Anyway those are some of the things mentioned by the youngsters writing to Santa in care of The Wayne Herald.

That Christmas letter mailbag includes over a dozen letters from children in the area. They will be published in Monday's issue of the paper—just in time for Santa to read them before he leaves on his trip Christmas Eve.

Petitions Say School Levy 'Excessive'

Taxpayers in 12 Nebraska counties including Wayne County have recently filed court suits. Each of the petitions charges an excessive levy of non-resident high school tuition.

At issue in the court actions is LB 910 which was passed by the 1969 Nebraska Legislature. The measure allows the setting of free high school tuition at not less than average per-pupil costs of the receiving district for the preceding year. Levies in some districts were set above these per-pupil costs.

Counties other than Wayne involved in the "excessive" court actions include Boone, Buffalo, Colfax, Cuming, Dawes, Dawson, Garfield, Johnson, Platte, Saunders and Sheridan.

Earlier this fall in the District Court at Wayne a petition was signed by the following plaintiffs: Frederick H. Mann, Cornelius Leonard, John Heinemann, Leslie Youngmeyer, Merlyn Rehhardt, Dwaine Rethwisch and Victor Kleseche. They and other property owners in non-high school districts of the county named the Wayne County Board of Equalization as defendants in the petition.

The plaintiffs allege the non-resident high school tuition levy for 1969-1970 is in excess of the requirements; and that portions of the levy are for an unlawful and unnecessary purpose; and that the levy was made in reliance on the erroneous and unlawful certifications in the statement entitled "Report of Amount of Non-Resident High School Tuition Fund Required." The statement is signed by Mrs. Gladys Porter, Wayne County superintendent of schools. Plaintiffs allege the statement to be in error and unlawful.

The petition filed by the plaintiffs in the District Court claims tuition rates submitted by the school superintendents of the schools in Wayne County approved for non-resident high school tuition privileges for 1969-1970 are in violation of the limitations of LB 190, in that the tuition rates certified by the superintendents have no relationship to, and are in excess of, the actual per-See PETITIONS, page 5

The Wayne Herald

Serving Northeast Nebraska's Great Farming Area

NATIONAL NEWSPAPER ASSOCIATION Founded 1897
Press & News Sustaining Member - 1970

State Award Winner

1967

General Excellence Contest Nebraska Press Association

114 Main Street Wayne, Nebraska 68787 Phone 375-2600

Established in 1875, a newspaper published semi-weekly, Monday and Thursday (except holidays), by Wayne Herald Publishing Company, Inc., J. Alan Cramer, President, entered in the post-office at Wayne, Nebraska 68787 2nd class postage paid at Wayne, Nebraska 68787

Norvin Hansen News Editor Jim Marsh Business Manager
Poetry—The Wayne Herald does not feature a literary page and does not have a literary editor. Therefore poetry is not accepted for free publication.

Official Newspaper of the City of Wayne, the County of Wayne and the State of Nebraska

SUBSCRIPTION RATES

In Wayne: Pierce-Cedar-Dixon-Thurston-Cuming-Stanton and Madison counties: \$6.50 per year, \$5.00 for six months, \$3.25 for three months. Outside counties mentioned: \$7.50 per year, \$6.00 for six months, \$4.75 for three months. Single copies 10c.

CHURCH SERVICES

Wesleyan Church (Fred Warrington, pastor)
Sunday, Dec. 21: Sunday school, 10 a.m.; worship, 11; Adult study, Wesleyan youth and Children's meeting, 7 p.m.; Christmas program, 7:30.
Tuesday, Dec. 23: WWF prayer, 9:30 a.m.
Wednesday, Dec. 24: Christmas prayer service, 7:30 p.m.

Immanuel Lutheran Church (A. W. Gode, pastor)
Saturday, Dec. 20: Saturday school, 9:30 a.m.
Sunday, Dec. 21: Sunday school, 9:30 a.m.; worship, 10:30; Sunday school Christmas practice, 2 p.m.

St. Paul's Lutheran Church (Doniver Peterson, pastor)
Thursday, Dec. 18: Eighth grade catechetics, 7 p.m.; seventh and ninth grade catechetics, 8.
Sunday, Dec. 21: Sunday school, 9:15 a.m.; worship, 10:30; Sunday school Christmas program, 7:30 p.m.
Wednesday, Dec. 24: Christmas Eve service, 8 p.m.

First United Methodist Church (Cecil Bliss, pastor)
Saturday, Dec. 20: Eighth grade confirmation, 10 a.m.
Sunday, Dec. 21: Worship, 9:30 and 11 a.m.; church school, 9:45; Senior LF Caroling, 5 p.m.
Monday, Dec. 22: Seventh grade confirmation, 4:15 p.m.
Wednesday, Dec. 24: Candle-light service, 6:30 p.m.

Assembly of God Church (Robert McCown, pastor)
Sunday, Dec. 21: Sunday school, 9:45 a.m.; worship, 11; Christ's Ambassadors, 6:45 p.m.; evening service, 7:30.
Wednesday, Dec. 24: Bible study and prayer service, 7:30 p.m.

Theophilus Church (Fred Warrington, pastor)
Sunday, Dec. 21: Worship, 9:30 a.m.; Sunday school, 10:30.
Tuesday, Dec. 23: Council meeting, 8 p.m.
Wednesday, Dec. 24: Christmas program, 7:30 p.m.

Grace Lutheran Church (E. J. Bernthal, pastor)
Saturday, Dec. 20: Junior choir, 9-9:40 a.m.; final Sunday school Christmas practice, 9:40; no confirmation instruction.
Sunday, Dec. 21: Sunday school and Bible classes joint assembly, 9 a.m.; worship, 10; church decorating, 1 p.m.; Walther League carry-in supper, 6.
Tuesday, Dec. 23: Junior choir, 7-7 p.m.; senior choir, 7:30. Wednesday, Dec. 24: Children's Christmas Eve program, 7 p.m.
Thursday, Dec. 25: Christmas Day services, 10 a.m.

Redeemer Lutheran Church (S. K. de Freese, pastor)
Saturday, Dec. 20: Confirmation classes will not meet, but again on Jan. 3; Junior choir, 10 a.m.
Sunday, Dec. 21: Early services, 9 a.m.; Adult Bible Class and Sunday school, 10; late services, 11, Broadcast KTCM; Sunday school Christmas program, kindergarten-sixth grade, 7:30 p.m.
Wednesday, Dec. 24: Christmas family candlelight service and pageant, 7:30 p.m.

First Baptist Church (Frank Pedersen, pastor)
Saturday, Dec. 20: Sunday school Christmas program rehearsal, 1 p.m.
Sunday, Dec. 21: Sunday school, 9:45 a.m.; Christmas service, 11; Christmas program, 7:30 p.m.
Tuesday, Dec. 23: Youth Christmas party, 6:30 p.m.

First Church of Christ (Kenneth Locking, pastor)
Sunday, Dec. 21: Bible school, 10 a.m.; communion and worship, 10:50.
Wednesday, Dec. 24: Prayer meeting, 7:30 p.m.

St. Mary's Catholic Church (Paul Begley, pastor)
Saturday, Dec. 20: Confessions, 4:30-5:30 and 7:30-8:30 p.m.
Sunday, Dec. 21: Mass, 7 a.m., 8:30 and 10.

Monday, Dec. 22: Building committee meeting, 7 a.m.

United Presbyterian Church (C. Paul Russell, pastor)
Sunday, Dec. 21: Worship, 9:45 a.m.; church school, 11; senior H: carolling, Methodist Church, 5 p.m.
Wednesday, Dec. 24: Candle and carol service, church, 7 p.m.

St. Anselm's Episcopal Church (James M. Barnett, pastor)
Sunday, Dec. 21: Prayer, 10:30 a.m.

First Trinity Lutheran, Altona Missouri Synod (E. A. Binger, pastor)
Thursday, Dec. 18: Sunday school teacher's meeting, St. Paul's, Wakefield, 7:30 p.m.
Sunday, Dec. 21: Worship, 9 a.m.; Sunday school, 10:15.
Monday, Dec. 22: Walther League, 8 p.m.
Wednesday, Dec. 24: Christmas Eve Worship, 6 p.m.

Area Woman Is Third Honored

Mrs. Gena Fae Martin of Laurel is the third area woman to be named Outstanding Young Woman of America. Her biography along with that of Mrs. Forrest Smith, Allen, and Mrs. Marlen Johnson, Concord, will appear in the annual compilation, "Outstanding Young Women of America."

Mrs. Martin was nominated by the Laurel Tuesday Club, which is affiliated with the Nebraska Federated Women's Clubs, because of her active work with youth and in the community. Mrs. Martin is a den mother for Den 2 of the Laurel Cub Scouts, Pack 176, and is a former church school teacher in the United Presbyterian Church. She is affiliated with the Slouland Community Blood Bank and is treasurer of the Northeast Nebraska Family and Community Affairs Council, Inc.

Mrs. Martin is married to Kendall "Burr" Martin, who manages a grain elevator in Laurel. They have two sons, Mike, nine, in the fourth grade, and Phillip, six, in kindergarten. In addition to her job as wife and mother, Mrs. Martin is school nurse at the Laurel Public Schools.

Mrs. Martin is one of 5,000 women between the ages of 21 and 35 whose names were submitted by women's organizations and college alumnae associations across the country for Outstanding Young Women of America. Fifty of these women (one from each state) will be selected to receive state awards.

Elect New Officers at WWI Auxiliary Meeting

Officers elected at the WWI Auxiliary meeting Monday evening at the Women's Club room were Mrs. Charles Steckman, president; Mrs. Pearl Griffith, senior vice-president; Mrs. Walter Chinn, junior vice-president; Mrs. Laurie Beckman, secretary; Mrs. Julia Haas, treasurer; Mrs. John Groscurth, chaplain; Mrs. Hattie McNutt, conductress and Mrs. Edith Dale, patriotic instructor. Mrs. Alfred Sydow was installing officer.

The group decided to donate to the Veteran's Annex at Norfolk. The ten auxiliary members were joined by the ten barracks members following the business meetings and a gift exchange was held. Cards furnished entertainment. Jan. 12 meeting will be at the Women's Club rooms.

Officers Installed At Redeemer's LW

Officers installed at the Redeemer Lutheran Church Women's meeting last Wednesday afternoon were Mrs. Paul Sievers, president; Mrs. Jim Hummel, vice-president; and Mrs. Richard Carmen, treasurer. Installing officer was Mrs. S. K. de Freese. Mrs. Alvin Meyer, outgoing president, delivered the president's report and delivered a farewell and thank-you address. The installation was held at the covered-dish luncheon meeting at the church parlors. Sixty-five members and guests were present and the program was "Preparing For The Christmas Holy Days." Musical numbers presented were "The Magnificat," by Mrs. Hummel, and "To, How A Rose Ere Blooming," by a quartet composed of Mrs. Ted Bahe, Mrs. Bill Kugler, Mrs. Les Lutt and Mrs. Fritz Ellis. The de Freeses were presented a Christmas gift by the association. Circles will meet Jan. 14 at 9:15 a.m.; 2 p.m. and 8 p.m.

King's Daughters Meet

King's Daughters met Dec. 4 at the First Church of Christ. Mrs. Kenneth Locking had the lesson on "Isaac." The birthday of Mrs. Marjorie Bennet was observed and Mrs. Montie Bomer served. Next meeting will be Jan. 5.

Women's Page...

sandra breffkreutz, society editor



MR. AND MRS. JOHN ROHLF. Winside, will observe their 50th wedding anniversary Sunday, Dec. 28, with open house from 1 to 4 p.m. at the Winside auditorium. A short program will be held at 2:15 p.m. All friends and relatives are invited to attend. Hosting the event will be the couple's children, Mrs. Paul Zoffka and Mrs. Herbert Jaeger. Winside, and Virgil Rohlf, Omaha.

Church Programs Set at Wakefield

Christmas plans at the Wakefield churches include 11 p.m. Christmas Eve services at both the Salem Lutheran Church and the Evangelical Covenant Church. The public is invited to attend. Children's Christmas programs will be held at 11 a.m. Dec. 21 at Salem Lutheran Church; 7 p.m. Dec. 21 at Covenant Church; 11 a.m., Dec. 21 at the Presbyterian Church; 7 p.m., Dec. 21 at the Christian Church and 7 p.m., Dec. 24 at St. John's Lutheran Church.

Host to Dinner Party In Honor of Parents

Hosting a dinner party Saturday evening in the home of Mr. and Mrs. Emmett Roberts for their 25th wedding anniversary, were the couple's children, Mr. and Mrs. Dennis Miller, Wayne, Jerry Roberts, South Sioux City, and JoAnne Roberts, Allen. Guests included Mr. and Mrs. Irvin Bagley and Roger, Sioux City; Mrs. Everett Roberts and Alan, Omaha; Mr. and Mrs. Ernest Bagley and Mr. and Mrs. G. E. Henimore. Evening guests were Mr. and Mrs. Lewis Bales, Mr. and Mrs. Ted Johnson, Dixon, Mr. and Mrs. Laibay Roberts and Jeanne, Mr. and Mrs. Bill Snyder and Mrs. Alice Steele.

Mrs. Carlson to Present Concert

Mrs. Eldon Bull, director of the Senior Citizens Center in Wayne, has announced that guest pianist Mrs. Albert G. Carlson, Wayne, will present a concert of Christmas piano selections and will narrate the Christmas story at 2 p.m. Friday at the center. The program, which will be concluded with a Christmas tea, is open to anyone over 50.

Honor Kathy Stanley With Bridal Shower

A miscellaneous bridal shower was held Friday evening at the Dixon School house to honor Kathy Stanley, who plans to wed Dennis Gohier at St. Anne's Catholic Church, Dixon, Dec. 20. The gift table, centered with poinsettias, was decorated in the bride-elect's chosen colors, green and white. Pencil games served for entertainment. Hostesses were Mrs. Claire Gleason and Mrs. Troxel, Coleridge; Mrs. Herman Schrieber, Mrs. Harold Burns and Mrs. Gerald Stanley, Dixon.

Mrs. Corbit Hostess At Christmas Party

Monday evening Mrs. William Corbit was hostess to 17 members of Monday Mrs. Home Extension Club at a cooperative Christmas dinner party. Co-hostess was Mrs. Jerry Baler, Mrs. Don Cunningham, Kirkwood, Wash., was a guest.

White pompons and red carnations with white tapers centered the tables and decorations featured Santa boot nut cups and fresh greenery. Mrs. Dean Sorenson gave a Christmas reading and a gift exchange was held. Mrs. Lloyd Luedtke was appointed health leader and Mrs. Evan Bennett reading leader. Jan. 19 meeting will be with Mrs. Larry Carlson at 8 p.m.

Homemakers Club Has Christmas Meeting

Progressive Homemakers Club held their Christmas party Saturday afternoon in the home of Mrs. Ervin Hagemann with ten members present. Secret heart sisters' names were revealed and new names were drawn. A gift exchange was held and cards played, with prizes going to Mrs. Bernard Spitzberger and Mrs. Otto Saul, Mrs. Emma Hicks will host the 2 p.m. meeting Jan. 20.

Over 60 Attend Aid At Grace Lutheran
Forty-six members and 19 guests attended the Grace Lutheran Ladies Aid carry-in luncheon meeting Dec. 10 at the church. Hostesses were Mrs. Willis Nelson, Mrs. Mima Otte, Mrs. Emma Otte and Mrs. Henry Rethwisch. Birthdays noted were those of Mrs. Harold Ekberg and Mrs. Willis Nelson. Mrs. Ekberg was in charge of the program on the Advent wreath. The free-will offering was sent to the Lutheran Family Service. January 14 meeting will be at the church at 2 p.m.

Mrs. Bichel Hostess To LaPorte Wednesday
Mrs. Carl Bichel was hostess Wednesday noon to a covered dish luncheon for the LaPorte Club. Ten members were present. The group decided to donate to a home in Omaha instead of having a gift exchange. Following the business meeting pitch was played with Mrs. Sitna Hammer and Mrs. Kenneth Ramsey winning. Mrs. Hammer will be hostess to the 2 p.m. meeting Jan. 14.

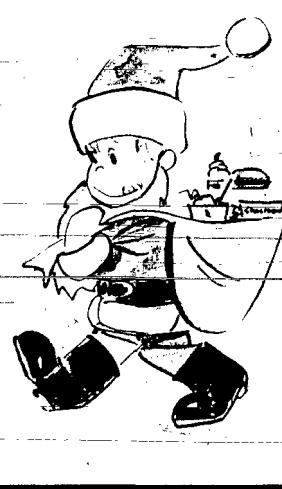
Fete Winside Couple
On Silver Anniversary
Guests Thursday evening in the Maurice Lindsay home in honor of their 25th wedding anniversary were the Chifford Lindsays, Randolph; Archie Lindsays, Laurel; Mrs. Frank Johnson, Harold Seyles and Otto Maases, all of Laurel; Delmar Williams and Mrs. Terry Lindsay and family, Norfolk; Larry Lindsays, Wayne; Art, Pete and Marge Jensen, Winside. Mr. and Mrs. Lindsay were married Dec. 11, 1944 at Woodbine, Iowa, and have lived in the Winside area since then.

Honor Annie Tuttle On Birthday Thursday
To honor the birthday of Mrs. Annie Tuttle at Dahl Retirement Center Thursday, Mrs. Gertie Erwin, Mrs. Hans Johnson, Mrs. Kenneth Olson, Mrs. Jim Nelson, Mrs. Verl Carlson and Mrs. Vern Carlson of LCW Circle III in Concord, visited and brought birthday cakes. Mrs. Tuttle is an honorary member of the group. Also there was Mrs. Tuttle's daughter, Mrs. Lyle Cleveland, who furnished ice cream. Coffee was furnished by the Home.

Social Scene

Thursday, Dec. 18
Happy Homemakers Home Extension carry-in dinner, Mrs. Bernard Spitzberger
Theophilus Ladies Aid no-host luncheon, church, 1:30 p.m.
Assembly of God WMC Christmas party, Hazel Horensen home
Holy Eight, Mrs. Meryl Goshorn
Pilots Improvement Association
Friday, Dec. 19
ONO, Frank Prather home
Blue Swinging TOPS Christmas party
Piano concert, Senior Citizens Center, 2 p.m.
Wayne Hospital Auxiliary, Woman's Club room, 2 p.m.
Sunday, Dec. 21
Wayne High School orchestra and choir Christmas concert, concert hall, 3 p.m.
Monday, Dec. 22
Fireman's Auxiliary, firehall, 8 p.m.

You Get a BAG FULL OF GOODIES When You Stop at the Lil' Duffer!



HERE ARE JUST A FEW SANTA SAVERS:


- Cheeseburgers 29c
- Chuck Wagons 50c
- Tenderloins 45c
- Fish Sandwich 30c
- French Fries 20c
- Floats 25c
- Freezes 25c
- Shakes 30c
- Soft Drinks 10-15-25

Phone your order in to 375-1900

HOURS: Sun. thru Thurs. 10 to 11 Fri., 10 to 12 Sat., 10 - 1

Lil' Duffer

YOUR FRIEND OR BANKER?



Which would you prefer to have handle your financial affairs, a generous friend or a practical and objective banker? Our bank offers every personal, family, and business banking service you may need, of course, but to assure you THE BEST at all times we, quite frankly, are bankers first and then often friends.

A FULL SERVICE BANK
First National Bank
MEMBER A.D.I.C. WAYNE, NEBRASKA
307 Main St. Phone 375-2525

GAMBLES LOWEST PRICES ON FAMOUS NAME APPLIANCES!

 Sunbeam COFFEE MAKER \$1100 1.6 liter stainless coffee-maker. Has 7 heat locks top, pop-up basket in brewer. Rapid boils & 7 cups.	 Sunbeam BUFFET SKILLET \$1100 Stainless buffet styling. Heat control removes for easy cleaning. Close cover leaf design. Heat element.	 TORRMASTER PORTABLE BROILER \$1087 Mini-broil also warms. Roasts. Automatic temp control. Sleek chrome finish. Fold-up handle. Easy storing.
 UDICO CAN OPENER \$895 Gentle press of lever opens cans of all sizes. Touch a button, cutting unit slides off for easy cleaning.	 HAMILTON BEACH PORTABLE MIXER \$1188 Handsome portable mixer. Based on original. Getting control beats ejector. 8 1/2 cups. A great gift!	 Oster Pushbutton BLENDER \$2495 Use Your Credit! Time-saving, 7 speed pushbutton blender creates tempting dishes 5 cup top, both ends open cleans easily.
 Lady Vanity HAIR DRYER \$1988 Remote control lets you dial four heat settings without turning around. Professional salon style hood adjust.	 PROCTOR Spray-Steam IRON \$1488 Guides through ironing on non-iron fabric. Steeple pushbutton spray steam a day. Wash n' wear settings.	 Lady Vanity HAIR CURLER \$1588 A fresh hairdo in minutes. electrically. No water, no mess. 14 tapered sized curlers. 14 heated.

OPEN SUNDAY, DEC. 21 for Your Shopping Convenience

Pastor Announces Christmas Plans

The Rev. E. J. Bernthal of Grace Lutheran Church, Wayne, has announced the schedule of holiday events at the church, which begins Saturday morning with the final children's Christmas program rehearsal. Residents of Dahl Retirement Center, who might find it difficult to get out the evening of the program, are invited and will be assisted to this rehearsal, which will include recitation, song and ta-

bleau. The program itself, "Christmas Eve Around The World," will begin at 7 p.m. Christmas Eve. Customs and carols from several countries and a manger tableau by eighth grade pupils will be featured. A nativity film, "Holy Night," will be shown during the Sunday school hour to all Sunday school and Bible classes at 9 a.m. Dec. 21. Parents, pupils and staff personnel are all invited to see the film. Pastor Bernthal's sermon that morning, "Christmas Contrasts," will be based upon "I Corin-

OF INTEREST TO WOMEN

thians." Following the 10 a.m. Advent service the youth group will decorate the church. They also have planned to carol and gather afterward for a 6 p.m. carry-in supper. Christmas Day services at 10 a.m. will feature the senior choir, directed by Sally Berg, and the junior choir, directed by Mrs. Don Kubik.

The Rev. Otto H. Wittig will speak at worship services Sunday, Dec. 28, and the holiday season will be concluded with a New Year's Eve communion service Dec. 31 at 7:30 p.m. and a New Year's Day worship Jan. 1 at 10 a.m.

Elect New Officers At OES Meet Dec. 8

Officers were elected at the Wayne Chapter 194, OES meeting Dec. 8 at the Masonic Temple. Taking over next year will be Joan Hansen, Worthy Matron; Stanley Hansen, Worthy Patron; Mrs. Lois Jacob, Associate Matron; Keith Jech, Associate Patron; Mrs. Pauline Meréphant, secretary; Mrs. Frieda Hahlbeck, treasurer; Mrs. Gladys Tolman, conductress and Mrs. Bonnie Land, Associate conductress. Installation will be held at the Jan. 12 meeting at the temple.

Nine Answer Roll Call At Roving Gardeners

Nine members answered roll call at the Roving Gardeners Club meeting Dec. 11 by telling about their best remembered Christmas. Members brought Christmas arrangements and a gift exchange was held. Christmas games served for entertainment. The cooperative Christmas dinner and meeting were held in the home of Mrs. Val Damme, Jan. 8 meeting will be with Mrs. Harris Hebenmann at 2 p.m.

Immanuel Aid Holds Christmas Luncheon

Immanuel Lutheran Ladies Aid held their Christmas luncheon at the church last Thursday with 28 members and 16 guests attending. Mrs. Paul Lessman gave the welcome and readings were given by Mrs. Harlan Ruwe, Mrs. Marvin Echtenkamp, Mrs. Ed Meyer, Mrs. Harvey Echtenkamp and Mrs. Everett Hank.

Mrs. Ron Ponierick showed a Christmas film and Mrs. Lowell Johnson, Aid president, presented an 8th birthday gift to Mrs. William L. Wischof. The group enjoyed Christmas carols in English and German.

January 15 meeting will be held at the church at 2 p.m.

Wakefield Lads Erect Nativity

Boy Scouts from Wakefield's Troop 172 have converted the vacant lot on Wakefield's Main Street from weeds and debris to a meaningful Christmas scene featuring the Nativity and a Christmas tree.

Scout Chuck Rouse was in charge of arrangements and work details. Assistance was given by Scouts Steve Brossler, Rusty Johnson, Bud Swanson, Jeff Groves and Kirk Peters.

Other Scouts and Cub Scouts helping were Curtis and Jon Groves, Dennis and Danny Byers, Scott Mills, John Viton, Craig Yost, Randy Harding, Elton Coleman and Richard Eckley.

The Scouts thank Bernthal Gustafson for the tree; Wakefield's City Council and mayor for their assistance and cooperation; the Presbyterian Church and Dr. Paul Byers for the use of their Nativity scenes.

Christmas Treasures to make her dreams come true



PANTY HOSE by Kayser \$250



Those everloving KNITS - R & K Originals, Butte Knit, Pendleton, and many others. Priced from \$35

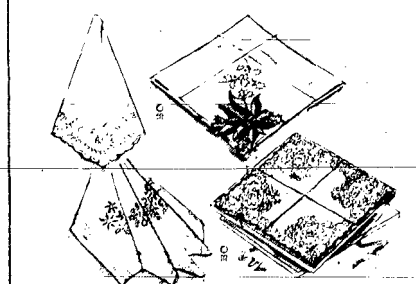


Lovely HANDBAGS for her. \$5 to \$15

CHRISTMAS Only 6 SHOPPING DAYS

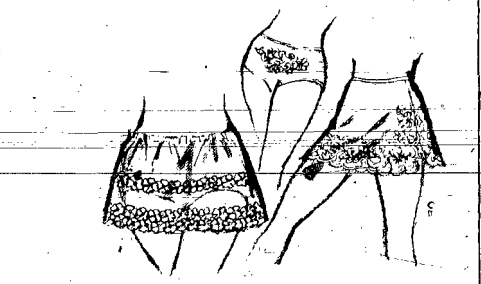


Surprise her with a SCARF \$1.50 to \$6.00



Happy little Extras, HANKIES \$1 and \$2

Swan's apparel for Women



Those Intimate little things, by Kayser. \$1 to \$6

Monday received during the fall ingathering was sent to the homes in Plattsmouth and Fremont.

Dixon Girl Attends Recent National Meet

Lynette Noe, daughter of Mr. and Mrs. Leslie Noe, Dixon, who was recently elected president of Arkansas Student Nurses Association at Little Rock, attended the National Council of State Presidents at Baylor University, Dallas, Texas, Nov. 28 and 29.

Present were 34 state presidents and Frank Lang, national president, and Mary Ann Tuft, newly appointed executive director. All were guests of the Baylor Medical Center.

Miss Noe, who attended the University of Nebraska for two years, began her studies at Little Rock this past July.

Reveal Engagement Of Gail Middleton

The engagement of Gail Jean Middleton to Danny Lee Jaeger has been revealed by the bride-elect's parents, Mr. and Mrs. LeRoy Middleton, Wayne. Mr. Jaeger's parents are Mr. and Mrs. Herbert Jaeger, Winside.



Miss Middleton is a graduate of Wayne High School and Automation Machine Training Center in Kansas City, Mo. Her fiancé, a 1968 graduate of Winside High School, is a sophomore at Wayne State College. No wedding date has been set.

Daughter Baptized At Sunday Service

Dana Rae Anderson, daughter of Mr. and Mrs. Harlin Anderson, Concord, was baptized Sunday during morning worship at Concordia Lutheran Church. Sponsors were Mr. and Mrs. Larry Test, Wayne, and dinner guests afterward in the Anderson home were Tests, the Rev. and Mrs. John Edlundson and family, Mr. and Mrs. Arthur T. Anderson, Mr. and Mrs. Laren Isom and Mrs. Robert Blohm and Kristy, Allen.

Rev. Russert Speaker At LWML Supper Meet

The Rev. Mark Russert of Norfolk Grace Lutheran Church was guest speaker at the Grace Lutheran LWML potluck supper meeting last Tuesday evening. He spoke and showed slides on his trip to Israel and The Holy Land. Eleven members, 11 guests and the Rev. and Mrs. Bernthal were present.

Jan. 13 meeting will be at 8 p.m. at the church.

Install Two Officers At St. Mary's Guild

St. Mary's Guild met Dec. 9 with 21 members at the school hall. Mrs. Gerald Pospisil installed Mrs. George Goblirsch, new president, and Mrs. Pat Gross, new treasurer.

Plans were made for the parish Christmas party Wednesday evening at the school with the children's program and Santa Claus' appearance. Next meeting will be Jan. 22 at 8 p.m.

Hold Dinner Party at Les' Saturday Night

About 18 were present for the Christmas dinner party Saturday night held by Nu Fu Club members and husbands at Les' Steak House. Afterward the group went to the home of Mrs. Harry Fisher where a gift exchange was held.

Patricia Stanard Is Engaged to D. Rees

Dr. and Mrs. J. S. Stanard, Aurora, announce the engagement of their daughter, Patricia Ann, to Daniel Rees, son of Mr. and Mrs. Everett Rees, Wayne.



Miss Stanard is a student at Lindenwood College for Women. Her fiancé attends the University of Nebraska. No wedding date has been set.

Shower in Winside Honors Connie Deck

A miscellaneous shower was held Sunday afternoon at St. Paul's Lutheran Church, Winside, to honor Connie Deck, who plans to be married Dec. 28 to Richard Behmer at St. Paul's.

About 65 guests from Winside, Howells, Norfolk and Hoskins were present. Red, pink and white, chosen colors of the bride-elect, were used in decorations. Games served for entertainment and Miss Deck was presented a corsage by the committee in charge. Mrs. Lester Deck and Mrs. Vernon Behmer poured.

Committee members were Mrs. Myron Deck, Mrs. Frank Weibie, Mrs. Gary Hart, Mrs. Ervin Jaeger, Mrs. Dallas Schellenberg, Mrs. Norman Deck, Mrs. Bill Brogren, Mrs. Robert Koll, Mrs. Wilmer Deck, Mrs. Arv Schellpeper and Mrs. Stanley Schellpeper.

Miss Deck is the daughter of Mr. and Mrs. Lester Deck, Winside.

Mrs. Wightman Hosts Fortnightly Meeting

Fortnightly Club met Dec. 9 with Mrs. Don Wightman. Guests were Mrs. Frank Morgan, Mrs. Leila Maynard and Mrs. Warren Shults and prizes were won by Mrs. John T. Bressler Jr. and Mrs. Shults.

January 13 meeting will be a no-host luncheon at Miller's tea room.

Plan Live Nativity

A live nativity scene is being held this week at Wakefield Covenant Church. Sunday evening it can be seen from 6 to 7 p.m.; Tuesday evening from 7 to 8 p.m. and Wednesday evening from 5:30 to 6:30 p.m.

WCS Open House Tea Is Held December 10

About 35 First United Methodist WCS members took part in the open house tea Dec. 10 at the church. Mrs. Al Morris accompanied the group singing of Christmas carols. Each circle furnished refreshments. Jan. 14 meeting will be a 1 p.m. luncheon.

Eight Take Part in Club Supper Meeting

Eight members of the Pth Club went to Norfolk Tuesday evening for a Christmas supper. No date has been set for the next meeting.

Thirteen at Minerva Club Luncheon Meet

Thirteen members of Minerva Club met for a 1 p.m. Christmas luncheon last Monday at Miller's tea room. Mrs. John Rice had the Christmas program. Mrs. L. F. Moses will be hostess to the Jan. 12 meeting at 2:30 p.m.

Coterie Luncheon Held

Coterie held their 1 p.m. no-host luncheon Monday at Miller's tea room. Mrs. Al Swan was a guest. Mrs. Ella Harrington will host the Jan. 5 meeting.

BIRTHS

Dec. 8: Mr. and Mrs. Craig Schultz, Allen, a son, Marty James, 8 lbs., Wakefield Hospital.

Dec. 9: Mr. and Mrs. Keith Noe, Lincoln, a daughter, 6 lbs., 8 oz. Grandparents are Mr. and Mrs. Oliver Noe and Mr. and Mrs. Ronald Allen. Great grandmother is Mrs. F. M. Noe.

Dec. 10: Mr. and Mrs. Robert Dohstman, Emerson, a son, Tony Robert, 8 lbs., 15 oz., Wakefield Hospital.

Dec. 11: Mr. and Mrs. Lester Kleinsang, Norfolk, a son, Lonnie Lee, 7 lbs. Grandparents are Mr. and Mrs. Leo Oetter, Norfolk and Mrs. Kathryn Rieck, Hoskins.

Dec. 13: Mr. and Mrs. Leonard Jacobsen, Laurel, a son, Larry David, 7 lbs., Wakefield Hospital.

Wayne Hospital Notes

Admitted: Mrs. Ronald Nelson, Laurel; Mrs. Roger Strand, Wayne; Mrs. Gordon Jorgensen, Wayne; Mable Hubbard, Belden; Dale Strivens, Dixon; Mary Wacker, Wayne; Ed Kirchner, Concord; Minnie Pierson, Wayne.

Dismissed: Mrs. Gordon Jorgensen, Wayne; Mrs. Roger Strand, Wayne; Mrs. Ronald Nelson, Laurel; Keith Ellis, Wayne; Mrs. Paul Oliver, Wayne; Fdwal Morris, Carroll; Roy Rasmussen, Laurel.

Don't be one of the "silent readers." If you disagree with our editorials, let us know about it.

Gag Theatre
WAYNE NEBR.

PHONE 375-1280

BACK BY POPULAR DEMAND

- Must End Saturday -
7:20 & 9:20 P.M.

THE GRADUATE
ANNE BANCROFT
DUSTIN HOFFMAN
KATHARINE ROSS

Starts SUNDAY

Don't complain about films. Support the good ones!

Rotate the page and read the rest... then SEE the film!

Matinee
2 P.M. SUNDAY NIGHTLY
7:20 & 9:20 P.M.

WATCH FOR OUR GALA NEW YEAR'S EVE CELEBRATION!

DON'T BE UP A TREE FOR

GIFT IDEAS

SOLVE YOUR HARD-TO-CHOOSE GIFTING AT OUR GIFT BAR

Troubled with names who seem to "have everything"? Try shopping our Gift Bar for novel yet useful gifts with an air of quality. It's the place to solve your gifting problems. Good selections available.

...still in doubt? Give a

GIFT CERTIFICATE

IN ANY AMOUNT YOU WISH - WE DO THE REST!

Swan-McLean Clothing
for men and boys

WAKEFIELD NEWS

Mrs. Robert Miner Jr. — Phone 287-2543

School Activities —

Thursday, Dec. 18
 Pep-Club Christmas party, 6:30 p.m.
 Friday, Dec. 19
 Elementary library story hours
 Volleyball with Lyons, here, 5:45 p.m.
 B-Team basketball with Lyons, here, 6:30 p.m.
 Varsity basketball with Lyons, here, 8 p.m.
 Saturday, Dec. 20
 B-Team basketball with Wahill, here, 6:30 p.m.
 Varsity basketball with Wahill, here, 8 p.m.
 Tuesday, Dec. 23
 K through sixth grade Christmas parties, 1:15 p.m.
 School closes for Christmas vacation, 2:30 p.m.

terian Church, 11 a.m.
 Monday, Dec. 22
 Boy Scouts, 7:30 p.m.
 Wednesday, Dec. 24
 Christmas Eve service, Covenant and Salem Lutheran churches, 11 p.m.

Hold Christmas Supper
 Friendly Tuesday Club held their annual Christmas supper Friday evening at the Cornhusker Cafe with 22 present. Families were guests. Christmas carols served as entertainment. January 27 meeting will be with Mrs. Bryon Johnson.

Present Program
 Covenant Church choir presented a pantomime and musical program on the birth of Christ, "What's It All About," Sunday evening. Candess Jensen was in charge and Ronnie Larson accompanied.

Attend Morningside Production
 Saturday night Wakefield National Honor Society members accompanied by Mr. and Mrs. Alvin Sundell, attended Morningside College Theater's presentation of Euripides' "Medea."

FHA Carols
 Wakefield FHA members met Dec. 9 to carol at Shady Rest Lodge, the hospital and Pleasant Manor. Barbara Brownell led songs. Lunch was served by Barbara Luhr and Suelen Sundell after caroling.

Devotions were given by Susan Gustafson and "Teen Talk" by Judy Schroeder. Gave Victor conducted several Christmas games following the business meeting.

Go Caroling.
 Young At Hearts Club met Monday evening in the Roger Bostwick home to go Christmas caroling. Eleven members with husbands and guests took part. Mrs. Bostwick awarded game prizes. The 1969 executive com-



GIFTS FOR OTHER CHILDREN. George Macklin from the Nebraska Children's Home in Omaha met with Cub Scout Pack 221 Tuesday night at St. Paul's Lutheran Church where he was a participant in their monthly program. Representing the four dens in the pack making a presentation of food gifts to the NCH are, from left to right with parent's name in parenthesis, Craig Clatanoff (Duane), John Lefstad (Dana), Clint Nelson (Gordon) and Bryan Park (Loren). The fresh fruit and canned goods are being shared with the home by Pack 221 members as a Christmas project.

mittee served hot dogs and hot chocolate. January 19 meeting will be with Mrs. Dallas Roberts who will give a demonstration on lamps.

Girls Meet to Carol
 Twenty-two Pioneer girls met Monday evening at the Covenant Church to go Christmas caroling. They visited the hospital, Shady Rest Lodge and private homes, returning to the church at 8:30 to meet with prayer pals.

Girls presented their prayer pals with Christmas candles they had made. Games were played and Mrs. John Viken led in prayer. Committee members, Mrs. Dennis Carlson, Mrs. Gordon Lundin and Mrs. Chalmers Simpson served cookies, coffee and hot chocolate. Next regular meet-

ing will be Jan. 5 at 4 p.m.

Scouts Meet Friday
 Den I Cub Scouts of Pack 172 met Friday after school with the den mothers, Mrs. Paul Byers and Mrs. William Vost, at the Scout Room. The boys made Christmas decorations from egg cartons. Next meeting will be Dec. 19.

Den III Meets
 Den III Cub Scouts of Pack 172 met Monday after school in the Cub Scout Room with five present. Den mother Mrs. Robert Miner Jr. furnished treats. The boys made door decorations from pine cones. Next meeting will be Jan. 5.

Go Christmas Caroling
 Thirty-two members of the junior choir and their leaders from Salem Lutheran Church met Sunday afternoon to go Christmas caroling. The group visited Wakefield Hospital, Shady Rest Lodge and private homes, returning to the church for a tavern supper. Mothers serving were Mrs. Dan Gardner, chairman, Mrs. Dick Utecht, Mrs. Merlyn Holm and Mrs. Dyan Dahlgren.

Games served for entertainment and the choir presented their director, Mrs. Robert Harding, a poinsettia and their accompanist, Mrs. Alden Johnson, a table decoration.

Have Cooperative Supper
 About 40 people attended a cooperative supper Monday at Wakefield Elementary School. Hosts were the cooks, Mrs. Kenneth Baker, Mrs. Tom Harrison, Mrs. Wilbur Utecht and Mrs. Emma Fredrickson. Guests with their families were the custodians, bus supervisors, office staff, superintendent, and Mrs. Muri Beller and family, elementary principal and Mrs. Derwin Hartman and high school principal William Schoor.

Games were played with Mrs. Dick Utecht and Mrs. Robert Harding in charge. An exchange of gifts was held.

Meet Monday
 Town and Country Club met Monday evening in the Lawrence Johnson home with ten members. Mrs. H. L. Eaton was co-hostess. Games were played for entertainment and a gift exchange was held. Lunch was served.

Scouts Meet
 About 15 Boy Scouts from Troop 172 met Monday evening at the Scout Room to make plans for the holiday. The Board of Review will be Dec. 22 at 7:30 p.m.

Churches —

United Presbyterian Church (James B. Marlett, pastor)
 Thursday, Dec. 18: Esther Circle, 9 a.m.; Sunday school program and choir, 7 p.m.
 Sunday, Dec. 21: Sunday school, 9:45 a.m.; worship and Sunday school Christmas program, 11.

First Christian Church (John Epperson, pastor)
 Thursday, Dec. 18: Friendly Folk Fellowship, 7 p.m.
 Saturday, Dec. 20: Children's program practice, 9:30 a.m.
 Sunday, Dec. 21: Bible school, 9:45 a.m.; church school, 9:30 a.m.

Salem Lutheran Church (Robert V. Johnson, pastor)
 Thursday, Dec. 18: Junior choir, 4 p.m.; Grades four-eight, 7 p.m.; senior choir, 8.
 Saturday, Dec. 20: Confirmation classes practice Pre-K-third grade, 9:30 a.m.
 Sunday, Dec. 21: Worship, 8:30 a.m.; church school, 9:35; chil-

dren's services, 11; Youth and senior choir, 7:30 p.m.
 Wednesday, Dec. 24: Christmas Eve services, 11 p.m.

Evangelical Covenant Church (Fred Jansson, pastor)
 Thursday, Dec. 18: Junior choir rehearsal, 4 p.m.; Hi-League, 8.
 Friday, Dec. 19: Mary Martha, church, 2:30 p.m.

Saturday, Dec. 20: Confirmation class, 9 a.m.; Sunday school program practice, 10.
 Sunday, Dec. 21: Sunday school, 10 a.m.; worship, 11; Sunday school Christmas program, 7 p.m.
 Wednesday, Dec. 24: Christmas service, 11 p.m.

St. John's Lutheran Church (K. J. Wentzel, vacancy pastor)
 Thursday, Dec. 18: Bible study group covered 8:15 luncheon, 1 p.m.; L.L.S.
 Saturday, Dec. 20: School and confirmation, 9 to 11 a.m.
 Sunday, Dec. 21: Sunday school and Bible class, 9:30 a.m.; worship, 10:30; Christmas practice, 2 to 4 p.m.; Walther League Christmas party, 6:30.

Eighteen relatives were in the Mrs. Ruth Killion home Saturday evening to observe Paul Killion's 30th birthday. Out-of-town guests were Mr. and Mrs. Duane Wilcox and family, Kennard, were also dinner guests Sunday at Paul Killion.
 Veggie Holtorf and William Holtorf visited last week in the Mrs. Elmer Rinderhagen home, Truman, Minn.

Ak-Sar-Ben —

(Continued from page 1)
 men, formerly was president of the Student Union Board and of Terrace Hall, currently is an ex officio member of the Student Senate and the Union Board, member of the W Club, the Young Democrats, and Circle K, a college affiliate of Kiwanis.
 He graduated from Rock County High School in 1966 and is the son of Mr. and Mrs. Glenn Butler.
 Miss Ritter is a junior major-



Merlyn Habrock

ing in mathematics and minor-ing in Spanish, with a grade-point average of 3.82 — close to straight A's. At Omaha South High School, where she graduated in 1967, she ranked tenth in a class of 788.
 She is a member of Kappa Mu Epsilon, national honorary in mathematics, and of Wayne Student Education Association of Nebraska, and is active in women's intramurals. Daughter of Mr. and Mrs. E. M. Ritter, she plans to teach mathematics in high school, also hopes to become a counselor.
 Miss Zach is a senior major-ing in elementary education and minor-ing in English, with plans to teach elementary school and later to study for a master's

degree in guidance. She is a member of Kappa Delta Pi, national honorary in education, WSEAN, and Newman Club.
 A 1967 graduate of St. Francis Central High School, she is the daughter of Mr. and Mrs. Stanley Zach.

WS Graduation —

(Continued from page 1)
 gress, two for master's degrees. Graduates from the Wayne area:

Bachelor of Arts in Education
 Gary Anderson, Rita Harder, Ruth Baler Kardell, Donald Peterson, Doreen Blamont Steffen, all of Wayne; Paul Sincle, formerly of Wayne, now of Juneau, Alaska; Gilbert Bermeil, Dixon; Edith Cook, Carroll; Phyllis Hanson Dirks, Concord; June Kubik Hawk, Emerson; Cheryl Heers, Pilger; Eldred Lausch, Pierce; Mildred Otter, Pender.

Bachelor of Fine Arts in Education—Joyce Pilsack Sokol, Pender.

Bachelor of Science in Education—Donald Koebber, Wayne; Randall Benson and Janet Preston Crippen, both of Wakefield.

Bachelor of Science—Richard Bornhoft, Wayne; Larry Behnke, Pierce; Robert Jordan, Carroll; Carol Bastedo, Allen.

Master of Science in Education—Neil Burnham and Jean Eynon, both of Wayne.

If you took the time to read this, think of the many people who will read your small classified advertisement. They'll read and you'll get results.

Theis-Wilcoxson Wedding Is Held In Wisner Sunday

The marriage Saturday afternoon of Catherine Theis, Wisner, and Dale Wilcoxson, a former Wayne State student, was solemnized at St. Paul's Lutheran Church, Wisner. Parents of the couple are Mr. and Mrs. Alvin Theis, Wisner, and Mr. and Mrs. Wayne Wilcoxson, Fremont.

The Rev. Lester Hedemann officiated at the double ring rites and Harland Raesch sang "The Lord's Prayer" and "More," accompanied by Pat Gersib at the organ. Candles were lighted by Dale Theis, Wisner, and Dwayne Theis, Winside.

Given in marriage by her father, the bride appeared in an A-line gown of white velvet with daisy accents on the ruffled collar and cuffs and on the removable train. Her headpiece was of Venice lace daisies and she carried orchids.

Maid of honor was Linda Aired, Omaha, and bridesmaids were the bride's sister, Susan Theis, Wisner; Virginia Hamann, Battle Creek, Iowa, and Terri Christensen, Fremont. They wore A-line empress gowns in royal blue with silver shoes and carried white muffs.

Best man was Wayne C. Wilcoxson, Columbus, and groomsmen were Gary Theis, Lincoln, and Dave Kucera, Fremont. The

men wore blue double breasted tuxedos.
 For her daughter's wedding Mrs. Theis chose a royal blue knit with lace yoke and sleeves. Mrs. Wilcoxson wore a navy blue knit.

Mr. and Mrs. Keith Raemusson, Wisner, served as hosts to the reception for 250 at Wisner City Auditorium. Pam Utterback, Millard, registered guests and Marlon Geewe and Twink Rushton arranged gifts. Mrs. Herman Heller and Mrs. Kenneth Utterback cut the cake and Mrs. Dallas Worrell and Mrs. Wayne C. Wilcoxson poured. Carol Eggers served punch.

Waitresses were Diane Larsen, Marj Rubecok, Velma Renner, Marlon Wascher, Gayle Martin and Eva Toelle. Women serving were Mrs. Waldon Tonjes and Mrs. Albert Kander. In the kitchen were Mrs. Dean Tague, Mrs. Art Rabe, Mrs. Darold Krueger, Mrs. Harvey Sporing, Mrs. LaVern Stigge and Mrs. Ronald Jacobsen.

The bride, a Beemer High School graduate, is a senior at Midland College and is employed at Dodge County Hospital laboratory. The bridegroom was graduated from Fremont High School in 1967 and attended Wayne State College two years. He is presently attending Midland College.

Following a Chicago wedding trip the couple will reside in Westlake Trailer Court, Fremont.

The Wayne Herald gives you better coverage of area sports.

BEN FRANKLIN

WISH THEM A MUSICAL CHRISTMAS

MAGNUS ELECTRIC CHORD ORGAN

Fun For Everyone

39⁹⁵

Walnut Cabinet **DELUXE ORGAN** **59⁹⁵**

Four chord tone with 12 chord buttons & 37 treble keys

EVERYONE WOULD ENJOY A RADIO FOR CHRISTMAS

AM/FM TABLE RADIO Reg. \$35.95 Antique white cabinet. Solid state. Reg. 29.95	PORTABLE AM RADIO Reg. \$19.95 Battery & AC use with strap. Battery power.	WALKIE TALKIE Morse Code Reg. \$24.95 Pocket size. Battery powered. Multi band tuning. 13⁹⁵ Pair Send secret voice messages or Morse Code 5 1/2-in. high
AM CLOCK RADIO 8-inch beige cabinet. Solid state. 11⁹⁵		

SMALL APPLIANCES

7-Pc. COOKWARE SET Heavy Duty Teflon Interior 1-qt & 2-qt covered pans, 5-qt dutch oven, cover fits 10 1/2-in. skillet. 10⁹⁶	Electric Knife 10.99 Stainless steel blades. List 11.46	HAND MIXER 9.88 Thumb tip control, mixing beat and beater ejector.	2-Slice Toaster 12⁸⁸ Dial shade! With snap-down, easy clean crumb tray.
--	---	---	---

BEN FRANKLIN

Wayne, Nebr.

McDonald's

PRICE BREAKTHROUGH

MEN'S ALL WEATHER COATS

Famous BORG linings
 KORATRON® finish

REGULAR PRICE **\$45**

NOW! 23⁹⁹

Coats with real deluxe features! Made in U.S. Remove zip-out lining and they're machine washable.

Solid colors, checks in single and double breasted models. Regulars only, 36 to 44.

OPEN SUNDAY, DECEMBER 21 from 1 to 5 p.m.

WE GIVE and now at most McDonald stores!

YOUR PERSONAL CREDIT CARD **WE HONOR master charge**

your BANKAMERICARD **welcome here**

Just say: "CHARGE IT"

DIXON NEWS

Mrs. Dudley Blatchford - Phone 584-2588

Sunshine Club Meets
Sunshine Club met Wednesday afternoon with Mrs. Gerole Kavanaugh for a Christmas party. Ten members and guests, Mrs. Ralph Whitehorn and daughters, were present. The afternoon was spent visiting and with a gift exchange. Mrs. Freddie Mattes will be the hostess Jan. 21.

Attend Dedication
Those from Concord Camp attending the dedication of the Gideon Bible at Marina Inn, South Sioux City Sunday afternoon were Melvin Manzes, Earl Petersons, Clarence Dahlquist, Kenneth Olsons, Tom Parks, Marvin Hartmans, Glen Ritterbusch and Mr. Paulsen, South Sioux City. Herb Nieman was a visitor.

WSSC Meets
Dixon Women's Society of Christian Service met Thursday at the church. Lesson leader was Mrs. Ronald Ankeny, assisted by Mrs. Leroy Penlerick. Plans

were made to meet Wednesday to pack Christmas boxes and to have a lunch stand at the Roy Pearson sale Jan. 5. Cooperative luncheon was served with Mrs. Dick Chambers and Mrs. Earl Eckert, hostesses.

Trim Tree
Senior Methodist Youth Fellowship met at the church Sunday evening to trim the Christmas tree. Linda Young served lunch.

Guests gathered Saturday evening in the Emmett Roberts home for their 25th wedding anniversary.

Mr. and Mrs. Earl Peterson and Mr. and Mrs. Aubrey Rickett and Martin were guests in the Dean Rickett home Tuesday evening to observe Karla's fourth birthday.

Sheryl and Machel Noe, Lincoln, are spending several days with their grandparents, Mr. and Mrs. Oliver Noe.
Mrs. William Schutte left

Wednesday to visit her mother and other relatives in Columbia, S. C.

Sp/4 Ronald Peters was a guest in the Raymond Durant home Tuesday and a dinner guest in the George Eickhoff home Wednesday.

Churches -

St. Anne's Catholic Church (Anthony M. Milone, pastor)
Saturday, Dec. 20: Grade school catechism, 9 a.m.; confessions, 8-8:30 p.m.
Sunday, Dec. 21: Mass, 8 a.m.

Dixon United Methodist Church (C. R. Anderson, pastor)
Sunday, Dec. 21: Worship, 9:30 a.m.; Sunday school, 10:30; Christmas program, 6 p.m.

Logan Center United Methodist Church (C. R. Anderson, pastor)
Thursday, Dec. 18: WSSC Christmas party, 2 p.m.; Bible study and prayer service, 7:30 p.m.
Saturday, Dec. 20: Christmas program practice, 9-11:30 a.m.
Sunday, Dec. 21: Sunday school, 10 a.m.; worship, 11; Christmas program, 7:30 p.m.

Allen Chorus Ready For Holiday Cantata

The Allen Community Chorus, under the direction of the Rev. John Erlanson, will present the cantata "Born A King" by John Petersen Monday evening at eight o'clock in the high school auditorium.

Soloists for the evening will be Mrs. Larry Koester, Mrs. Harold Isom and Herbert Ellis. Dave Koester will accompany the choir on the piano and Jeanne Durant will accompany on the organ. The Rev. J. B. Choate will give the narration during the cantata.

The group held a dress rehearsal for the presentation Wednesday evening.

Winners at Concord

Lucky winners Saturday afternoon in the Concord Commercial Club holiday turkey drawing were Mrs. George Anderson, Mrs. Jim Nelson, Hans Johnson, Jean Evelyn and Martha Reith. The Women's Welfare Club held a bake sale in the firehall during the afternoon. Coffee and plure were served.

Christmas Party for Children

A child's laughter is much a part of Christmas gaiety and 590 youths raised their voices Saturday at the city auditorium in laughter, singing and general merriment. A giant Christmas party was held for the area youngsters with members of Tau Kappa Epsilon, the Order of Diana and Kappa Delta Gamma making the arrangements.

"I don't know who is having more fun, the little kids or the big kids," observed Claudia Thomas, president of the Kappa Delta Gamma sorority, in the midst of the five-hour affair.

The 90 sorority and fraternity men organizing and sponsoring the children's party were all in costume representing children's story book characters. Rabbits, elves, worms, Robin Hood, Jack Frost and Santa were only some of the characters present to greet the 49 dozen youngsters upon their arrival.

As each of the children arrived, a college student made a name tag with a number for him and put another name-number tag on his coat. This system kept ownership of winter garments untangled and when the party was all over, not a coat was left over and no one lost any apparel.

The party started at 10 a.m. with games of every size and sort, however the day started at 7 a.m. for party sponsors. Collegians began decorating the city auditorium at that hour since they could not decorate the previous evening due to boxing matches. After the party was over the fraternity men and sorority women had to remove all of the games, booths and party materials by four o'clock Saturday because of a scheduled Wayne High School basketball game later in the evening.

With colorful decorations all set and all the sponsors in costume, the 590 youths poured through the doors and the rafters commenced ringing with Christmas fun as only a child can know it. There were games such as ring toss, bowling, darts, bean bag game, and an art contest. Mexican pinatas, huge containers of various candies, were broken and this activity turned out to be the most popular of all.

The sponsoring organizations had planned a party of their own after the children's party, but the 90 collegians were so worn out they parted for only half an hour and went home to rest. They had made 12 pinatas full of candy and intended to save six for their party. However, the youngsters went so ecstatic over

the pinatas that the college students used all 12. "Anyway," said one, "We wouldn't have had the strength to break a pinata."

Besides the games, children were treated to a movie, hot dogs, and two collage skits entitled "A Joke on Santa" and "Twas the Night Before Christmas". For the younger set there were Christmas stories read in the Woman's Club room and they participated in playing different roles in the stories.

Members of Tau Kappa Epsilon, the Order of Diana and Kappa Delta Gamma would like to thank all who contributed to the event. They especially want to thank the women who worked in the kitchen. These ladies were Mrs. Larry Skolan, Mrs. Alfred Koplin, Mrs. Merlin Saul, Mrs. Merlyn Reinhardt, Mrs. Carroll Barnes and Mrs. Andy Manes.

Allan Inzerello, president of Tau Kappa Epsilon, said, "Since it went so well, the men of TKE may decide to make the party an annual affair."

Donations from the following merchants helped make the party a success: Andy's Pizza, Midwest Buyers Group, Brandstetter Implement Co., Casey Music Co., Swanson TV, Nu Tavern, McNatt Hardware, Gem Cafe, Tiedtke Appliance, Johnson Bakery, Dr. Wessel, Dr. Shupe, Dr. Hillier, Wortman Auto, McDonald's, Dr. Liska, Pepsi Cola, The Igloo, Carhart Lumber Co., M & S Oil Co., McDermott & McDermott, Bentack Clinic, Beulah's Beauty Shop, Ron's Cafe, First National Bank, Wayne Federal Savings and Loan and Carl's Conoco.

Also contributing were Coan's Dairy Sweet, Elm Motel, Otto Construction Co., Wayne Sporting Goods, Dr. Koerber, Robert Morris of Kraft Foods, Barner's TV, Al Koplin, B. A. Meyer, Esther Hagerbrock, Bell Telephone Co., Ben Franklin Store, Ben's Paint Store, Bill's Cafe, Chamber of Commerce, Claude's Standard Service, Cleone's Beauty Shop, Coast-to-Coast Store, Dale's Jewelry, Dick's Tavern, Doescher Appliance and Don's Shoes.

Others making contributions were Don's Drive Inn, Felbers Pharmacy, Gamble Store, Grless Rexall, Hazel's Beauty Shop, Herb's Buick, Johnson Frozen Foods, King Carpet Store, Koplin Auto, Larson-Florine, Les' Steak House, Little Hill's, Lyman Photography, L.I. Duffer, Mert's Econ-O-Way, Mine's Jewelry, Pat's Beauty Salon, Sears, State National Bank, Super Valu, Swan's, Lazy Leo Printing, Wayne Book Store, Willse Mortuary, Safeway and The Wayne Herald.

Give Happiness with Your GIFTS

Gifts that are a pleasure to give, a treasure to receive — are at SAV-MOR'S... all priced to lower your cost of giving. Bring your list with you today — and choose perfect presents to make this the Happiest Christmas for everyone.

BE A Sweet SANTA

PANGBURN'S Western Style CHOCOLATES

KODAK INSTAMATIC CAMERA OUTFITS \$19.95 (Value \$21.95)

FREE GIFT WRAPPING

Say "Merry-Christmas" in the sweetest kind of way with Pangburn's Milk and Honey Chocolates. A wide selection of beautiful Christmas chocolates awaits you.

CLAIROL KINDNESS HAIR SETTER \$19.95 (Value \$29.95)

Remington Shaver Electro Blade 6 \$26.95 (Value \$34.95)

With FREE Replacement Blades

PORTABLE PROFESSIONAL HAIR DRYER SUNBEAM \$21.95 (Value \$29.95)

EAU DE LOVE \$3.75

Over-Size Hood Fits Over the Largest Curlers

LIGHT, YET STIRRING

MY SIN Perfume by Lanvin \$6.00

Tabu Spray Cologne by DANA \$3.50

Refillable Spray

ALSO GIFT SETS

JADE EAST GIFT SET \$5.00

ENGLISH LEATHER \$2.50

Jet Setter Traveler

All-Purpose or New Timberlane After-Shave

PRINCE & PRINCESS GARDNER LARGE SELECTION of Billfolds - Key Cases - FRENCH PURSES and SETS

SAV-MOR DRUG

Walgreen Drug

1022 MAIN PHONE 375-1444

STORE HOURS: Monday-Friday 8:00-8:30, Saturday 8:00-6:00, Sunday 10:00-1:00 p.m.

Director -

(Continued from page 1)

president of the state treasurer's association during the meeting after serving a one-year term.

As part of her duties while serving as president of the Nebraska Welfare Directors' Association, Mrs. Martelle, with the help of an executive committee, appoint members to the legislative, courtesy and nominating committees serving the association.

Her term of office will be for one year. The purpose and function of the association is to coordinate and exchange ideas, practices and policies of county welfare directors; to cooperate with the state department of public welfare in the study of present administrative policies and in creating new policies.

Mrs. Martelle has been the welfare director in Wayne County for the past 10 years. Her office is located on the lower floor of the Wayne County Courthouse.

Winside Schools Present Program

The 1969 Christmas concert of the Winside Public School was held Friday at 7:30 p.m. in the city auditorium with a large crowd in attendance.

"Christmas Around the World" was the program theme under the direction of Mrs. Fletcher, music instructor. Steph Carlson was narrator.

Grades and countries they represented were as follows: Kindergarten and first grade—United States—sang "Santa Claus Is Coming to Town"; second grade—Ireland—"Oh, Hang Up the Holly"; second and third grade combination—France—"Il Est Ne"; third grade—Italy—"Carol of the Bells"; fourth grade—Germany—"O Tannenbaum" and "Come, Shepherds Rise."

The fifth grade—England—sang "Deck The Halls," and sixth grade—Mexico—"La Pinanta." Donna Krueger accompanied each of the presentations on the piano.

A junior high chorus sang "Go Tell It on the Mountain" and "Silent Night" accompanied by Debra Bargstadt.

The junior high band played

selections under the direction of instructor Schlueter. Girls' Glee Club, accompanied by Jane Witt, and the Boys' Glee Club, accompanied by Shelley Glass, both presented vocal numbers.

A mixed chorus, accompanied by Donna Krueger, sang "Lay Down Your Staffs," "Guiding Star Carol" and "God Rest You, Merry Gentlemen."

Petitions -

(Continued from page 1)

is in violation in that it allows county school superintendents to certify a requested tax levy which is in excess of the secondary needs of the individual school districts; and that this tax levy is then assessed against the property owners of the non-high school districts of the individual counties. Plaintiffs allege that the result of LB 190 is to tax one class of citizens which tax will be later used for the benefit of citizens outside the taxing district.

Those appealing also claim the result of LB 190 is to deny the tax paying citizens in a non-high school district the equal protection of law as well as it produced a lack of uniformity in the tax burden of taxpayers similarly situated.

The most recent action in the case was the filing of a plea by

Plan Your NEW YEAR'S EVE PARTY

With Us, We'll have all the trimmings. Reservations Only \$3.00 Per Couple

Geno's El Rancho Phone 396-9409 Pilger, or 375-3679 Wayne

Cine THEATRE

One Show Nightly at 7:30 p.m. Adm.: Adults \$1.25, Children 50c

December 18-20 "AFRICAN SAFARI"

December 21-23 "THE MALTESE BIPPY"

Presented by The Famous Players Production

ROWAN MARTIN "THE MALTESE BIPPY"

Larson's DEPARTMENT STORE

Ho! Ho! Ho!

Bag Full of LAUGHS

Give a fun gift... "Bag of Laughs"

A deep roaring laugh, that will make any holiday party a big "laughing success." Battery operated \$2.98 (not included).

— Main Floor —



TWO LAUREL BEARS double team Dick Tietgen under the basket as he passes to Randy Helgren for an easy two points. Laurel players from the left are Steve Erwin, George Schroeder, Steve Smith and Rod Erwin.

kamp with seven and Helgren and Ellis with five each.

Helgren and Armbruster led the Blue Devils Tuesday night against the Laurel Bears with 13 and 12 points. They were followed by Tietgen with seven, M. Biltoff and Terry Ellis with five, Sutherland with two and Echtenkamp with one.

The Blue Devil reserves bit the dust for the first time this year as Papillon handed them a 78-52 thumping. Tuesday night they bounced back as they humbled the Laurel reserves, 44-28.

In Saturday's game the score was knotted 16-all after one quarter and 30-26 at half time. Papillon upped their lead to 15 as they led 58-43 through three periods and 73-66 after four quarters as the Blue Devil yearlings played to a storming finish.

Kyle Willis led all scorers Saturday with 18 points. He was followed by Rod Cook with 14, Steve Peterson 12, Lonnie Biltoff 11, Breck Giese five and Craig Johnson and Mike Creighton with three.

Wayne's reserves never trailed in their Tuesday night encounter with the Laurel reserves. Wayne led 10-6 after one quarter, 24-11 at intermission, 31-20 through three stanzas. The final score: 44-28.

The yearlings balanced attack was led by Rod Cook with 10 points. Supporting his role were Mike Creighton, Steve Berning and Don Mau with seven, Breck Giese with five, Kyle Willis and Todd Bornhoft with three and Lonnie Biltoff with two.

Willis grabbed 14 rebounds for the yearlings while Cook pulled down seven.

Wayne's next game is Friday night as the Plainview Pirates invade Wayne for a game scheduled for the city auditorium.

Pender Clips Allen, 53-45

Pender outscored the Allen Eagles in every quarter except the final one to hand the Eagles their third defeat of the season, a 54-45 setback Saturday night on the Allen court.

Allen, although down 47 to 26 after three periods of action, fought back to score 19 points to Pender's six in the final canto. Leading that scoring as they had during the whole evening were Dennis Geiger and Loren Reuter. Geiger, a 6-2 senior, pumped in 13 points; Reuter, a 5-8 junior,

Allen	7	8	11	19	45
Pender	15	10	22	6	53

added 11. No other Eagles hit in double figures. And that lack of another player to take some of the scoring pressure off those two cagers is one of the things that beat the Allen quintet, according to Coach Claire Jordan. "We only needed one or two players to start hitting in the contest," he noted, "and the outcome would have been much different. But we couldn't buy a goal, especially in the first half."

Jordan, in his first year at Allen, pointed to a successful press as the key to that fourth quarter scoring surge.

The Pender boys also had their difficulties in getting a balanced scoring attack in gear in the contest. Two of them hit in two figures: Tom Brazee with 17 and Kevin Tonjes with 12.

The Eagles will see more action Friday night when they host Newcastle. That squad boasts a 6-5 cager which the Eagles will have to hold down if they hope to gain that second win of the season. Dec. 29-30 they take part in the Wakefield Holiday Tournament.

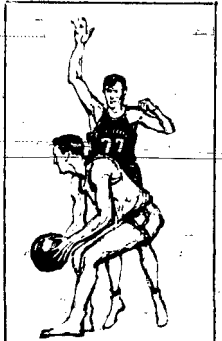
Tuesday night's scoring for the

WAYNE	FG	FT	PF	TP
Randy Helgren	2	6-8	3	10
Rod Cook	0	1-4	0	0
Mike Creighton	0	2-3	2	2
Mike Biltoff	2	2-3	0	6
Les Echtenkamp	0	1-1	4	1
Terry Ellis	2	2	0	4
Breck Giese	0	4-6	3	4
Todd Bornhoft	0	0	1	0
Ted Armbruster	3	5-5	4	11
Dick Tietgen	1	4-5	4	6
Lonnie Biltoff	2	0-2	1	4
Dan Sutherland	2	0-1	2	4
Kyle Willis	0	0-1	1	0
TOTALS	14	24-35	29	52

PAPILLION	FG	FT	PF	TP
Nix	6	3-5	4	15
Eymann	2	0	3	4
Knott	3	0-1	0	6
Fey	1	2-4	2	4
Kelly	5	8-10	0	18
MacNaughton	0	0	1	0
Fleming	0	4-5	0	4
DeBoer	2	1-6	5	5
Trochil	0	1-3	2	1
Dort	6	3-5	4	15
Van Gilder	2	0-1	4	4
Lusero	1	0	0	2
TOTALS	28	22-40	25	78

WAYNE	FG	FT	PF	TP
Randy Helgren	2	9-13	5	13
Rod Cook	0	0	1	0
Mike Biltoff	2	1-2	1	5
Les Echtenkamp	0	1-1	5	1
Terry Ellis	2	1-3	0	5
Ted Armbruster	6	0-1	5	12
Dick Tietgen	2	3-6	3	7
Dan Sutherland	1	0	2	2
TOTALS	15	15-26	20	45

LAUREL	FG	FT	PF	TP
Steve Erwin	4	5-5	4	13
George Schroeder	7	8-12	1	22
Rod Erwin	5	3-6	3	13
Paul McCoy	0	2-2	2	2
Steve Smith	3	0	2	6
Jim Schroeder	3	1-2	5	7
Jerry Sarba	0	1-2	0	1
TOTALS	22	20-29	17	64



Coming Games

-Friday: Plainview at Wayne, Newcastle at Allen, Laurel at Coleridge, Lyons at Wakefield.
-Saturday: Wakefield at Walthill.
-Tuesday: Stanton at Laurel.

College Quint Starts Uphill Course Friday

The road is uphill for Wayne State's basketball team from now on. And the Wildcats meet the first obstacle Friday night—the Wolves of Northern State (S. D.).

Northern never ease for Wayne, recently downed South Dakota University, a pre-season favorite to win the North Central Conference crown.

Game time will be 7:30 in Wayne's Rice Gym, following a 5:30 clash between similar varsities of Wayne and Northern.

The senior Wildcats have a 7-1 record going into the game while the juniors are 3-1, after their first defeat since year before last. The Creighton University freshmen accomplished that feat last Saturday, 70-61, but had to stall off a late surge by the Wayne JV. At times the gap was five points. Several late field goals by Wayne High graduate Gordie Jorgensen kept the Creighton frosh worried.

Wayne's varsity, led by the 20 points of Dave Schmeller, whipped Westmar, 73-58, Saturday. The first four minutes produced quick changes of lead until Wayne—as the fans are accustomed to expect—suddenly zipped to 19-9.

Eagles was also helped by Bob Mitchell's six points, Brian Ina-felter's six and Mike Ellis' five. Gary Troth and John Warner added two each.

Allen only managed to hit on 24 per cent of their field goal attempts. At the free throw line they hit just a shade better than the visitors, 17 of 28 compared to 17 of 35.

Leading rebounder for the hosts was Dennis Geiger with 12. Helping out Brazee and Tonjes with scoring for Pender were Pete Faebel with seven, Keith Moeller with five and Keith Shademan and Jim Novak with four each. Tom Weddingfeld and Blayne Glesman had two each.

In the reserve game, Allen came through with a 37-36 overtime win over the visitors.

The Eagles, paced by John Warner and Gary Troth with 12 points each, fought to a 31-31 tie at the end of regulation play, then pumped in six points while limiting Pender to five in the overtime. Mark Trimble led the losers with 10 points.

Papillion, Laurel Storm Past Wayne; Blue Devil Season Mark Drops to 0-4

By Kieth Tietgen

Coach Dick Nelson's Blue Devils had their season record dip to 0-4 for the season as they suffered two more set-backs: A Saturday loss to Papillion, 78-52, and a Tuesday loss to Laurel, 64-45. Both were home games.

In an effort to jam up Laurel's fast moving, high scoring offense Coach Nelson had his team employ a more-deliberate style of play, taking only the high percentage shots throughout the contest. Laurel counteracted this by using a full court press on the Blue Devils.

Wayne's efforts in the first quarter were successful as they held the Bears to only 13 points while scoring eight themselves, but the second stanza was disastrous for Wayne as they hit just under 2 per cent of their shots

From the field, 1 of 15.

At this point two big factors kept Wayne in the contest—hitting seven of nine charity tosses and holding Laurel's two big guns, Steve Erwin and George Schroeder, to only two points. The Bears maintained an 11 point lead at intermission, 28-17, over the cool Blue Devils.

The second half saw the Blue Devils outshoot the Bears from the field, 11 to 10, but Wayne

could only manage to connect on six of 11 free throw attempts while Laurel completed 16 of 22. That success at the gift line helped the Bears preserve their lead and the victory over Wayne's

Blue Devils.

Aside from the fact that this was Wayne's fourth loss of the season, it had to be their best game thus far. Coach Nelson felt that the only way to bottle up Laurel's potent offensive attack was to slow down the game to the speed he felt players could be most effective.

Coach Nelson said if his players could have hit around two-thirds of the shots they attempted in the second canto, compared to the one of 15 they hit, it could have been a much closer game at intermission. The main thing for Wayne is to iron out their rough spots, mainly in ball handling and keeping their fouls down, according to Coach Nelson.

In the contest with Papillion Saturday night the Blue Devils trailed 21-12 after one canto, 47-25 at intermission, 66-41 through three periods of play.

Against Papillion Ted Armbruster and Randy Helgren hit 11 and 10 points. They were followed by Mike Biltoff and Dick Tietgen with six; Terry Ellis, Breck Giese, Lonnie Biltoff and Dan Sutherland with four; Mike Creighton with two, and Les Echtenkamp with one.

In the contest with Laurel Tuesday night Tietgen pulled down 13 rebounds to Steve Erwin's 18 for high honors on both teams. Tietgen received plenty of help from Armbruster with eight, Echten-

Jerry Luedtke Repeat Winner of MVP Award

For the second time, Jerry Luedtke of Omaha has the honor of most valuable player on the Wayne State College football team. Coach Del Stoltenberg also announced Tuesday the most valuable defensive player award to Mike Wynn, a sophomore guard from Grand Island.

Team members voted on the most-valuable honors and also elected three co-captains for 1970: Luedtke, Jon Roberts, a junior end from Lincoln, and Sam Singleton, junior tailback from Elizabeth, N. J.

Stoltenberg announced two other awards—to Roberts as most improved lineman and to Chuck Lellos of Chicago as most valuable lineman. Roberts, a line-backer in two previous years, switched to the tight end spot this fall and gained a starting assignment. As a prepster at Lincoln Southeast, Roberts was an honorable mention all-stater. Lellos, a graduate of Chicago Pennington High, also switched from defense to bolster the offensive line at tackle and is credited with a major role in sparking Wayne's surge to five wins and a tie after three losses.

Luedtke, a junior fullback and product of Omaha North High, earned the most valuable citation two years ago as a halfback.

WS Coaches Praise Wrestlers, Swimmers

After NMS Events

Wayne State wrestling and swimming coaches spread considerable praise on their teams this week after second-place finishes at Northwest Missouri State College, Maryville.

The wrestlers came in a close second Saturday with 83 points, behind host Northwest Missouri, 88, in an eight-team invitational which Coach Don Pate said was loaded with talent.

Two Wildcats won individual titles—John Kletnick, sophomore from Park Forest, Ill., at 167 pounds, and Ken Monroe, freshman from Rosemont, Ill., who moved up from his usual 167-pound class to 190.

Three others brought back second places—Max Branum, Park Forest, Ill., south who lost a 2-0 decision to Northwest Missouri's Stan Zeaman, later named the tournament's most valuable wrestler; John Voder, 158-pound junior from Woolstock, Iowa, and heavyweight Daryl Stanfield, freshman from Columbus, Ind. Jim Cartwright, coach man from Franklin Park, Ill., placed third at 134; Vince Emery, Omaha sophomore, fourth at 150, and Lon Reams, freshman from Sioux City, sixth at 126.

Pate said he had thought his freshman-loaded team might man-

age a fourth or fifth—but they really came on strong.

Other teams scores: Westmar 80, Northeast Missouri State 65, Luther 57, Fort Hays State 50, Kansas State of Emporia 47 and Morningside (last year's winner) 34.

Wayne swimmers lost a Friday night dual with Northwest Missouri, 55-48. Going into the final event, the 400-yard freestyle relay, held at 48 points, Wayne was the race by about three seconds, Coach Roger Bentley said, but was disqualified on a technicality not involving the Wayne relay quartet.

It was the third disqualification against Wayne swimmers. One of the others also involved a Wayne winner.

The Wayne 400-yard medley relay team of Pat Driscoll, Gary Neman, Barry Phelps and Bob Meredith set a Wayne State record at 3:58.8 also a NWM pool record.

Also winning firsts for Wayne: Rich Draper in the 1,000 and 500 freestyle, Driscoll in the 200 freestyle, Meredith in the 100 freestyle, Neman in the 200 breaststroke.

Bentley noted that freshman Paul Martin of Lincoln turned in excellent times in his second place in the 1,000 free and third in the 500 free.

More Wayne Herald sports on page 9.

Wischoff, Meyer Pin Opponents In Mat Defeat

Alan Wischoff and Jim Meyer pinned their opponents and Mark Beiermann added a decision to score the only points for the Wayne High wrestling team in its 35-13 defeat to Blair Tuesday night. The contest was held at Wayne.

Wayne suffered two pins in the meet before Beiermann came up with his decision, a 3-0 win over Jack Gilliam in the 115-pound class. Meyer added a pin one match later, a 2:35 handling of Randy Michelson in the 130-pound class.

Wischoff, this week's "Athlete of the Week," came up with his second straight pin in two starts this season when he used up only 1:35 of the clock before he finished his match with Steve Whilbush in the heavyweight division.

In between those bright spots, it was a disastrous evening for the Wayne wrestlers. The results of those matches:

Steve Klotz pinned Robert Locking in 3:35 in the 98-pound class; Randy Stricklett pinned Mark Wiltse in 3:40 in the 107-pound class; Karl Nathwall defeated Steve Jall, 3-0, in the 123-pound class.

Glen Davis pinned Bruce Ring in 3:40 in the 137-pound class; Marc Thompson pinned Rod Sievers in 1:35 in the 145-pound class; Blaine Stricklett defeated Rick Ginn, 3-0, in the 155-pound class.

Brian Peterson decided Doug Maurer, 3-0, in the 165-pound class; Mike Kelly defeated Gary Iethold, 3-0, in the 175-pound class; Rick Brown defeated Glenn Teeter, 3-0, in the 185-pound class.

Next action for the local grapplers is Saturday when they journey to Wahoo to take part in an 18-team invitational. Teams entered in that coming meet include Fremont, York and Schuyler. Preliminary sessions begin at 8:30. Finals start at seven o'clock the evening.

Trailing 14 to 10 going into the final three matches of the night, the reserve wrestlers came up with three pins to pull off a 25-14 win over the Blair squad.


Gaining those pins were Dave Sievers in 4:30 in the 175-pound division, Dave Ellis in 4:30 in the 185-pound division and Dave Johnson in 3:00 in the heavyweight class. Only other pin for the locals came in the opening match when Chuck Pierson disposed of his opponent in 4:30 in the 115-pound class.

Other results: Blaine Rubeck lost, 3-0, in the 123-pound class; Ron Ring lost 3-0 in the 130-pound class; Brad Ylugger tied his man, 2-2, in the 137-pound class; Mike Beiermann defeated his man, 3-0, in the 145-pound class; Mick Owens lost, 3-0, in the 155-pound class; Wayne Sievers lost, 3-0, in the 165-pound class.

More than a thousand Colorado's peaks soar higher than 10,000 feet, and 55 of them top 14,000, National Geographic says.

Athlete of the Week

Alan Wischoff
Wayne High School



By Norvin Hansen

"Wrestling doesn't come easy for him so he just works harder than most of the boys." That's how Wayne High Coach Don Koenig describes this week's "Athlete of the Week."

Named to that honor by the sports writers at The Wayne Herald was Alan Wischoff. He will receive a "Athlete of the Week" card from the newspaper.

Wischoff, a big senior at Wayne High who tips the scales at just over 200 pounds, earned the title for his performance during Wayne's opening wrestling match of the season last Thursday night. With Wayne trailing Fremont Bergan by three points, he used up only 58 seconds before he pinned his opponent in the final match of the night, giving the local grapplers a narrow 24-22 victory over that strong squad. Last year Fremont Bergan defeated Wayne.

If anybody had reason to doubt Alan's ability on the wrestling mat after that showing, he came back Monday night and did the very same thing in the meet with Blair. That pin took slightly longer: 1:58.

His coach says that he is not one of those natural athletes who have little difficulty in turning in good performances. Koenig says that Alan trains hard and works hard in order to make his consistently good showings in the wrestling matches.

He must have done exactly that last year in order to rack up those nine victories—seven of them by pins. Last season he lost seven of his matches, three of them to Dennis Maple of Neligh, a senior who later went on to a second-place finish in the state meet.

What enables Alan to turn in so many pins in the matches he enters? Coach Koenig says much of the reason is his exceptionally good balance, a trait which a wrestler can turn into a potent asset.

Wischoff, 17, has been out for wrestling each of the three years it has been offered at the high school.

He is the son of Mrs. Laverne Wischoff of Wayne.

WSC Holiday Meet Loaded with Talent

Christmas Holiday Basketball Tournament time is close for Wayne State and the twelfth annual show, scheduled Dec. 29-30, appears to be talent loaded.

Coach Dave Gunther believes the competition probably will be the best balanced in years, with Washburn University of Topeka, Kan., Briar Cliff College of Sioux City and Gustavus Adolphus of St. Peter, Minn., joining Wayne State in the college bracket.

Again the tournament will offer a high school division, following up last year's popular innovation. The entries: Wayne, Laurel, West Point and Schuyler High Schools.

As in the past, many Wayne business and professional men are sponsoring the tournament as they buy blocks of tickets for their customers and employees.

Also holding holiday tournaments Dec. 29-30 for area teams will be Wakefield and Lyons.

If a hunter should have a fall in the field, he should check his firearm carefully. A barrel clogged with mud, sand, or snow can be as lethal as a hand grenade.



HEY, WHAT'S UP? That seems to be the expression on the face of Les Echtenkamp of Wayne as well as Steve Erwin and Steve Smith of Laurel as they were caught in the action of the Wayne-Laurel game.

Gifts for All

FELBER PHARMACY

IMPREVU
COY GIFT SET
\$4.50

REVLON
TRUE-TO-LIGHT MAKE-UP MIRROR
\$24.95

INTIMATE
Sets from \$4.75
Colognes \$2.75
Powder \$2.75
Perfume \$3.00

Whitman Samplers
1-lb. \$2.35
2-lb. \$4.70
3-lb. \$6.95
5-lb. \$11.00
Other boxes from \$1.00

Alone Courts GIFT CERTIFICATE
Stretch Wigs Falls

FELBER PHARMACY

ÉLAN
GIFT SET \$6.00

AMBUSH Spray Cologne 3 oz. 3.50

Individually boxed offerings of 1-oz. Balalaika, Indiscret, Sirocco, Tailspin scents.

LUCIEN LELONG COLOGNES 1.25

TRAVEL CLOCK RADIO \$24.95

REMINGTON Lektro Blade™ 6 SHAVER \$24.95

HAI KARATE \$24.95

Always super-sharp with economical disposable blades • Comfort dial • Sideburn Trimmer

Featuring These Lines
HAI Karate Black Belt Brut That Man Mister L Canoe Pub Old Spice Signature Yardley Yu

NEW REMINGTON Replacement Blades 3 for \$1.95

BACCHUS Cologne & After Shave \$2.95

Inspired by Roman God of Wine, Women and Song.

Solid State 10 Transistor AM-FM Table Radio \$16.95

WALKIE-TALKIE - Solid State \$12.95

Solid State RADIO - 8 Transistor \$19.95

POLAROID \$11.95

FLASH CUBES \$1.80 - NOW \$1.19

INSTAMATIC CAMERAS from \$9.95

TUREX WATCHES from \$6.95

FELBER PHARMACY

RELIABLE PRESCRIPTION SERVICE SINCE 1906.

Phone 375-1611 Two Pharmacists To Serve You 216 Main Street

Coming
SATURDAY, DECEMBER 20
ARTIE SCHMIDT

- NOTICE -
We will be closed Monday, Dec. 22
Thru Thursday, Dec. 26.

We Are Still Serving
SMORGASBORD
on Sundays.

LES' STEAK HOUSE

IT'S COMPACT

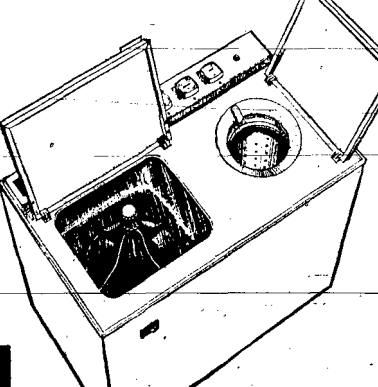
IT'S PORTABLE

IT'S ECONOMICAL

IT'S A WASHER

IT'S SUPERTWIN

IT'S A SPEED QUEEN



- No Special plumbing or installation
- Agitator Action
- Durable Press Selection
- 3 colors — Avocado - Coppertone - White
- "HAND-E-TOP" Laminate Cover Included

L. W. (Bud) McNatt
OK Hardware
203 MAIN ST. WAYNE PHONE 375-1533

A Bag Full Of Bargains For

HOLIDAY FIXIN'S

WITTIG'S HOME OWNED

SUPER VALU



Land O' Lakes Grade "A"
TURKEYS
39¢ lb.
 TOMS
 17-22 lb. avg.

CASH-NIGHT DRAWING
 in our store Thursday
 at 8 o m for \$150.00

Land O' Lakes Grade "A"
 Hen Turkeys 10-16 lb. avg **49¢**

Ocoma Boneless
 Turkey Roast lb. **99¢**

Boneless Pork or Boneless Beef
RUMP ROAST

\$1.19 lb.

SWANSON FROZEN
BREAKFAST **39¢**
 PANCAKES & SAUSAGE
 SCRAMBLED EGGS & SAUSAGE
 FRENCH TOAST & SAUSAGE

Three Diamond
 Oysters **3** 8 oz. cans **\$1**

Elf Brand
 Cream Cheese
 8 oz. pkg. **29¢**

ALBERT'S STUFFED
 Olives 10-oz. jar **69¢**

Super Valu
PUMPKIN **2** 303 cans **25¢**

Flav-o-rite Frozen Halves
STRAWBERRIES
4 10 oz. pkgs. **\$1**

BIRDSEYE
 Cool Whip **49¢** Large Quart Size

LAKEVILLE CHURNED
MARGARINE **3** 1 lb. pkgs. **\$1.59¢**

BAKERITE
 Shortening
 3-lb. can

Flav-o-rite
ORANGE JUICE
6 6 oz. cans **\$1** FROZEN

Borden's French Onion, Bacon,
 Horseradish, Garden Chive, Blue
Dips 8 oz. carton **29¢**

WEAVER'S Wavy
 Potato Chips Reg. 69¢ Twin Pak **49¢**

Super Valu
Chunk TUNA
3 6 1/2-oz. cans **89¢**

Order Your
GIFT FRUIT BASKETS
 NOW!
 Prices Effective
 Wednesday,
 December 17
 thru
 Wednesday,
 December 24.

FRESH CRISP PASCAL
CELERY
 large stalk **19¢**

GOLDEN NO. 1
Yams
 lb. **10¢**

Jellied or Whole
 Ocean Spray Cranberries . . . 4 No. 300 can **\$1**

NONE SUCH
MINCED MEAT 9-oz. Dry Pkg. **29¢**

Majestic Buckey
 Maraschino Cherries 10-oz. jar **33¢**

FOLGER'S REG., DRIP OR ELECTRA PERK
COFFEE
 3 lb. can **\$2.19**

Flav-o-rite Powdered or
Brown Sugar
 2 1/2 lb. bag **39¢**

Del Monte • PEAS • CORN • BEANS
VEGETABLES.. 5 No. 303 can **\$1**

FLAV-O-RITE
FANCY RICE 2-lb. bag **29¢**

FRESH RED OR WHITE
GRAPEFRUIT 10 FOR **59¢**

Pillsbury Crescent
 Dinner Rolls . . . 8 oz. pkg. **33¢**

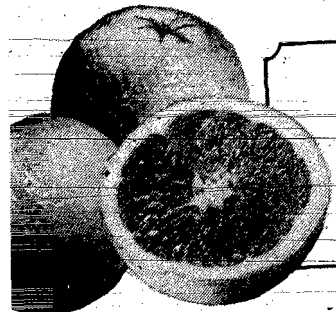
FLAV-O-RITE
BROWN & SERVE ROLLS or TEA ROLLS 2 PACKAGES OF 12 **35¢**

SUNKIST
Oranges
 large size **69¢** doz.

RED or GOLDEN DELICIOUS
APPLES
5 lb. bag **89¢**

ELF COUNTRY STYLE OR BUTTERMILK
BISCUITS 3 8 oz. tubes **25¢**

U.S. No. 1 IDAHO RUSSET
POTATOES
 King of The Baker's
10 lbs. **79¢**





PAPER DOLLIE FOLLIES: With a lively color imagination — like red, yellow, blue, green, orange and hues in-between — one can get the full effect of this black and white picture from the Paper Dollie Follies at Wayne State College. About 100 students in Richard Lesh's basic design classes created and modeled all manner of apparel from paper fabric. Pictured are (from left standing on stairway) Becky McCormack, Omaha; Jim Buschkamp, Crofton; Rhonda Giese, Minden, Ia.; (seated on railing) Mikki Miller, Bloomfield, and Sandy Bachenberg, Norfolk. (Sitting below) Rebecca Larson, Dakota City. All the designs are original, and all the outfits began with plain white paper.

Belden

Mrs. Ted Leapley
Phone 985-2971

Belden Community Club
Thirty-seven members were present for the Community Club supper meeting at Bobbie's Cafe Wednesday evening. Officers elected were Arnold Hansen, president; Kenneth Smith, vice-president; and Mrs. Ted Leapley, secretary-treasurer. Christmas carols were sung by the group. Next meeting will be Jan. 14.

Party Held Tuesday
English and Auxiliary held their annual Christmas party Tuesday evening in the bank parlors. Winners at cards were Matt Lackas, Mrs. Don Winkelbauer, Robert Wobbenhorst and Mrs. Earl Parks. Fred Pflanz won the prize. Gifts were exchanged and a no-host lunch served.

Hold Aid Meeting
Twenty-two members were present Thursday afternoon for the Presbyterian Ladies Association meeting. Pearl Fish reviewed the "Life of Moses." Devotions, "Christmas Candles," were presented by Mrs. Earl Parks. Mrs. Elmer Ayer and Dorothy Smith. Mrs. Paul Young was seated at the birthday table. On the lunch committee were Mrs. B. H. Moseley, Mrs. Darrell Graf and Mrs. Paul Young.

Mr. and Mrs. Clarence Kruger entertained at four tables of pitch Wednesday evening in their home. Prizes went to B. H. Moseley, Mrs. Ted Leapley, Vernon Goodsell and Mrs. Floyd Root.

Christmas Party Held
Sewing Club held their Christmas party at Bobbie's Cafe Sunday evening with supper and cards. All members and their husbands were present.

Pinocle winners were Charles Hintz, Mrs. Don Palnter, Ralph Putney and Mrs. Chris Graf. Mrs. Robert Gifford, Washougal, Wash., was a guest. An exchange of gifts was held.

Bible Study Held
Mrs. William Alderson was hostess to the Bible Study Group Friday afternoon in the bank parlors. Mrs. Bert Mitchell led the Bible study.

Mr. and Mrs. Ed Wobbenhorst,

Indianapolis, Ind., and Mrs. Ann Fesmire, Long Beach, spent Friday to Monday in the John Wobbenhorst home. Joining them for dinner Sunday were Jim Stbaecks, Norfolk, Fred Glenapps, Laurel, Janice and Judy Wobbenhorst, Wayne, Robert Wobbenhorst and Roger and Rhonda Graf.

Darrell Graf, Mrs. Herman Ehike and Mrs. Dean Jones visited Herman Ehike Sunday in a Sioux Falls hospital.

Churches -

Presbyterian Church
(Keith Cook, pastor)
Sunday, Dec. 21: Church, 9:30 a.m.; Sunday school, 10:30.

Catholic Church
(Father William Wheelan)
Sunday, Dec. 21: Mass, 8 a.m.

Fred Pflanz spent Saturday and Sunday in the Mrs. Mildred Caneca home, Omaha.

Vern Lewises, Schilbert, spent Wednesday to Friday in the Ed Pflanz home. Mrs. Loyd Fish joined them for supper Wednesday.

Guests Friday evening in the Alvin Newton home for his birthday were Terry Peters, Newbridge, Gary Newtons, Wayne Newton and William Pbs.

Floyd Roots spent Friday and Saturday in the Mrs. Joe Grause and George Brockley homes, Lincoln. Sunday they attended L. N. Tour reunion at Johnson Methodist Church.

Mr. and Mrs. Micky McDonald, Kingsley, Iowa, were supper guests Saturday in the Flert Jacobsen home.

Five Accidents On Police File

Wayne police investigated five auto accidents during the four-day period between Saturday and Tuesday. Accidents in Wayne reported for 1969 now total 178 in contrast to 157 a year ago.

One of two accidents Saturday occurred when the driver of a 1963 Oldsmobile sneezed while rounding a corner, according to police. Marvin Holdorf said he was turning onto Main Street in the 100 block and as he sneezed pulled too far to the right and struck a parked tractor belonging to Wayne Farm Equipment.

occurred at Seventh and Pearl Street. Randy Lutt was west-bound on Seventh in a 1967 Ford and turned left onto Pearl Street. His auto hit the west curb, according to police, and bounced to the east hitting an oncoming 1964 Buick driven by Carroll Russell of South Sioux City.

A 1964 Chevrolet driven by Wilbur Hestl stopped in the 100 block on West Third Street Sunday and was waiting for a traffic light to change. Police said he was hit by a 1962 Ford driven by Doreen Steffen backing out of a parking stall.

Officers investigated a collision Monday which occurred when a 1964 Mercury driven by Vona-Sharer stopped to turn into a

driveway and was struck from behind by a 1965 Chevrolet driven by Ralph Walker of Omaha. Walker said he could not stop in time and left 53 feet of skid marks. His auto damage was estimated to be \$493.93.

Gary Lee Eldridge of Iowa Falls, Iowa, told police Tuesday that he had parked his 1969 Chevrolet in the parking lot at the Igloo Drive-In and upon returning, found the left front fender of his auto had been hit by another vehicle which left the scene of the accident.

Got an "unwantable"? Advertise it in *The Wayne Herald* for fast results.

Aliens Must Report

Wyman R. Wilson of the United States Immigration and Naturalization Service stated this week the period within which aliens must report their addresses is almost at hand.

The month of January has been set for the address reporting period. All aliens in the United States, with few exceptions, must report their addresses to the government during that period. Wilson said that forms which will make the report will be available at all post offices and offices of the Immigration and Naturalization Service during the month of January.

MAKE IT A MERRY CHRISTMAS



REGISTER TO WIN ^{A NEW} CAR

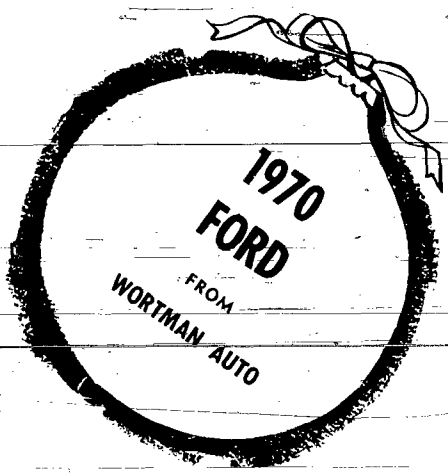
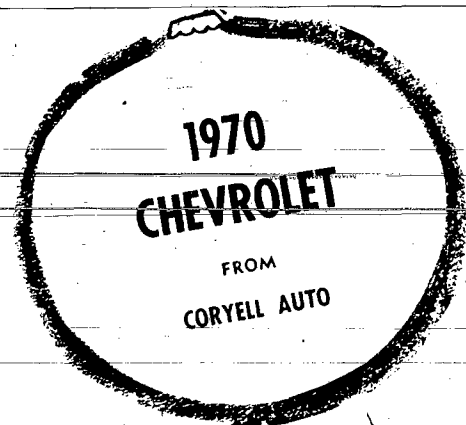
HURRY!
Only 5 Days Left

YOU CAN WIN - NOTHING TO BUY

What a wonderful 1969 Christmas you and your family will have if you hold the winning ticket on one of the New 1970 Automobiles. The more tickets you have the greater your chances of winning. Ask your Wayne merchants for your FREE TICKETS.

HURRY!
Only 5 Days Left

Your Choice of a...



DRAWING FOR THE CAR OF YOUR CHOICE WILL BE TUESDAY, DEC. 23

PICK UP YOUR WIN-A-CAR TICKETS AT THE FOLLOWING BUSINESS FIRMS:

- RON'S CAFE
- MERCHANT OIL CO.
- WAYNE BOOK STORE
- WITTIG'S SUPER-VALU
- SHERRY'S FARM STORE
- SAV-MOR DRUG
- SAFEWAY STORE
- PAT'S BEAUTY SALON
- WAYNE HERALD
- INTERNATIONAL HARVESTER
- FLETCHER FARM SERVICE
- RAY'S DX
- HAZEL'S BEAUTY SHOP

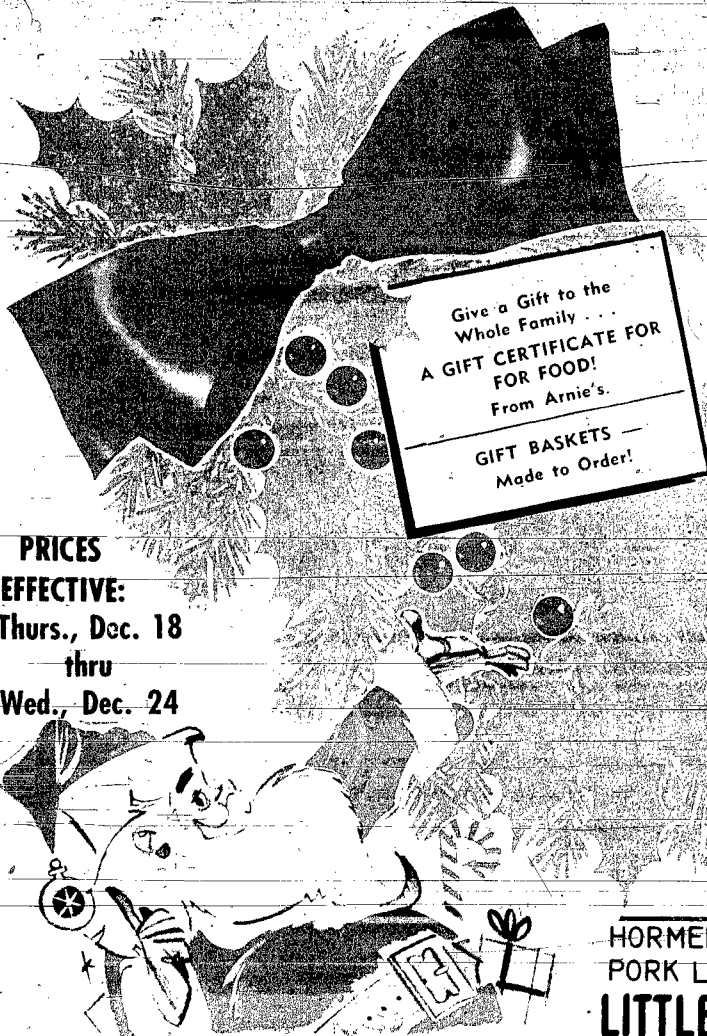
- DALE'S JEWELRY
- BARNER'S TV & APPLIANCE
- DON'S BETTER SHOES
- FELBER PHARMACY
- KTCH RADIO
- GAMBLE'S the Friendly Store
- GRIESS REXALL STORE
- M & S OIL CO.
- JOHNSON'S BAKERY
- KING CARPETS
- KUGLER ELECTRIC
- McNATT'S HARDWARE
- MORNING SHOPPER

- ARNIE'S (Your Home-Owned Super-Market)
- BRANDSTETTER IMPLEMENT
- FREDRICKSON OIL CO.
- CARHART LUMBER
- CARL'S CONOCO
- RED CARR IMPLEMENT
- COAST-TO-COAST
- SWAN-McLEAN CLOTHING
- SWAN'S APPAREL FOR LADIES
- SWANSON TV & APPLIANCE
- WAYNE MUSIC CO.
- WORTMAN AUTO CO.

- DOESCHER APPLIANCE
- FIRST NATIONAL BANK
- BLAKE STUDIO
- LES' STEAK HOUSE
- HERB'S BUICK
- LARSON-FLORINE
- STATE NATIONAL BANK & TRUST CO.
- McDONALD'S
- GAY THEATRE
- WAYNE FARM EQUIPMENT
- CORYELL AUTO CO.
- COUNTRY FURNITURE STORE

CHRISTMAS DINNER

make it everything it should be!



PRICES EFFECTIVE:
Thurs., Dec. 18
thru
Wed., Dec. 24

U.S.D.A. CHOICE
Lean and Juicy
GROUND CHUCK L.B. **63**^c
3-lb. pkg. \$179

U.S.D.A. CHOICE ROLLED
BEEF ROASTS
RUMP OR SIRLOIN TIP
L.B. **99**

U.S.D.A. CHOICE BONELESS
RIB EYE STEAKS
L.B. **\$1.69**

Norbest Grade A
Cooking gauge right in the Turkey pops up when done!
Red indicator will pop up when Turkey is done!
TURKEYS
lb **43**^c 14 lbs. and up

HORMEL PORK LINK
LITTLE SIZZLERS PKG **59**

FROZEN HOME MADE
HAM LOAF
2-lb. Frozen Tip **\$1.59**
To Bake or Fry.
(Prepared in an oven-ready pan)

SHURFINE FROZEN
ORANGE JUICE
6 oz. CANS
99

SHURFRESH BROWN & SERVE
ROLLS
2 PKGS. **49**^c

Rich Dipper
VANILLA
Vanilla, Chocolate, Strawberry, Neopolitan
RICH DIPPER ICE CREAM
\$1.00
GALLON

Libby's **TOMATO JUICE** Libby's
46-oz. Can **3**⁹⁹ For

SYLVANIA **FLASH CUBES**
PKG. OF 3 **99**^c

CASH NIGHT DRAWING
in our store
Thursday of 8 p.m.
for \$150.

DEL MONTE **PINEAPPLE**
Crushed
99^c

SCOPE Regular \$1.19 Large Size **89**^c
TEXSUN UNSWEETENED PINK GRAPEFRUIT JUICE
46-oz. can **39**^c

LIBBY'S **PUMPKIN**
2 303 CANS **39**^c

KRAFT MARSHMALLOW CREME
7-oz. JAR **19**^c

Libby's **CORN**
BUTTERED No. 2 can VAC. PAK **39**^c

EXTRA FANCY WASHINGTON DELICIOUS **APPLES**
3-lb. bag **49**^c

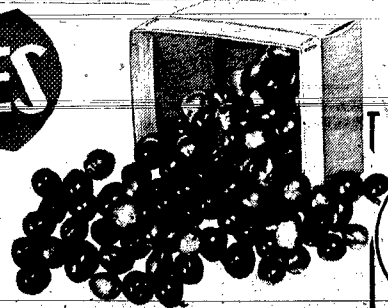
U.S. NO. 1 LOUISIANA KILN DRIED **YAMS**
L.B. **12**^c

PASCAL CRISP **CELERY**
Large Stalk **19**^c

Reynolds Wrap **FOIL** 18' x 25' **49**^c

BUTTER-NUT COFFEE 3 lb. can **2**¹⁹

FRESH **CRANBERRIES**
29^c lb. bag



ARNIE'S
1034 Main Just Across from the College Campus Phone 375-2440

EDITORIAL COMMENT

The editorial department of a weekly newspaper is an important department. Normally it is one person's opinion of topics that concern most of the readers.

You may not agree with an editorial — but if you read the editorial and give serious thought to the subject discussed you have gained. You, as a reader, have given careful thought to an important problem and the writer is proud to have called your attention to an important subject that you may have overlooked.

1970. Headlines

A game anyone may enter is that of guessing the headlines for the forthcoming year. It is a game where a little reasoning and common sense can provide a person with at least a 50 percent accuracy. Of course, if a person is half right, then he is also half wrong, but the game is fun.

ment Committee will hold hearings in several communities next year. State Senator William Wylie of Elgin is the committee chairman and the hearings will deal with consolidation of county school superintendent posts, proposed changes in motor vehicle taxation and merger of city and county governments.

Who is this lady?



A. Little Orphan Annie
B. The Jolly Green Giant
C. The Statue of Liberty
D. The West.

If you picked anything other than C, well, you're in a whole lot of trouble. Sure, you probably picked the Statue of Liberty. Everybody knows who she is and what she stands for.

They help make this country of ours economically stronger to tackle some of the problems that face us. And, buying Savings Bonds can be easy and automatic. All you have to do is join the Payroll Savings Plan where you work, or the Bond-a-Month Plan where you bank. And then you can sit back and forget 'em while the money piles up.

Way Back When



30 Years Ago

December 14, 1939: The public address system bought by Wayne city council from W. C. Swanson has been installed and was used for the first time Wednesday afternoon for the community Christmas program. Fire about midnight Wednesday destroyed three stacks of hay, about 30 tons on the August Bronzynski farm six miles northwest of Winside.

25 Years Ago

December 14, 1944: R. H. Hansen's farm sale was very satisfactory. T. J. Hughes officiated. Hansens will move to the house they bought in Wayne. T. S. Hook, Wayne, was one of 50 outstanding ministerial and lay leaders of the Presbyterian Church selected in the United States to attend a post war planning conference in Denver.

20 Years Ago

December 15, 1949: Janis and Berta Vidzickis, Latvian displaced person, arrived in Wayne to begin work in the Tri-State Nursing home. Yale K. Kessler has been elected vice-president

of the Nebraska Library Association. For the first time in many years there are no Aglers living in the southwest Wakefield vicinity. Mrs. Lawrence Ring commented on this when she reported the moving of Mr. and Mrs. Ray Agler Sr. to Wayne and the Ray Agler Jr. family to a Wayne route. The senior Aglers lived in the vicinity 47 years. Coach Don Emery and a 10-man WSTC boxing crew will leave on a three college barnstorming tour that will end in the deep south.

15 Years Ago

December 16, 1954: Harlan Wentzel, son of Rev. and Mrs. K. F. Wentzel, Altona, will appear with Concordia Teachers College A Cappella choir, River Forest, Ill., on the annual NBC Christmas broadcasts. Nearly 1,500 bushels of Wayne County corn left Wayne last Tuesday, destined for use of refugees in Germany, Korea, Palestine, India, Yugoslavia and Hong Kong. The corn was gathered in the Wayne County area through the efforts of Lutheran churches in connection with the All Lutheran Food Appeal.

10 Years Ago

December 17, 1959: Ralph E. Watson, Wayne, this week received a certificate from the U. S. Weather Bureau for his 10 years of service as a local weather observer. Heinz Otte, son of Mr. and Mrs. Karl Otte, Wayne, was one of 14 University of Nebraska students elected into Phi Tau Sigma, national honorary fraternity for mechanical engineers. An estimated 1,000 persons attended the twenty-second annual presentation of Iland's "The Messiah" Sunday evening at WSTC's Rice Auditorium. Wayne High students have received new driving restrictions. The restrictions do not allow students to drive their cars to school if they live less than eight blocks from the school grounds. Parking stalls have been assigned to student drivers and all cars must remain at the school over the noon hour.

A Change in Power

Each generation seems to believe it lives in a time of great change, progress and accelerated living. Our generation is no exception. With the city light plant holding open house this weekend, we recall that not so many years ago a man supplied his own humble dwelling with all of its utility services which included heat, fuel, light, water, sewage and garbage disposal, transportation and food. His home, be it ever so humble, was mostly a self-contained unit.

average household is out of commission. The iron doesn't iron, the lights don't light, the fans don't fan, the stereo doesn't sound off and ad infinitum. Consumption of electricity is growing at such a rapid pace that a city such as Wayne must plan and build years in advance to meet customer demand.

Take stock in America

Buy U.S. Savings Bonds

roads which have so far received only a thin layer of paved surface as part of the "stage construction" program of a few years back.

Another project on the list is a \$639,000 job to improve Nebr. 15 north toward Wayne for 5.6 miles from the junction with U.S. 275.

Platte Bridges Planned

Several new or reconstructed bridges over the Platte River are in the plans for next year. The schedule calls for a bridge at Oshkosh on Nebr. 27 at an estimated cost of \$384,000.

The six-year program calls for 95.5 miles of grading and structure construction not included in interstate plans for 1970. The cost has been figured at \$76.9 million for those and other interstate projects during the period.

Work also is planned on the Nebr. 71 bridge connecting Gering and Scottsbluff at an estimated cost of \$225,000.

Work on 2,948 miles of state highways is planned for the remainder of the six-year period at a cost of nearly \$216 million.

Out of Old



Nebraska

Early Nebraska Postal Service

Since the settlers relied on the mails as their primary means of communication, post offices were among the first public institutions to be established in early Nebraska communities. Although most towns or villages had a post office, many others were located in rural areas, often at the home of a local resident.

Some of the most interesting post offices were in territorial Nebraska. Since the early Nebraska editors depended heavily on the Eastern newspapers for many of the articles they published, the following trade against the postal service may have had some justification:

GAMES 'GAMES' GAMES

• Hot Wheels	• Touring	• Match Box Cars
• Spirograph	• Password	• Cross Up Poker
• Anagrams	• Trake	• Rolomatic Bridge
• Humor Rumor	• Scrabble	• Beginners Bridge
• Easy Money	• Pass-Out	• Renaissance Chessmen with board
• Battleship	• Flinch	• 5 Children's Card Games
• Hands Down	• Pit	• Color Dominoes
• Score Four	• Tripoly	• All-Pro Basketball
• Bridge for One	• Tip It	• All Types Puzzles
• Bridge for Two	• Oh No	• Mystery Date Game
• The Last Straw	• Rack-a	• Frustration Ball
• Word Wild	• Skunk	• Concentration
• Body English	• Risk	• One More Time
• Jacks Game	• Kismet	• Scrabble for Juniors
• Silly Sand	• Probe	• Marble Maze
• Bug-A-Boo	• Yahtze	• Weaving Loom Set
• Fascination	• Peeko	• Sketch-A-Tune
• Funny Face	• Kaboom	• Don't Spill the Beans
• Aggravation	• Whoops	• Battling Tops
• Balloon Game	• Bash	• Talking J. P.
• Marble Game	• Qubic	• Talking Julia
• Donkey Party	• Ring Toss	• Game of States
• Woodburning	• Jeopardy	• Playskool Toys
• Tiddly Winks	• Operation	

MANY MORE GAMES AND TOYS TO PICK FROM!

WAYNE BOOK STORE

AND OFFICE SUPPLY

219 Main St.

Phone 375-3295

Capital News

State Department of Roads Unveils Construction Plans

LINCOLN—The State Roads Department has told Nebraskans what jobs it intends to put under construction in 1970. It is the first time the department ever has outlined its detailed plans a year in advance.

L-80 Bridge Job Scheduled

One of the most expensive contracts slated for 1970 letting is for construction of the superstructure of the L-80 bridge over the Missouri River in South Omaha.

Dustless Surfacing Sought

Road Department officials said there would be a major assault on state highway which still has only a gravel surface. Paved surfacing for 173- or 19 percent of the more than 900 miles of state highway still graveled is included in the 1970 program.

Extra Spending Money

Two girls or boys needed to deliver evening Norfolk Daily News. Good profits and business experience.

NO SUNDAYS OR HOLIDAY DELIVERIES.

Contact MRS. CLETE SHARER, 375-3835, or leave name and address at The Wayne Herald.

Initial work will benefit from the sale of \$30 million in bonds this year and next. Nuernberger said he would begin work im-

mediately on a new six-year program — for the years 1970 through 1976 — which will be predicated on an annual bond issue of \$15 million.

When sea gulls devoured a horde of large black crickets that threatened to wipe out the Mormons' first grain crop in Utah in 1848, the sect was so grateful that it passed laws protecting the bird and erected a monument to it in Salt Lake City's Temple Square, National Geographic says.

HOSKINS NEWS

Mrs. Hans Asmus - Phone 565-4412

Mrs. Ruth Langenberg spent the weekend in the Jack O'Hane and Roy Jensen homes, Omaha. Sunday evening Mr. and Mrs. Clarence Schroeder returned from three weeks in Rochester, Minn., where Mr. Schroeder was hospitalized. Norris Schroeder, Fort Morgan, Colo., accompanied them to Hoskins after spending a week in Rochester. Clarence Schroeders plan to return to Rochester within the next six weeks where Mr. Schroeder will undergo heart surgery.

prizes were won by Mrs. Delbert Hoover, Robert Nurnberg and William Viergutz. Jan. 9 meeting will be in the Viergutz home.

Club Meets Saturday
Pitch Club met Saturday evening in the Harry Wether home for a 7 p.m. carry-in supper. Mr. and Mrs. J. E. Pingel were guests and pitch prizes were won by Mrs. Herman Bretschneider, Hilbert Neltzke, Mrs. Raymond Walker and J. E. Pingel.

Society -

Hold Concert
Advent-Christmas concert was held Sunday evening at Trinity Ev. Lutheran Church. Director of choirs was Ronald Schmidt and accompanists were Mrs. Oscar Zander and Judith Schultz. Following the concert choir members and their families held a coffee hour in the Parochial School basement for visiting pastors and teachers and their families.

Hoskins Garden Club Meets
Hoskins Garden Club held a no-host dinner in the Carl Witter home Saturday. Roll call was answered with favorite Christmas carols.

Mrs. George Wittler read a poem, "Masterpiece," and Mrs. Edwin Melerhenry read, "Post-Christmas." Mrs. Carl Hinzman brought a Santa apple favor.

Mrs. Reuben Puls read, "The Heart Gift," Mrs. Hattie Prince read, "Fireplace Fantasy," and Elpha Schellenberg told about her girlhood Christmas days.

Mrs. H. C. Falk read a poem, "Fresh Fruit," Amella Schroeder gave, "Eternal Heritage," and Mrs. Fred Jochens conducted a contest. Mrs. Erwin Ulrich read a poem. Secret pals were revealed and new names drawn.

The group held a gift exchange and cookies and coffee were served at the close of the meeting.

Entertain Friday
Mr. and Mrs. Harry Schwede entertained Mr. and Mrs. Card Club Friday evening. Pitch

Have Christmas Supper
Walter League held a no-host Christmas supper at Zion Lutheran Church Sunday evening. Twenty-one members and a guest, Eva Ryan, Pastor and Mrs. Jordan Artt and sponsors, Mr. and Mrs. Clemens Welch, were present. Entertainment was games, Christmas carols and a grab bag gift exchange.

The Leaguers will sing at Zion Church Christmas Eve.

Guests of Mr. and Mrs. Dallas Schellenberg Thursday evening for Byron's seventh birthday were Harlan Herbolshelmers, Tom Altwines and Harold Wulfs, all of Pierce, Dick Tegeler, Norfolk, Max Lanphears, Marlin Strate, Clarence Hamms and Elpha Schellenberg. Pitch prizes were won by Mrs. Herbolshelmer, Max Lanphear, Mrs. C. Hamm and Mr. and Mrs. Tom Altwine. Marlin Strate was an overnight guest. Carry-in lunch was served.

Mr. and Mrs. Eric Melerhen-

ry entertained the Birthday Group Friday evening for her birthday. Pitch prizes were won by Mrs. Ernest Machmiller, Mr. and Mrs. Erwin Ulrich and Ed Maas.

Churches -

Zion Ev. Lutheran Church (Jordan E. Artt, pastor)
Saturday, Dec. 20: Saturday school, 1 p.m.
Sunday, Dec. 21: Worship, 9:15 a.m.; Sunday school, 10:15; Christmas program practice, 1:30 p.m.

Trinity Ev. Lutheran Church (J. E. Lindquist, pastor)
Friday, Dec. 19: Communion announcements, 3:30-4:30 p.m.
Saturday, Dec. 20: Communion announcements, 2-9 p.m.
Sunday, Dec. 21: Worship with communion, 10 a.m.
Tuesday, Dec. 23: Christmas treats for Christmas will be sacked by families whose last names begin with "B" at 8 p.m. In the school basement.

United Methodist Church (J. E. Saxton, pastor)
Saturday, Dec. 20: Saturday school, 9:30 to 11:30 a.m. at Peace.
Sunday, Dec. 21: Worship with children's choir, 9:30 a.m.; Sunday school, 10:30; Christmas program, 7:30 p.m.
Monday, Dec. 22: Youth fellowship Christmas party, Norfolk State Hospital, Ward 6, 7 p.m.
Thursday, Dec. 25: Christmas Day service, 10 a.m.

Peace United Church of Christ (J. E. Saxton, pastor)
Saturday, Dec. 20: Confirmation classes, 9:30-11:30 a.m.; children's Christmas rehearsal and party, 1:30 p.m.
Sunday, Dec. 21: Sunday school, 10 a.m.; worship, 11 a.m.
Monday, Dec. 22: Youth Fellowship Christmas party, Norfolk State Hospital, Ward 6, 7 p.m.
Tuesday, Dec. 23: Choir, 7 p.m.
Wednesday, Dec. 24: Christmas Eve service, 7 p.m.
Thursday, Dec. 25: Christmas Day service for both churches, Hoskins, 10 a.m.

Funeral Services For J. Grashorn Held in Wisner
Funeral services for Dietrick John Grashorn, 73, Wisner, were held Dec. 10 at St. Joseph Catholic Church, Wisner. Mr. Grashorn died at a Norfolk hospital Dec. 7, 1969.

Survivors include his widow; one daughter, Mrs. Elwood Minds, Beemer; three sons, Edward and Albert of Wayne and Richard of Wisner and 17 grandchildren.

WINSIDE NEWS

Mrs. Edward Oswald - Phone 286-4872

Guests gathered Sunday in the Otto Maas home to observe Pete Jensen's birthday.
Mr. and Mrs. Otto Schlueter, Humphrey, visited in the Jack Brockman home Friday evening and attended the Winside School concert.

Mrs. George Farran and Melissa spent Wednesday to Friday in the Eugene Miller home, Omaha. Millers were weekend guests in the Farran and Alfred Miller homes.

Society -

Hold Dinner
Ten members were present Wednesday for the Immanuel Women's Missionary Society 1 p.m. Christmas dinner in the Fred Jochens home.

Each member contributed an article for the program. Secret sisters were revealed and the annual gift exchange was held. Christmas cards were sent and boxes were packed for shut-ins. January 14 meeting will be in the Bill Fenske home.

Auxiliary Meets
Auxiliary met Saturday afternoon at the Legion Hall with four officers and eleven members present for the no-host Christmas dinner. Guests were LeNell Zoffia and Diane Schreiner. Dessert hostesses were Mrs. Sam Reichert and Gladys and Mrs. Evelyn Schreiner.

A gift was sent to the Nebraska Children's Home at Omaha and get well cards were sent.
Mrs. I. F. Gaebler was program chairman. LeNell Zoffia presented two piano solos and gave a reading, "Why We Have Santa Claus." Diane Schreiner gave a reading on Christmas flowers. Bible scriptures were read by Mrs. Marvin Kramer. Christmas readings were also

The Rev. Norbert Boland officiated at the rites. Pallbearers were John and Larry Grashorn, Wayne; Mike and Roger Grashorn, Wisner; Joe Grashorn, Ft. Bragg, N. C., and Gaylen Minds, Beemer. Burial was in the Wisner Cemetery.

Dietrick John Grashorn, son of Mr. and Mrs. Henry Grashorn was born April 18, 1896 at Wisner. On Sept. 27, 1922 he married Agnes Osman. They lived on a farm north of Wisner until retiring and moving to Wisner. Mr. Grashorn was a member of the St. Joseph Catholic Church, Wisner.

Survivors include his widow; one daughter, Mrs. Elwood Minds, Beemer; three sons, Edward and Albert of Wayne and Richard of Wisner and 17 grandchildren.

given by Mrs. Gaebler who accompanied group singing. Next meeting will be Jan. 10.

Surprise Couple
December 6 Neighboring Circle Club members honored Mr. and Mrs. John Rohlf for their approaching 50th wedding anniversary at the Legion Hall. About thirty were present. The Herbert Jaeger family were guests.

Prizes at cards went to Mrs. Paul Zoffia, Mrs. Rohlf, Amle Koll, Herman Koll and Hans Carstensen.

Rohlf's were presented a gift and the cake, baked and decorated by Mrs. Evelyn Schreiner and Mrs. Carl Ehlers, was cut and served by Mrs. Leo Voss.

Mrs. Herman Koll, club president, poured. The serving table was decorated in gold and white and Mrs. Rohlf was presented a corsage.

Neighboring Circle Meets
Neighboring Circle met Thursday in the Leo Voss home for a 1 p.m. Christmas luncheon. Eleven members answered roll by revealing nut shell friends and drawing names for next year. Christmas carols were sung and card-bingo prizes were won by Mrs. Leo Voss, Mrs. Herman Koll, Mrs. Henry Langenberg Jr. and Mrs. Robert Koll. A grab bag gift exchange was also held. January 8 meeting will be in the John Rohlf home.

Social Forecast
Thursday, Dec. 18
Center Circle Christmas supper, Legion Hall, 6:30 p.m.
Coterie, I. F. Gaebler.
Friday, Dec. 19
Pinochle, Mrs. Cora Carr
Three-Four Bridge, E. T. Warnemunde.
Sunday, Dec. 21
Trinity Lutheran League
Monday, Dec. 22
Bridge Club, Charles Jackson

Churches -
United Methodist Church (Robert L. Swanson, pastor)
Saturday, Dec. 20: Christmas

The Wayne (Nebr.) Herald, 3
Thursday, December 18, 1969

program practice.
Sunday, Dec. 21: Sunday school, 10 a.m.; worship, 11 a.m.
Wednesday, Dec. 24: Christmas Eve program, 7:30 p.m.

Trinity Lutheran Church (Paul Reimers, pastor)
Sunday, Dec. 21: Sunday school, 10 a.m.; worship, 11 a.m.; Sunday school Christmas program.

St. Paul's Lutheran Church (H. M. Hilpert, pastor)
Friday, Dec. 19: Office hours, 7-9 p.m.; Walthers League Christmas rehearsal, 7 p.m.
Saturday, Dec. 20: Christmas program rehearsal, 12:30 p.m.; Sunday school and Bible class teachers, 7 p.m.
Sunday, Dec. 21: Sunday school and Bible class, 9:30 a.m.; worship, 10:20.

Tuesday, Dec. 23: Choir.
Wednesday, Dec. 24: Christmas Eve program, 7 p.m.
Thursday, Dec. 24: Christmas worship, 10:20 a.m.

Wakefield Hospital Notes

Admitted: Diane Schultz, Allen; Gladys Roberts, Emerson; Margaret Schlines, Wakefield; Dorothy L. Swan, Wakefield; Paul Soderberg, Wakefield; Carey Rhoads, Wayne; Jeanmarie Fox, Homer; Diane Dohrman, Emerson; Lloyd Meyer, Newcastle; Ardyth Heinemann, Wakefield; Lillie Henschke, Wakefield; Irene Lutt, Wayne; James G. Severson, Emerson; Edward Sebade, Emerson; Greg Carr, Allen; Kenneth Ellis, Allen; Jill Jacobsen, Laurel; Hjalmar Parson, Wakefield; Beryle Rahn, Ponca.

Dismissed: Myrtle Nord, Emerson; Dorothy Swan, Wakefield; Paul Soderberg, Wakefield; Robert Wheeler, Allen; Edward Sandahl, Wakefield; Herbert Fredrickson, Wakefield; Diane Schultz and son, Allen; Marie Fredrickson, Wakefield; Carey Rhoads, Wayne; Greg Carr, Allen; Diane Dohrman, Emerson; Edward Sebade, Emerson; Hjalmar Parson, Wakefield.

Borrowing a hunting permit from another person is prohibited by Nebraska law.

At **CARHART'S**

OUR SPECIALTY IS KITCHEN FACE-LIFTING

All it takes is a colorful, new Vinyl Corlon floor by **Armstrong**

New Sherwood™ Vinyl Corlon - swirling leaflike vinyl shapes molded into a sea of translucent vinyl. An exciting new floor design that will give a lift to any kitchen. See how little it costs to make your kitchen look young again!

ONLY **\$665** Lineal Ft.

WE CLOSE AT 4:00 P.M. SATURDAYS

Carhart LUMBER CO.

Ellis CORNED BEEF HASH



THERE IS STILL
TIME --- to Join
Our
1970
CHRISTMAS CLUB!

Join today and receive a beautiful
Serving Tray FREE!

Enjoy all the Convenience
of Full-Service Banking
to Meet Every Requirement.

The State National Bank and TRUST COMPANY
MEMBER F.D.I.C.

WATERTOWN MONUMENT WORKS, INC.
Monuments Are Our Precious Heritage
CARL BICHEL
615 Douglas Phone 375-1394
Compare Quality



May We Be of Assistance?

Lyman Photography
211 Main 375-1140
Closed Mondays

FARM PAGE

Good Morning Feeders & Hi Mom

By Eddie Collins

Farm Mom, everybody has problems. Every farm meeting, every organization airs theirs with the resultant amendments upon amendments... but with little results.

Farm Moms, forget those minor problems. Quality beef is about to be "jettisoned" into the butter-margarine role... served only on festive family occasions.

Hello, synthetic hamburgers. Make mine...ugh...raw. Hello, cottonmeat roasts. Make mine crisp on the outside, medium to rare in the center. Easy on the cotton boll weevil.

Government is about to feed America...with a limited budget. Food on every table. This is a great idea. No innocent should ever go hungry in our country.

Question raised, to the consumer champion of New York, Senator Javits. Will choice beef be used? Are you kidding? Too expensive.

Then how about low-grade beef? Oh, didn't you notice? Those are now state fair purple ribbon winners. Well, then, switch to domestic cow meat. Sorry, since butter went out, so did those surplus milking daddies. Then, Senator, that means your first love, imports. No, beef protein calculates out over \$3 per pound. There is a cheaper protein form... at 14¢ a pound.

Mom, that means synthetic fibers. The foot in the door approach. Move over butter! Make room for cattle not only the ten gallon hats, the big belt buckles, the high-heeled boots, boys, add another peg for the billed caps, coveralls and insulated boots. Why? Simple: complacency.

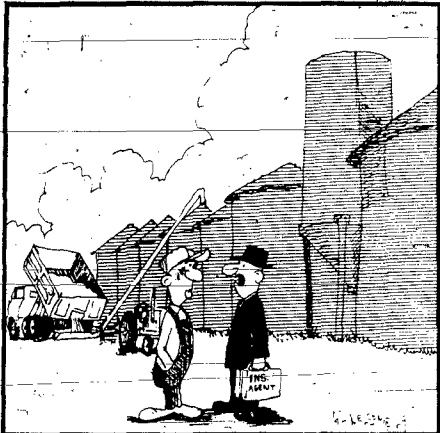
Mom, name one cattle feeder, name one breeder who stands up to be counted above an amendment. And without fat cattle demand, who will need the corn?

—Farmers have great efficiency, right down to supplying the USDA statistical service enough news to guarantee one dollar corn. And the chain stores power to take the June cattle market six dollars a hundred with cattle-on-feed reports. Name one farmer who was helped by such reports... just the consumer.

Problems are easy... difficult are the solutions.

You need promotion. Cattle-men must make the idea of quality beef, must make Steakhouse quality, hotel quality, Vacation quality a home necessity to the discriminating housewife. Must establish a status symbol so strong, so powerful that no self-respecting mother would be caught without it. A superior product... cornbelt raised, corn-fed quality beef. A home treat.

Unfortunately, many farmers grumble and turn as knuckle-white, even on a five-cent check-



"I thought you were hailed out last summer."

County Agent's Column

by Harold Ingalls

Swine Conferences Set Here

The second annual Area Swine Farrowing House Conference will be held in January, University of Nebraska Extension Agricultural Engineer E. A. Olson announced this week.

The meeting is designed to cover all aspects of planning and construction of the modern farrowing house and is scheduled for Jan. 15-16 at Wayne. Curtis Papenhausen, Coteridge swine producer, will appear on the program at Wayne to outline what he expects in a farrowing house, Olson said.

Other topics on the program include planning, insulation, heating, ventilation, construction methods, costs and manure disposal. Several NU College of Agriculture and Home Economics staff members will discuss new developments in swine housing

and will be on hand to counsel individually with producers.

An added highlight of the meetings will be manufacturers' displays of prefabricated swine facilities. Factory representatives will be present to discuss the features of their respective units.

Costs of meals and handout materials will be included in registration costs. Olson advised producers to contact their respective agents in advance to make reservations for the meetings and secure other details.

It is anticipated that producers within a radius of 75 to 100 miles of Wayne and McCook will attend the meetings. ***

Synthetics Continue Threat

Synthetics and substitutes are going to continue to compete with farm products, reports the USDA.

The dairy industry is under some of the heaviest pressure with substitutes taking over half the butter market and a substantial share of the coffee cream market. The domestic demand for cattle hides has been constant for the past ten years with 69 leather substitutes now available - most all under selling leather. By 1980, the domestic market will probably use less than half of the 46 million hides produced in the U. S., predicts the USDA.

Corn Borer Numbers Up

Increases in European corn borer numbers from one year ago have been found throughout five cropping districts surveyed in the state, according to David Keith, extension entomologist at the University of Nebraska.

In a recent study of second brood corn borer, Keith found that the greatest increases from 1968 to 1969 were in the northeast and east cropping districts. The northeast district experienced a 28 per cent increase in number of plants infested per 100 plants. Borers per 100 plants increased during the year's time from 65 to 188. The eastern district jumped 15 per cent in number of plants infested, and 110 more borers were noticed per 100 plants.

Lowest infestation has been in the central region, with 57 per cent, eight per cent lower than the next highest infestation. Only 94 borers were found per 100 plants, which was half the

Interest Income. Then promote.

Not by bumper stickers at Ames or Grand Island or Waco. But promote nationwide, first class. On the Tonight Show... use national football, use the pros... use both sports figures and Madison Avenue. Coordinate and share costs and ideas with the major advertisers. Quality cattle for quality-minded people. And, why not? There's nothing finer than corn-finished beef.

Until you producers promote your products, you have no efficiency... you're still only half way.

heaviest infestation by district. The NU entomologist warned that this forecast does not predict what will happen in 1970.

Northeast Extension Notes

by Myrtle Anderson

Fire-Free Holidays

No one wants a fire any time - least of all during the holidays. Here are a few recommendations made by the National Fire Protection Association which, if followed, can prevent such fires:

—For a natural tree, pick a fresh-looking, firm-needled one, saw off the butt an inch above the old cut, stand it in water and keep it in water until you dispose of it - which should be soon after Christmas. Don't rely on do-it-yourself flameproofing treatments since none is truly effective. Locate the tree away from heat and where it won't block escape.

Artificial trees should be clearly marked as made of slow-burning materials. Look for the Underwriters' Laboratories (UL) label on trees with built-in electrical systems. With metal trees use only indirect lighting to avoid shock hazard.

Check lighting strings for frayed wires, loose connections, broken sockets. Replace only with UL-labeled sets. Bulbs made in U. S. generally are safer; imported ones may have dangerous hot spots. Electric cord sets with built-in fuses are strongly recommended. For outdoor lighting use only sets UL-listed for this purpose. Always turn off tree and other indoor holiday lighting when you leave the house or retire for the night.

Use non-combustible decorating materials - metal, glass, asbestos - where possible. Make sure cotton batting, flock and decorative paper are flameproofed. Natural evergreen decorations dry quickly, burn readily, so keep lit candles well removed from them. Don't use polystyrene foam for candle holders or for table or mantle decorations where candles are also used.

Dispose of gift wrappings promptly and safely - the fire place is not a safe place to burn them.

Never leave children unattended. Watch those playing near the tree and keep matches and lighters out of their reach.

Have a family escape plan worked out and rehearsed in advance in case fire strikes your home.



REVIEW FEED GRAIN PROGRAM. Mrs. Genevieve Williams answers questions regarding the Agricultural Conservation Program during a meeting of 32 ASCS committeemen Monday afternoon in the ASCS office. Ray Butts, ASCS office manager, is standing at left.

'Agriculture Must Share Blame for Water Pollution'

By William Yost
SCS District Conservationist

Americans are beginning to be concerned when they hear the word pollution. The dictionary says the word means "to make unclean." Unclean air, water or soil seriously affect a desirable environment, and the general public is becoming aware of the consequences of a polluted environment.

Agriculture must share the blame in contributing to the pollution in many of our streams and lakes. We have known for years that sediment is filling up our stream channels, ponds and reservoirs, and even causing

fish kills.

When rains produce run-off in the fields, the running water will pick up and move soil particles, plant residues, manure particles, infectious organisms and any salts, nutrients or pesticides that may be on the soil surface.

How can this be stopped by soil and water conservation? Any method used to reduce the loss of soil and water from the field will retard the potential pollution of streams and reservoirs. Terraces, contour farming and minimum tillage are all long-time approved erosion control methods that will assist with the pollution control problem.

The job of soil and water resources in northeast Nebraska is a long way from being done. A drive in the country after intense rains will show numerous fields planted up and down hill with

rills and ditches. Muddy water flows from the land. Many pesticides and fertilizers are also moving to our streams and ponds, contributing to pollution.

Agriculture must recognize its role in preventing pollution. Individual land owners and operators must take positive action in applying soil and water conservation measures to their farms.

The Soil Conservation Service is an agency which will assist in planning and applying pollution control practices. Cost-sharing is also available from the ACP program.

First navigation of the Northwest Passage by a single ship was completed by Norwegian explorer Roald Amundsen's Gjoa in 1903. His 47-ton ship is on display in San Francisco.

ASCS Committee Reviews Yields On '70 Program

Thirty-two community committees for the Wayne County Agricultural Stabilization and Conservation Committee met at the ASCS office in Wayne Monday afternoon to review yields on the 1970 feed grain program, according to Ray Butts, office manager.

There are a total of 39 community committeemen who started their year one of service Oct. 1. They help the county committee in administering ASC programs and meet several times a year.

Larry Heinemann, chairman of the county committee, was in charge of the feed grain review assisted by office personnel.

The feed grain program basically involves corn, grain sorghum, wheat and barley and is voluntary in nature.

Upon the death of ASCS Chairman John H. Mohr, Vice Chairman Larry Heinemann was made chairman of the county committee and Lloyd Morris is now vice chairman. Ralph Olson was an alternate but is now a regular member of the county committee.

Club Family Night, Christmas Party Held

Pleasant Valley 4-H Club held their annual Christmas party and family night Monday evening at the Carroll auditorium.

The program included trumpet solos by Danny Hansen and Dennis Magnuson, a vocal duet by Lynette Hansen and Chuck Jaeger, accompanied by Kelly Hansen, and group singing, accompanied by Mrs. Cyril Hansen.

Herb Niemann had charge of games and a gift exchange was held. Cooperative lunch was served at the close of the evening.

Randy Holdorf, news reporter.

HERTZ COMMODITIES ST. JOSEPH, MISSOURI Fred Hertz Cattle - Futures - Commodity Trading Phone 238-1492	PLATTE RIVER WEST TORRINGTON LIVESTOCK AUCTION "Wyoming's Largest" L. W. Maxfield, Owner PHONE 308-532-3333 3000-6000 Wyoming's Best Fall Specials - Wednesdays Regular Sales - Fridays KEARNEY LIVESTOCK Gene & Robin Marshall Thursday Sale Days Kearney, Nebr.
Following Western Auctions are endorsed by Eddie Collins as being Fair, Honest, and with Fresh, Choice to Fancy Quality, Consigned Stockers and Feeders.	WESTERN LIVESTOCK AUCTION CO. North Platte, Nebraska Regular Sale Friday Specials Tuesdays 2000-4000 Head Glen Helberg 362-2761 James Calhoun 532-0249 Office 308-532-0861
FABELOUSE BRAND COUNTRY NORTHWEST NEBRASKA CHADRON SALES COMPANY Don & Ralph Strothelde Phone 308-432-5581 Tues. Sales	PLATTE RIVER**CENTRAL CURTIS LIVESTOCK AUCTION CO. Curtis, Nebraska Quality None Better 1200-2500 on Wednesdays Melvin Husa 308-324-4674 Ronnie Rogers 324-4523
SHERIDAN LIVESTOCK COMM. CO. Rushville, Nebr. Bobby Jagers - Ray Boyer Phone 308-327-2406 2200-4000 Baby Dolls MONDAY Sale - Day - Wednesday Specials GORDON LIVESTOCK AUCTION CO. Frank Dieck "Computerized Service" Phone 308-177 2200-4000 Leather Poppers Sa 16 Days Monday Specials Thurs.	LEXINGTON, NEBRASKA "Nebraska's Largest Sale of Consignee Cattle" 3000-6000 Head Regular Sale Friday Melvin Husa 308-324-4674 Ronnie Rogers 324-4523 Office 308-324-4664
ALLIANCE LIVESTOCK AUCTION CO. Jack Ressiglein - Jack Hunter John Siblett - Pat McCarty Phone 308-762-2050 2000-5500 Prime Prospects Regular Wednesday - Specials Friday	

lowest infestation by district. The NU entomologist warned that this forecast does not predict what will happen in 1970.

Your Standard Oil Farm Man, CROP/GUIDE... Manager, and all the folks at the Standard Oil Farm and Home Center extend their greetings at this joyous time of the year. We hope our products and services have helped make your farming more profitable and your living more comfortable. We look forward to being of even more service in the year ahead.

NEAR NEW MACHINERY AND SOME MILKING EQUIPMENT

GARLAN REED SALE

3 MILES EAST OF OSMOND

FRIDAY, DECEMBER 19

1:00 p.m.

SEE SALE BILLS FOR DETAILS

WAYNE FARM & HOME CENTER

For products, information and technical assistance, call the Standard Oil Farm & Home Center or your Standard Oil Farm Man.

OFFICE: Highway 35, East
PHONE: 375-3510

CLARKSON L. L. Lopour 892-3151	EMERSON G. D. Moody 695-2480	LAUREL Walter Urwiler 256-3409
NORFOLK A. R. Haight 371-4877	PIERCE E. C. Herbstheimer 329-4695	RANDOLPH J. H. Sauer 134
WAYNE G. E. Fletcher 374-2687	PENDER Richard M. Smith 972-2422	WAKEFIELD M. J. Schwanen 287-2223

*G. C. Schafer, Manager
L. W. Skokan, Farm-Advisor*

PUBLIC NOTICES

Every government official or board that handles public money, should publish at regular intervals an accounting of it showing where and how each dollar is spent. We hold this to be a fundamental principle to democratic government.

LEGAL PUBLICATION

LEGAL NOTICE
Notice is hereby given that the Wayne County Commissioners will hold a special meeting on Tuesday, December 23, 1969 at 9 a.m. at the Wayne County Courthouse, by N. F. Wetke, County Clerk (Pub. Dec. 18)

Snakes are neither wet nor slimy, National Geographic says. Actually, they are dry and warm.

KING'S

Sunday, Dec. 21



THE OLD MIXER-UPPER
EDDIE SKEETS
And His Orchestra
Admission \$1.50
Christmas Night
ADOLPH NEMETZ
And His Orchestra
Admission \$1.50

LEGAL PUBLICATION

Notice of Hearing on Final Account and Petition for Final Settlement in the County Court of Wayne County, Nebraska.
Case No. 2455.
In the Matter of the Conservatorship of Hattie Crane.
The State of Nebraska, to all concerned: Notice is hereby given that a Petition has been filed for final settlement herein requesting approval of Final Account and Discharge and determination of fees and commissions which will be for hearing in this court on December 19, 1969, at 10:00 o'clock A.M.
Laverna Hilton, County Judge (Seal)
(Pub. Dec. 4, 11, 18)

LEGAL PUBLICATION

Notice of Hearing of Petition for Final Settlement of Account in the County Court of Wayne County, Nebraska. Estate of Alfred J. Krause, Deceased. No. 3898, Dec. 9, Page 384.
The State of Nebraska, to all concerned: Notice is hereby given that a petition has been filed for final settlement herein, determination of heirship, inheritance taxes, fees and commissions, distribution of estate and approval of final account and discharge, which will be for hearing in this court on January 5, 1970, at 2 o'clock P.M.
Laverna Hilton, County Judge (Seal)
(Pub. Dec. 18, 22, Jan. 1)

LEGAL PUBLICATION

WAYNE SCHOOL BOARD PROCEEDINGS
December 8, 1969
The regular meeting of the board of education was held in the board of education room of the high school on Monday, December 8, 1969 at 7:30 p.m.
Moved by Sandahl, seconded by Brandt to adjourn the November 3, 1969 meeting. Ley, Brandt, Plesner and Sandahl aye, no nays.
Meeting was called to order by Vice-President Plesner. The following members were present: Dorothy Ley, Irv Brandt, Morris Sandahl and Dean Plesner. Dean Schram and Lynn Roberts were absent.
The minutes of the previous meeting were read. Moved by Sandahl, seconded by Brandt, that the minutes be approved. Motion carried. Ley, Plesner, Sandahl and Brandt aye. No nays.
The bills were reviewed. Moved by Ley, seconded by Sandahl, that they be allowed as read. Ley, Plesner, Sandahl and Brandt aye. No nays.
ADMINISTRATION
Baker Paper Co., Office supplies, 11.25
IBM Corp., Same, 6.53
Norfolk Office Equip. Co., Same, 28.78
Office Systems Co., Same, 15.25
Ross Martin Co., Same, 19.85
Sav-Mor Drugs, Inc., Same, 5.61
Stephenson School Supply Co., Same, 53.32
University Publishing Co., Same, 27.04
Wayne Herald, Same, 70.00
Coryell Derby, Admin. expense, 20.79
F. H. Hain, State school boards, 21.50
Wayne City School Activity Fund, Admin. expense, 122.86
Wayne Herald, Proceedings, 39.36
Wayne Herald, Same, 36.32
Johnson's Bakery, Public relations, 20.09
Wayne Super-Vals, Same, 7.22

LEGAL PUBLICATION

School Specialty Supply, Other expense, 60.06
University Extension Div., Same, 40.00
Jean Slamer, Typing-Tile III, 15.00
Jean Swanson, Same, 24.00
INSTRUMENTATION
Nat'l. School Methods, Inc., Prin. office expense, elem., 1.40
Pioneer-Publishing Co., Same, 2.79
H. W. Wilson Co., Library supplies, 53.30
Hammond Stephens Co., Prin. office expense, seccon., 48.98
School Specialty Supply, Inc., Same, 202.20
Jeanne Tompich, Nation lessons, 45.00
Harcourt, Brace & World, Inc., Textbooks, elem., 27.42
Scott, Foresman & Co., Same, 276.90
Stephenson School Supply Co., Same, 19.28
American Assoc. of Development of Science, Professional Library, 7.00
Roush Educational Corp., Same, 6.45
Institute for the Development of Educational Activities, Inc., Same, 13.00
Stephenson School Supply, Co., Same, 18.96
Wayne Herald, Same, 63.00
Lary McClure, Same, 12.15
Don Koening, Same, 35.07
Mike Hallett, Same, 1.49
Richard Metzger, Same, 32.21
Lary McClure, Same, 1.08
Robert Porter, Same, 35.00
Shelly Oil Co., Same, 6.08
Wayne City School Activity Fund, Same, 60.00
County Clerk, Drivers training, 4.00
Coryell Derby, Same, 91.82
OTHER SERVICES
Mary Ann Cottrell, November mileage, 26.00
Dorcas Recreational, Same, 5.80
Piles, 15.69
School Health Supply Co., Same, 90.48
Bentham Clinic, Physical, 6.00
Dr. H. S. Tennant, Same, 5.80
Coryell Auto Co., Bus 5, 6.94
Carlin Conoco, Same, 32.41
Farmers' Coop., Bus 6, 13.86
H. McClure Oil Co., Bus 3, 4.85
Wayne City School, Same, 10.18
Knox Auto Supply, Transportation expense, 7.54
M & S Oil Co., Bus 7, 47.19
Bus 9, 91.53; Bus 7, 123.23
H. McClure Oil Co., Bus 7, 123.23
Wayne City School, Same, 4.00
Knox Auto Supply, Transportation expense, 7.54
M & S Oil Co., Bus 7, 47.19
Bus 9, 91.53; Bus 7, 123.23
Merchant Oil Co., Bus 5, 12.00
Wornton Auto Service, Bus 2, 26.50
Coryell Derby, Patrol, 5.80; bus 12, 86
Merchant Oil Co., Lunchservice, 3.00
M & S Oil Co., Same, 10.71
W. S. Darley & Co., Other expense, 12.85
Ben Franklin Store, Same, 4.06
Dick Powers, Cited program, 10.10
Arrow Stage Lines, Band transportation, 100.00
Arlene Cook, Chair transportation, 6.25
Northern Propane Gas Co., Fuel, elem., 57.60
Peoples Natural Gas Co., Same, 395.16
Hoover Brothers, Inc., Same, 502.57
Hoopes Natural Gas Co., Fuel, seccon., 50.97
City Clerk's Office, Light & power, elem., 223.26
City Clerk's Office, Same, 417.41
Wayne Co., Public Power Dist., Same, 20.25
City Clerk's Office, Light & power, seccon., 329.70

LEGAL PUBLICATION

McGraw Learning Aids, Same, 141.75
Univ. Extension Division, Same, 26.00
Roush Educational Corp., Same, 6.45
Nat'l. Directory Service, Same, 5.07
SRA, Inc., Same, 689.39
Simon & Schuster, Inc., Same, 5.20
H. W. Wilson Co., Library supplies, elem., 5.40
Sloox City Music Supply, Band music, 21.47
Dietze Music House, Choir music, 10.71
H. W. Wilson Co., Library supplies, 53.30
Tams Witmark, Same, 1.75
Macaulay Educational Div., Science lab., 21.91
Dacone Scientific Co., Same, 35.80
Sargent-Welch Scientific Co., Same, 288.64
American Assoc. of Development of Science, Professional Library, 7.00
Roush Educational Corp., Same, 6.45
Institute for the Development of Educational Activities, Inc., Same, 13.00
Stephenson School Supply, Co., Same, 18.96
Wayne Herald, Same, 63.00
Lary McClure, Same, 12.15
Don Koening, Same, 35.07
Mike Hallett, Same, 1.49
Richard Metzger, Same, 32.21
Lary McClure, Same, 1.08
Robert Porter, Same, 35.00
Shelly Oil Co., Same, 6.08
Wayne City School Activity Fund, Same, 60.00
County Clerk, Drivers training, 4.00
Coryell Derby, Same, 91.82
OTHER SERVICES
Mary Ann Cottrell, November mileage, 26.00
Dorcas Recreational, Same, 5.80
Piles, 15.69
School Health Supply Co., Same, 90.48
Bentham Clinic, Physical, 6.00
Dr. H. S. Tennant, Same, 5.80
Coryell Auto Co., Bus 5, 6.94
Carlin Conoco, Same, 32.41
Farmers' Coop., Bus 6, 13.86
H. McClure Oil Co., Bus 3, 4.85
Wayne City School, Same, 10.18
Knox Auto Supply, Transportation expense, 7.54
M & S Oil Co., Bus 7, 47.19
Bus 9, 91.53; Bus 7, 123.23
H. McClure Oil Co., Bus 7, 123.23
Wayne City School, Same, 4.00
Knox Auto Supply, Transportation expense, 7.54
M & S Oil Co., Bus 7, 47.19
Bus 9, 91.53; Bus 7, 123.23
Merchant Oil Co., Bus 5, 12.00
Wornton Auto Service, Bus 2, 26.50
Coryell Derby, Patrol, 5.80; bus 12, 86
Merchant Oil Co., Lunchservice, 3.00
M & S Oil Co., Same, 10.71
W. S. Darley & Co., Other expense, 12.85
Ben Franklin Store, Same, 4.06
Dick Powers, Cited program, 10.10
Arrow Stage Lines, Band transportation, 100.00
Arlene Cook, Chair transportation, 6.25
Northern Propane Gas Co., Fuel, elem., 57.60
Peoples Natural Gas Co., Same, 395.16
Hoover Brothers, Inc., Same, 502.57
Hoopes Natural Gas Co., Fuel, seccon., 50.97
City Clerk's Office, Light & power, elem., 223.26
City Clerk's Office, Same, 417.41
Wayne Co., Public Power Dist., Same, 20.25
City Clerk's Office, Light & power, seccon., 329.70

LEGAL PUBLICATION

City Clerk's Office, Same, 546.60
City Clerk's Office, Water, 317.36
City Clerk's Office, Sewer, 327.50
Telephone, 9.15
NW Bell Telephone Co., Same, 383.04
Merchandise Co., Hosiery, 4.07
Fair-Play Scoreboard Co., Custodial supplies, 20.60
Green Products, Same, 48.80
Hillyard Sales Co., Same, 287.25
Griess Rezell Store, Same, 2.04
Harris Lathier Supply Co., Same, 124.55
Green Products, Same, 4.58
Safeway Stores, Same, 4.25
Tiedie Plumbing & Heating, Same, 4.58
Loyola Sales, Same, 4.07
Serrail-Trowel & Linen Laundry, Same, 249.30
Wayne Refuse Service, Disposal, 58.00
City Clerk's Office, Salary of re-claimer, 3.50
Coryell Derby, Upkeep of grounds, 6.80
Kopin Auto Supply, Same, 2.15
North Eastern Fertilizer Co., Same, 144.50
Wayne Farm Equipment Co., Same, 3.36
Cartwright Lumber Co., Upkeep of buildings, 370.69
Ben Franklin Store, Replace plant equipment, 10.57
Hoover Brothers, Same, 4.10
Wayne Machine Shop, Same, 7.99
Stephenson School Supply, Furni-ture, 1742.88
Stephenson School Supply, Same, 30.06
Bricklayers, Equipment repair, 1.84
L. W. McClure, Same, 21.90
Office Systems Co., Same, 34.15
Swanson TV, Same, 6.50
Ben Franklin Store, Home eq., 15.90
Midwest Shop Supplies, Industrial arts, 31.33
National Education Association, Phy. ed., 0.00
Educators Progress Service, Inc., Athletic & phy. ed., 8.00
CEE Manufacturing Co., Same, 85.40
Interstate Printers & Publication, Same, 6.43
Russell Sporting Goods, Same, 21.85
Russell Sporting Goods, Same, 70.61
Wayne Sporting Goods, Same, 416.43
Parkinson Music Co., Repair, 2.06
Hemle Audio Visual, Same, 278.42
Milo Meyer, Blade & scraper work, 31.50
Associated Lins. & Investment Co., Auto insurance, 983.17
First National Agency, Workmen's comp., 134.00
First National Agency, Adm'n. bldg. & contents, 16.00; audit workmen's comp., 668.00
Farmer's State Ins. Agency, Fire & lightning, 619.00
Northern Neb. Ins. Agency, Business, 7.00
First National Bank, Payroll accounting, 21.33
Coryell Auto Co., Windshield, 130.88
Tom's Music House, Band instrument, 100.00
Tom's Music House, String instrument, 96.50
Sloox City Music Supply, String music, 10.50
Hoover Brothers, Inc., Tables, 1450.50
Stephenson School Supply, Equip-ment, 303.70
New York Times, New Albany books, 85.00
TOTAL, \$18,870.14
(Pub. Dec. 18)

LEGAL PUBLICATION

The Wayne (Nebr.) Herald, Thursday, December 18, 1969 5

LEGAL PUBLICATION

LEGAL NOTICE
To all persons residing in or owning property within the City of Wayne County, Nebraska, or within an area within a one-mile radius of the City Limits of the City of Wayne County, Nebraska: You are hereby notified that the Mayor and City Council of the City of Wayne County, Nebraska will hold a public hearing on the 30th day of December, 1969, beginning at 8 o'clock P.M. at the Woman's Club room in the City Auditorium in the City of Wayne, Nebraska on the request for special use as a trailer camp of the following described real estate, to-wit:
Lots Two (2), Three (3), Four (4), Eight (8), Nine (9), Ten (10), Eleven (11), Twelve (12), Thirteen (13), and Fourteen (14), Block Two (2), Roosevelt Park Addition to the City of Wayne, Wayne County, Nebraska.
At such time and place all persons interested may appear in person or by counsel and be heard.
THE CITY OF WAYNE,
WAYNE COUNTY, NEBRASKA
By Dan Sherry, City Clerk
(Pub. Dec. 18)

4-H Club News

Hold Club Party
Busy Bee 4-H Club held their Christmas party in the home of Tammi Schultz Dec. 10. On the game committee were Carol Splitterger, Renee Nissen, Kathy Reinhardt and Dona Mae Nissen. A gift exchange was held and leaders served lunch.
Dona Mae Nissen, news reporter.

The Peppermint Rainbows

The Peppermint Rainbows met for the first time on Dec. 9. New officers were nominated and voted in. Cindy Hurd was elected president; Nille Kraemae, vice-president; Judy Hagaman, secretary; Amy Peterson, news reporter; Shirley Peterson, treasurer; and Ella Lindorf, Kerry Schultz and Karen Blittorf, entertainment committee.

Cars, Trucks Registered

It was decided to have one meeting a month until school is out and then to have two meetings during the summer. Dues were voted on and it was decided to have a Christmas party Dec. 30 at Cindy Hurd's house. The next meeting will be held at Mrs. Erwin Hagemann's home on Jan. 6. Leader is Mrs. Erwin Hagemann. Mrs. Basil Osburn, Mrs. Darold Kraemae and Mrs. Fred Hurd are assistant leaders.
Shirley Peterson, news reporter.

Organize Club

Hoskins Hustlers 4-H Club for boys was organized in the Harold Wittler home last Wednesday. Eight boys became members. Harold Wittler is leader and Willard Brumels, assistant leader.
Officers are Bob Anderson, president; Kent Wittler, vice-president; Steve Brumels, secretary-treasurer; and Randy Kleansang, news reporter. Jan. 13 meeting will be in the Norman Anderson home.

Don't be one of the "silent mass." If you disagree with our editorials, let us know about it.

Claim YOUR Date EARLY



List Your **FREE** In Farm Sale

THE WAYNE HERALD

FARM SALE CALENDAR

SCHEDULE OF FARM SALES WILL APPEAR EACH THURSDAY ON THE FARM PAGE.

Help yourself to this FREE HOSTESS SERVING TRAY



Yours for saving \$200 or more at Commercial Savings

...and get the top serving of returns on your insured savings

No matter how many serving trays you have, this will be the one you'll use most — and be proudest to show!
This famous Westwood tray combines the beauty of hand-carved, hand-finished wood with the durability and stain-proof quality of unbreakable plastic. Dishwasher and shockproof. Border features a beautiful "deep carved" Greek key design. The 14" x 21" size gives you plenty of room for several items when you serve your party group. Perfect for every-day use...makes a wonderful gift, any time.
Get your FREE hostess tray now while there's a choice of three antique colors — avocado, imperial walnut, heritage oak. Yours FREE for saving \$200 or more in a new or existing account at Commercial. Limit, one to an account, two to a family with more than one account.

4.5% per annum, compounded quarterly, on REGULAR SAVINGS accounts. Save by the 15th, earn from the 1st!
5% per annum, compounded quarterly, on 90-DAY SAVINGS accounts. Save by the 15th, earn from the 1st!
5.25% per annum, compounded monthly, automatically renewable. \$5,000 minimum or more in multiples of \$100.

COMMERCIAL SAVINGS and Loan Association

CENTRAL OFFICE, 45TH AND DODGE
4824 SOUTH 24TH • 6200 MAPLE • 25TH & M • 30TH & AMES • 7834 DODGE
and 122ND & WEST CENTER ROAD, OMAHA • 116 SOUTH 48th, NORFOLK, NEB

PLAN A MERRY CHRISTMAS WITH YULETIDE FOODS AT SAFEWAY'S MONEY-SAVING DISCOUNT PRICES!



SLICED BACON
Wilson's Crispbite
1-lb. Pkg. **69c**

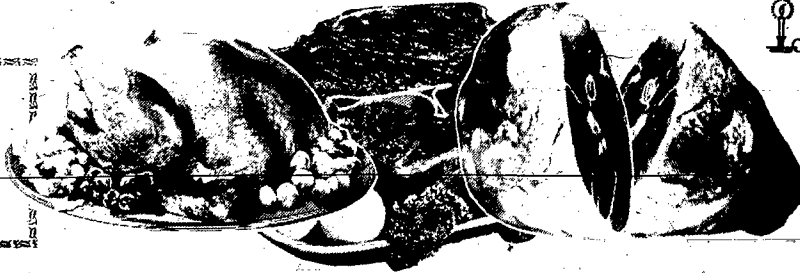
LARGE EGGS
Breakfast Gems
Dozen **69c**

Holiday Salads or Dessert... Jell-well

GELATIN
Assorted fruit flavors the entire family will enjoy;
3-oz. Package 7c

For the Holidays... Viva Brand, Paper

NAPKINS
Handy and convenient to use with holiday snacks;
Pkg. of 140 29c



FRUIT COCKTAIL
4 \$1.00
No. 303 Cans Del Monte or Town House

BEEF SUGAR
Save more money with Safeway's discount prices.
10-lb. Bag 98c

PEAS or CORN
5 \$1.00
No. 303 Cans Del Monte

PUMPKIN PIES
Bel-air, cut your baking time down, serve a frozen pie;
24-oz. Pie 29c

First quality, smoked

Boneless Hams Small sizes Lb. **\$1.33**

Cure 81 Hams Boneless, Hormel Lb. **\$1.49**

Canned Hams Popular 3-lb. Brands Can **\$3.49**

Canned Hams Popular 5-lb. Brands Can **\$5.69**

Corned Beef Safeway, Lean, juicy Lb. **89c**

7-Bone Steaks Choice Beef Lb. **69c**

Arm Swiss Steaks Beef Lb. **75c**

Pork Steaks Semi-Boneless Holiday Bonus Lb. **79c**

Ground Chuck Lean and juicy Beef Lb. **79c**

Link Sausages Oscar Mayer 1-lb. Pkg. **89c**

USDA GRADE-A TURKEYS
Manor House, 20 to 24-pound sizes—the top Government Grade for quality.
Lb. 33c

SMOKED HAMS
Shank Portion. For those holiday appetites that prefer Ham!
Lb. 57c

7-BONE BEEF ROASTS
USDA Choice Grade Beef, aged for finer flavor and tenderness!
Lb. 59c

USDA GRADE-A FRYERS
—from Safeway, Fresh, Whole Lb. **33c**

BONELESS ROASTS
USDA Choice Beef Shoulder Lb. **79c**

SMOKED HAMS Semi-Boneless, Whole or Half Lb. **89c**

SMOKED HAMS First Quality, Whole or Half Lb. **69c**

YULETIDE DISCOUNT PRICES ALL OVER SAFEWAY

Cream Cheese Lucerne; Grand for stuffing celery for the holiday 8-oz. Pkg. **29c**

Lucerne Egg Nog A refreshing Holiday Drink 1/2-Gal. Ctn. **89c**

Fancy Chunk Tuna Sea Trader, Light 6 1/2-oz. Can **25c**

MORE HOLIDAY SUGGESTIONS

Morsels Butter Scotch Nestles 6-oz. Pkg. **28c**

Oranges Mandarin, Town House 4 11-oz. Cans **\$1**

Libby's Pumpkin Solid Pack No. 2 1/2 Can **25c**

Bartlett Pears Town House No. 303 Can **29c**

Strawberry Preserves Empress 2-lb. Jar **79c**

Patty Margarine Piedmont 8-oz. Pat **10c**

Edwards Coffee Rich and Satisfying 2-lb. Can **\$1.29**

Facial Tissues Truly Fine 2-ply 4 Pkgs. of 200 **88c**

Bathroom Tissue Brocade 3 4-roll Packs **\$1**

ICE CREAM
Snow Star—Vanilla Choc., Neapolitan;
GALLON 98c

Fresh and Tasty, Skylark

Brown & Serve Rolls
Ready in a jiffy; just heat and serve.
Pkg. of 12 19c

Sandwich Bread Mrs. Wright's 16-oz. Loaf **22c**

Diet Bread Skylark, Light or Dark 2 16-oz. Loaves **49c**

White Bread Ovenjoy Have plenty 2 16-oz. Loaf **49c**

CHRISTMAS SUGGESTIONS

Enriched Flour Harvest Blossom 5-lb. Bag **39c**

McCormick Nuts Pecan Chips and halves Pkg. **79c**

Ripe Olives Town House Large, Ripe No. 300 Can **39c**

Cherry Pie Mix Thank You Brand No. 2 Can **39c**

Sliced Cheese Safeway; Ameri can or Pimento 1-lb. Pkg. **79c**

Aluminum Foil Kitchen Craft 25-Foot Roll **25c**

IT'S PICTURE TAKING TIME

Polaroid Color Film No. 108 Pkg. **\$4.39**

Kodak Color Film Cx 127 or 620 Roll **\$1.09**

Swinger Film Polaroid Black & White Roll **\$1.89**

Instamatic Film VP 126 12-Exp. Black & White. Pk. **55c**



SUNKIST NAVEL ORANGES Lb. **10c**

CRISP CELERY HEARTS Pkg. **39c**

LOUISIANA YAMS Lb. **15c**

Apples Delicious, Red or Golden 5 lbs. **\$1.00**

Tangerines or Tangelos, Sweet Lb. **19c**

Red Grapes Emperor Variety Lb. **29c**

Grapefruit Texas, Favorite 8-lb. Bag **98c**

Raisins Sunmaid or Town House 2-lb. Pkg. **69c**

Green Cabbage Lb. **10c**

Fresh Radishes Large Bunch **10c**

Potatoes Red, good quality 20-lb. Bag **99c**

Butter Lettuce Fresh Head **19c**

Yellow Onions 3-lb. Bag **39c**

Safeway Gift Idea

GIFT ORDER \$5.00

SAFEWAY

Give your friends and relatives a Gift Certificate from Safeway in any denomination you wish. They are redeemable at any Safeway in the United States and other countries.

Another Christmas Gift Idea...

CIGARETTES
Regular-size and Filter Kings **\$3.15**
100. Millimeter **\$3.25**
CARTON

A Merry Christmas to You from All of Us at Safeway!

CASH NIGHT DRAWING in our store Thursday at 8 p.m. for \$150.00.

SAFEWAY
the place to save money!

Will Close Christmas Eve at 5:30 and Be Closed Christmas Day. This ad good thru Wednesday, December 24, in Wayne.

FRUIT GIFT BASKETS
A grand gift for friends or relatives;
Each \$2.99 and up

FRESH MIXED NUTS
U.S. Extra Fancy; Almonds, Filberts, Walnuts, Pecans
Lb. 59c

SOUTHWEST
Wakefield
Mrs. Lawrence Ring
Phone 287-2620

day afternoon at 2 p.m. Cookies will be brought and plans will be made for the annual dinner with husbands in the Carl Sundell home Jan. 18. Mrs. Albert Sundell and Mrs. Harry Wert will be co-hostesses.

Society To Meet
Rural Home Society will meet with Mrs. Walter Chinn Thursday. Eighteen attend. WCTU. Eighteen attended the WCTU



Russell Stover
CANDIES
Christmas Gifts
FOR EVERYONE!

ASSORTED CHOCOLATES

Always a Christmas favorite... creams, nuts, fruits, caramels, nougats, toffees, crunches and chewy centers, dipped in finest dark and milk chocolate.

1 lb. \$1.95 2 lb. \$3.85 3 lb. \$5.75 5 lb. \$9.50
1/2 lb. \$1.00



ESPECIALLY FOR YOU ASSORTMENT

A beautiful NEW gift filled with a variety of chocolates and butter bonns... creams, nuts, crisp and chewy centers. 2 1/2 lb. \$4.25

Griess Rexall Store

221 Main St. Wayne Phone 375-2922



CHRISTMAS PARTIES ARE FUN. David Garlick, son of Mr. and Mrs. Antony Garlick of Wayne, held by Rhonda Moss, at left, was one of the 600 youngsters attending the Christmas Party at the city auditorium Saturday. Tau Kappa Epsilon, the Order of Diana and Kappa Delta Gamma, social

organizations on WSC campus, sponsored the affair. Talking to David and Rhonda are, from left to right, Claudia Thomas (a rabbit); Fred Johnson (caterpillar) and Ron Fazio (Jack Frost). The youngsters were entertained with games, a movie and Santa Claus throughout the day.

Christmas meeting in the Emil Ekberg home Friday afternoon. Mrs. Bessie Hill led devotions.

Ten dollars was donated to the Good Will shoe fund and \$7.36 to the Pepsi Cola fund. Mrs. Elmer Fleetwood will be the January hostess.

Have Farewell Party

Eleven families were in the Glen Lange home Friday evening at a farewell party for them. They plan to move to California after the holidays. Cooperative luncheon was served.

Mr. and Mrs. Philv Olson, Mr. and Mrs. Lawrence Carlson and Mr. and Mrs. Vern Carlson returned Sunday evening from a weekend trip to Tucson, Ariz.

Thursday Mr. and Mrs. Dean Frye, Puckner, Mo., arrived to visit her father, Warner Erlandson. All were supper guests in the Bud Erlandson home and were joined for the evening by the Robert Erlandson family, Sioux City. They and Mr. and Mrs.

Paul Burns and sons, Sioux City, were in the Warner Erlandson home Sunday.

Dinner guests Sunday in the Harold Meier home were his brothers, Les and family, Fremont, and Walter, Wayne.

Mr. and Mrs. Phil Ring had dinner in Lincoln Sunday with Mike and heard the Messiah at the University. Enroute home they visited in the Dr. William Houfek home, Wahoo, and heard the Messiah at John Kennedy College.

Visitors in the Con Munson home Dec. 2 for Julie's eighth birthday were Bernhard Kochs, Marilyn Kochs, Karl W. Ottes, Cliff Munsons, Carroll, and Harry Munson.

Twelve guests visited Mrs.

E. E. Hlypse for her 85th birthday Sunday afternoon.

Mrs. C. L. Bard was a dinner guest in the Harley Bard home Sunday for the hostess' birthday.

For Merlin Felt's birthday Wednesday Duane Lutts were supper guests. Myron Felt, Great Falls, Mont., was a supper guest Thursday enroute home from New York and his father, Arthur, Randy Shaws, Coleridge, were evening visitors and Marilyn was home from Lincoln for the weekend.

Friday evening Carl and Albert Sundells were in the Elmer Sundell home for his birthday.

Mr. and Mrs. Nell Sandahl, Anita and Karen moved into their new home last week. Some indoor work remains to be done.

CARROLL NEWS

Mrs. Forrest Nettleton - Phone 585-4833

Supper guests Monday in the Ken Eddle home for Kevin Meyer's third birthday were the Delmar Eddle family and the Vincent Meyer family, Randolph.

Guests Sunday in the Maurice Hanson home in honor of Mrs. Hansen's birthday were Mr. and Mrs. Louis Balcer, Pierce, Mr. and Mrs. Dennis Hansen and family, O'Neill, and Mr. and Mrs. Arthur Brummond, Stanton.

Thursday, Dec. 25: Worship, 9 a.m.

Guests Tuesday evening in the Allen Frahm home for Roger's birthday were Merlin Frahms, Wayne, Ervin Wittlers, Harold Wittler and Bonnie Frahm, Norfolk.

Neighbors Meet
Social Neighbors met Friday with Mrs. Robert Bodenstedt. Five members were present and held a Christmas gift exchange. Prizes were won by Mrs. Harold Stoltenberg and Mrs. Vernon Holamp. Jan. 15 meeting will be held with Mrs. Ken Eddle.

Churches -

Our Lady of Sorrows Catholic Church (Father Elmers, pastor) Sunday, Dec. 21: Mass, 9 a.m.

Methodist Church (Robert Swanson, pastor) Sunday, Dec. 21: Worship, 9:30 a.m.; Sunday school, 10:30.

Presby.-Congre. Church (Gall Axon, pastor) Sunday, Dec. 21: Worship, 10 a.m.; Sunday school, 11.

St. Paul's Lutheran Church (Rev. H. M. Hilpert, pastor) Thursday, Dec. 18: WL Christmas Day rehearsal, 7:30 p.m. Saturday, Dec. 20: Christmas program rehearsal at Carroll, 9 a.m. Sunday, Dec. 21: Worship, 9 a.m.; Sunday school, 9:50; Children's Christmas program, 7 p.m.

Club Meets Thursday
Woman's Club met Thursday in the club room. Hostesses were Mrs. Ellery Pearson, Mrs. Joy Tucker, Mrs. Lem Jones and Mrs. Emma Davis.

Twenty-three members answered roll call with a Christmas gift exchange. A \$10 gift will be sent to the Opportunity Center at Norfolk.

Mrs. Lyle Cunningham gave a reading, "The Origin of Many of Our Christmas Gifts." Twenty-seven baskets were packed and delivered for the golden aged of Carroll. Next meeting will be Jan. 8.

Have Christmas Supper
Happy Workers Club met Dec.

9 for their annual Christmas supper with eleven members at Marlene's Cafe. Afterwards they played pitch at the Woman's Club Rooms with prizes going to Mrs. Lowell Rohlf, Mrs. Myron Larsen, Clair Swanson, Herman Brockman and Mrs. Clifford Rhode. A gift exchange was also held. January 13 meeting will be with Mrs. Clifford Rhode.

Aid Meets

St. Paul's Lutheran Ladies Aid met Wednesday at the church social room for a 1 p.m. luncheon. Seventeen members and eleven guests, Mrs. H. M. Hilpert, Mrs. John Petersen, Mrs. Martin Hansen, Mrs. Vernon Schmoor, Mrs. Robert Hank, Mrs. Dean Owens, Mrs. Herman Thum, Mrs. Arlyn Hurlbert, Mrs. Lonnie Fork, Mrs. O. J. Jones and Mrs. Duane Granfield were present.

The Rev. Hilpert showed a film, "Christmas on Main Street," and a gift exchange was held. Mrs. Ed Fork accompanied group singing. Next meeting will be Jan. 14.

DIXON COUNTY COURTHOUSE NEWS

1970
James Walsh, Waterbury, Merr Agnes Noe, Allen, Ford Forrest Steele, Emerson, Dodge O. N. Knerl and Sons, Ponca, Ed Glenn Noe, Allen, Plymouth Wayne Land, Laurel, Volkswagen William Schutte, Allen, Chevrolet James Russell, Allen, Volk's Verzanni Chevrolet Company, Ponca, Chev

Harry Larson, Wakefield, Chev Norbert Berens, Waterbury, Chev Hart Vollers, Concord, Dodge Melvin Manz, Dixon, Ford 1969

Paul Day, Newcastle, Pontiac 1968 Lloyd Wendy, Dixon, Oldsmobile Larry Sherer, Wakefield, Starcraft Camper 1967

Joe Kunzman, Wakefield, Chev Helen Hohenstein, Ponca, Chev 1966

Carl Frerich, Allen, GMC 1964 Dea Karnes, Dixon, Chevrolet 1963

O. N. Knerl and Sons, Ponca, Lincoln 1962

Gaylen Kjer, Allen, Chev Sherill Johnson, Wymot, Chev Dea Karnes, Dixon, Ford 1961

Arnold Stark, Ponca, Ford Ray West, Dixon, Cadillac 1956

Agnes Noe, Allen, Dodge 1954

Robert Fritschen, Concord, Ford 1950

Rayne Peterson, Newcastle, Chev

REAL ESTATE TRANSFERS:
Bertha Luiken to Kenneth C. and Aldean H. Buck, the W. of Lot 2, and all of Lot 3, Block 38, City of Ponca, Dixon Co., Neb., (\$1,000 and other valuable consideration).

George Anderson and Ethel F. Anderson to Roy and Blanche Pearson, lot 2, Block 1, Carl-

son's address to Concord, Dixon County, Neb. (\$1,000 and other valuable consideration).

COUNTY COURT:
Charles L. Hites, Wakefield, reckless driving, \$20 and costs. Loren D. Fuchst, Allen, loaded shotgun in car, \$10 and costs.

Laurel

Mrs. Wanda Thompson
Phone 256-5788

Hold Coffee

A coffee hour was held Sunday morning at United Methodist Church to honor Allan Wickert Church to honor Allan Wickert and Mrs. Fred Burns for their many years in the choir.

Host Supper

The Rev. and Mrs. Richard Burgess hosted a supper Sunday for Sunday school teachers and their families. About 80 attended.

Mr. and Mrs. Louis Reynolds observed their 50th wedding anniversary Dec. 5. Guests were Mrs. Harold Burns, Mrs. Leland Johnson and the Martin Bernickss.

Karen Pitt, daughter of Mr. and Mrs. Farneth Pitt, entered Dixon Hospital Dec. 9 and was dismissed Dec. 14.

Churches -

United Methodist Church (Richard Burgess, pastor) Thursday, Dec. 18: Junior choir caroling party, 7 p.m.; senior choir rehearsal, 8.

Sunday, Dec. 21: Sunday school, 9:45 a.m.; worship, 11; children's Christmas program, 7:30 p.m.

Wednesday, Dec. 24: Christmas Eve candlelight service, 9 p.m.

St. Mary's Catholic Church (Michael Kelly, pastor) Weekly masses: 7:30 a.m. Thursday, Dec. 18: High school religion class Christmas party, 7:45 p.m.

Saturday, Dec. 20: Grade school Christmas party, 10:30 a.m.; confessions, 7 to 8 p.m. Sunday, Dec. 21: Masses, 8 and 10 a.m.

World Missionary Fellowship Church (Gerald Smith, pastor) Sunday, Dec. 20: Christmas program practices, 2 p.m.

Sunday, Dec. 21: Sunday school, 10 a.m.; worship, 11; Christmas program, 7:30 p.m.

Ernest Geiger Services Held In Allen Church

Funeral services for Ernest Geiger, 73, Allen, were held Wednesday at the First Lutheran Church, Allen. Mr. Geiger died of a heart attack at his home Dec. 15, 1969.

The Rev. John Erlandson officiated at the rites. Pallbearers were Gary White, Robert An-

draws, Larry Geiger, Dale Jackson, Lyle Geiger and Darryl Geiger. Herbert Ellis sang accompanied by D'Vee Koester. Burial was in Eastview Cemetery.

Ernest George Geiger, son of George and Minnie Pouch Geiger, was born May 25, 1890 at Spencer, S. D. He moved as a child from Spencer to the Allen community. He married Faye Cleveland Sept. 17, 1913 at Sioux City, Iowa. They farmed in the Waterbury and Allen communities until 1950 when they moved to their present home in Allen. He was a member of the First Lutheran Church, Allen. He was preceded in death by his parents, three brothers and one sister. Survivors include his widow, three daughters, Mrs. LeVerna White of Sioux City, Iowa, Mrs. Marie Andrews of St. Paul, Minn., and Mrs. Gaylen Jackson of Allen; a son, James of Waterbury; a sister, Mrs. Jess Truly of Laurel, and 16 grandchildren and 12 great grandchildren.

Dixonite Wins \$125; More Drawings Set

A Dixon man, George Crain, was present last Saturday evening during the weekly cash drawing at Laurel. Result: he took home a check for \$125.

Saturday's 8:30 p.m. drawing will now be worth \$50 to the person who is present when his name is drawn. The name will be announced in all the stores who take part in the weekly promotion.

The Laurel Chamber of Commerce's gift drawings will be held on Monday and Tuesday at 8:30 each night at the town's main intersection. Following the drawings, at 9 p.m., there will be drawings for \$50 cash gifts. You must be present to win those prizes.



BONNIE GOCHENOUER

of Humboldt, Ia., received the music department scholarship for study at Wayne State College this term as a freshman. She is a music major, planning to be a high school band director or a piano teacher. At Humboldt Community School she was active in most of the music organizations, was a member of the All-State Band for three years, took part in school plays. Her parents are Mr. and Mrs. J. W. Gochenouer.

WINSIDE STATE BANK

NEW! GOLDEN PASSBOOK ACCOUNT

W.S.B.

5% Compounded Daily Interest Paid Quarterly

WINSIDE STATE BANK
Phone 286-4545 MEMBER F.D.I.C. Winside, Nebr.

The Market Place of Northeast Nebraska

CLASSIFIED ADVERTISING RATES

DIAL 375-2600

THE WAYNE HERALD
114 Main Street, Wayne, Nebraska 68787

CLASSIFIED RATES BY THE WORD

WORDS	First Issue	Second Issue	Third Issue
Up to 14 words	1.00	1.00	Free
15 and up	7c per word	7c per word	Free

Minimum Charge \$1.00

- WANT ADS ARE CASH except for commercial accounts with billing previously arranged.
- ERRORS - newspaper responsible for only one incorrect insertion; advertising will be re-run.
- MULTIPLE RATES - apply when 3 issues of publication are consecutive without change in copy.
- COUNT each initial or set of figures as one word.
- DEADLINE - 5:00 p.m. Tuesday for Thursday issue and 5:00 p.m. Friday for Monday issue.

Jewel by TRIFARI

LEADLEY DESIGNERS CONCEPTED

MUSTRE is the look

The glow of simulated pearls against the gleam of golden or platinum-toned Trifanium makes these the prettiest pendants for the new soft looks and for tailored dressing, too.

Dale's Jewelry
Dale Gutshall, Owner

CHRISTMAS IDEAS

Computer Crafted Color

RCA has the brightest, big-screen color TV picture you can buy.



New Portable Color with A.F.T.I. Power-packed RCA New Vista® Color with Automatic Fine Tuning (A.F.T.), many other deluxe features.

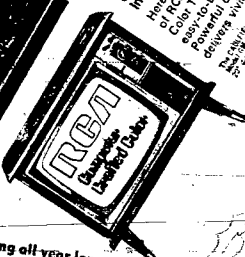
Computer Crafted Color by RCA

As Low As Model EM 417 **\$299⁹⁵**

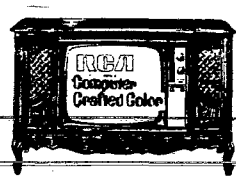
BUY NOW -

First Monthly Installment Due Febr. 12, 1970

Value priced console color in compact size here is the luxury of RCA console color. Easy-to-buy price, powerful chassis delivers vivid color.



Give the gift that keeps on giving all year long



RCA Solid State® Color TV with A.F.T. The ROCKFELLER Model GM452. None tube rectifier.

Luxury-feature Color with A.F.T. The STOCKHOLM Model GM454. 27" dia., 26 1/2" sq. in. picture.

The finest gift for the whole family

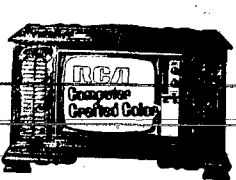
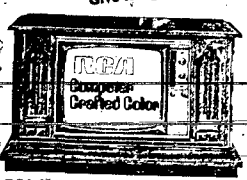


Solid State® Color Console with A.F.T.I. The LUXEMBOURG Model GM453. 27" dia., 26 1/2" sq. in. picture. Solid state means rugged reliability, built-in fine tuning, 60-watt base. Come see it.



Low, low price for tube-free Color TV. Advanced Automatic Tuning (A.F.T.) corrects signal electronically. The LANSING Model GM451. 27" dia., 26 1/2" sq. in. picture.

Give the gift that keeps on giving all year long



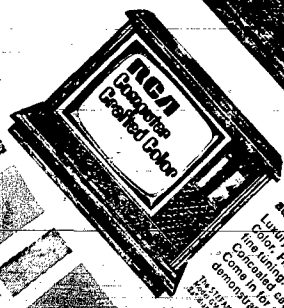
RCA Solid State® Color TV with A.F.T. The LANSING Model GM451. 27" dia., 26 1/2" sq. in. picture. None tube rectifier.

Solid State® Color TV with A.F.T. The CHATFIELD Model GM457. 27" dia., 26 1/2" sq. in. picture. None tube rectifier.

The finest gift for the whole family



Solid State® Color TV with A.F.T. The LANSING Model GM451. 27" dia., 26 1/2" sq. in. picture. Solid state means rugged reliability, built-in fine tuning, 60-watt base. Come see it.



Color console fine tunes automatically! Color Flite-line console features fine-tuning, 60-watt base, 60-watt base, 60-watt base.



Trans Vista® Solid State® Color TV Entertainment Center. The BIRMINGHAM Model GM455. 27" dia., 26 1/2" sq. in. picture. None tube rectifier.



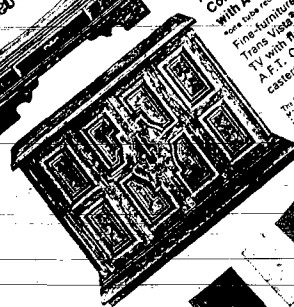
Color TV Home Entertainment Center. The BRANSON Model GM456. 27" dia., 26 1/2" sq. in. picture.



Color TV and Stereo/Radio combination. Color with A.F.T., 6-speaker stereo, Computer Crafted radio tuner.



Color console with flite-line fine tuning! Advanced Automatic Tuning (A.F.T.) corrects signal electronically. The LANSING Model GM451. 27" dia., 26 1/2" sq. in. picture.



RCA Solid State® Color TV with A.F.T. Fine-tuning, 60-watt base, 60-watt base, 60-watt base.



Swanson TV and Appliance

311 Main Street Phone 375-3690

Huge New Engine Latest Addition to Light Plant

Although many taxpayers in the city may not be aware of it, they own an industry valued at approximately \$3,400,000.



Norbert Brugger
Plant Superintendent

That industry — the city light plant — is holding open house this Sunday afternoon in order to give the residents of the city and area an opportunity to tour the plant and get a look at the latest addition to the plant.

The addition of the new engine — a 20-cylinder Cooper-Bessemer — is just one more step in the growth and modernization of the city plant, a process which has hardly halted since the plant was first started just before the turn of the century. According to city officials and others who work closely with municipal light departments, the new engine makes Wayne's plant one of the most modern and well-equipped plants in the state.

The engine itself is unique to Nebraska, for no other city in the state has a dual-fuel engine as large as Wayne's. Finally in-

stalled only late this fall, the engine is rated at 7,120 horsepower and is capable of producing 5,125 kilowatts. It brings the total kilowatts the six engines at the plant are capable of producing to 14,375.

One of two in use in the United States, the engine is so heavy when completely put together that it had to be shipped on three separate railroad cars because the rails and bridges from here to Sioux City were not capable of handling the weight. Total weight of the engine and generator: 145 tons.

Because of that enormous weight, the engine rests on its own foundation, a foundation of two massive blocks of reinforced concrete. The first block of concrete is 30 inches thick and extends beyond the engine two feet on each side. On top of this is a block of reinforced concrete which is about nine feet tall. Tied to that is the engine and generator. Although the engine does not touch the floor of the light plant, it can still cause some slight vibration in the building when it is running.

But probably more surprising than the physical dimension of the engine is the fact that no city or private property has been pledged in support of the bonds issued to pay for the engine.



Bill Mellor
Wire Chief

Although the new dual-fuel engine cost the city \$603,547, it is being paid off completely through revenue bonds. That is, those who loaned the money for the engine were so certain that the light plant would continue making



Herman "Bud" Wacker
Plant Engineer

money as it has in the past that they agreed to take a part of the plant's profit as their payment. The citizens of Wayne are not being taxed directly in order to pay for the new addition to the light plant.

That \$603,547 covered the cost of the engine, installation and preparation for production. The installation itself was no small matter, for the manufacturer made an error and later had to pay to knock out and extend the wall and roof in the rear of the building in order to get the engine into the plant.

At the same time as the city has been putting money into the city light plant in order for it to meet the demands of its customers, the city has also reduced electrical rates so that customers in Wayne are now paying less for their electricity than they were 10, 20 or 30 years ago. The latest reductions in rates came in October of 1967 for residential customers, in February of last year for industrial customers and in December

of last year for commercial customers.

In other words, users of electrical power in the city are paying less today than they were in the past even though the cost of such things as food, clothing and automobiles has continued to rise.

However, city officials note that the city's electric rates cannot continue their decline in face of the rising costs in such things as labor, supplies, fuel and so on. The next change in rates, they note, will probably be an increase for the consumers in the city.

Before the city council decided to purchase the new Cooper-Bessemer engine, considerable thought was given to the possibility of purchasing power from another source. Why not, some thought, purchase power from another producer and save the city the cost of a new engine?

The council decided against this for several reasons:

—First, money paid to a producer of electricity outside the city stays outside the city. But if a city produces its own electricity, it creates jobs and pays salaries to employees within the city.

—Second, there is always the possibility of outages and interruptions because of severe



Ray Berg
Assistant Plant Engineer

weather or equipment malfunction when electricity is transported over long distances. The chance of outages is present when a city produces its own electricity, but that possibility is much greater when power is "shipped" in.

—Third, the city light plant has proven that it can make a profit year after year. Therefore, it would be smart business if the city could expand the plant and still have it show a profit. The profit can then be turned back to the taxpayers in the city, lessening their tax load in the long run.

How much money was the council talking about when it considered salaries of those who are employed at the light plant?

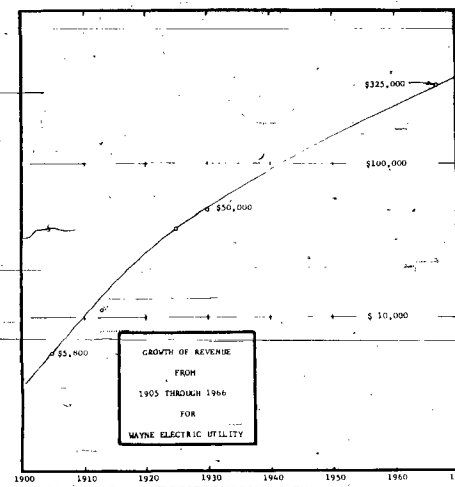
Total salaries for the 12 employees at the plant and for the administration and bookkeeping involved with its production amounted to about \$83,000. Since economists compute that each dollar in a community will turn over three times during a year, the city light plant means an additional \$250,000 for the city, most of which would not be present if power were purchased elsewhere.

Power outages, something of a common occurrence in communities who "ship" in their power, are almost non-existent in Wayne. There have been a few in the past year, but these have been attributed to problems during shakedown of new equipment, according to Norbert Brugger, superintendent at the light plant.

When the city does have power outages, it has a distribution crew who can tackle the problem and get it solved. That crew, headed by Wire Chief Bill Mellor, handles all the jobs involved in getting the power which is produced at the plant distributed to the ultimate customers. Some of the jobs they take on are installing new poles, repairing or replacing lines in the city and building in new services which may be demanded by customers.

Handling the duties of producing that power at the plant are a group of men headed by Superintendent Brugger, Plant Engineer Herman "Bud" Wacker and Assistant Plant Engineer Ray Berg. They are the ones who make sure that enough engines are running to take care of the load. The operators check the equipment day and night to make certain that everything is functioning correctly to keep the plant producing at the highest efficiency.

Light Plant's Revenue Shows Constant Growth



City Produces Power At Competitive Rates

How competitive is the city's light plant? Does it produce electricity for the city at rates comparable to those of such electrical producers as Consumers Public Power District and Omaha Public Power District?

Answers to those questions are contained in figures compiled

for the city council by the city's engineering firm. Those figures show that the city's electrical light plant compares very favorably with those two mentioned and in some instances is able to produce electricity to its residential customers at rates lower than those of one of them.

light plant is the amount of lubricating oil that goes into one of those large engines. The new engine recently installed — the 20-cylinder Cooper-Bessemer which can generate about 7,120 horsepower — takes a total of 2,200 gallons of lubricant.

That amount of oil would enable an automobile owner to change oil in his car about 1,760 times or about five times each year for the next 352 years.

And that lubricating oil goes into only one engine. There are five other engines, although none is as large, at the city light plant which require lubrication when in operation.

For the few residential customers who use only 20 kilowatt-hours per month, the rate they are charged by the city is seven cents per kilowatt. That seven cents is slightly above the six cents charged customers of CPPD and the five cents charged customers of OPPD.

But for residential customers who use more electricity each month, the rates become more and more competitive:

—For users of 50 KWH per month, the city's rate is just over four cents a KWH, beating the CPPD rate of five and one-half cents but still slightly higher than OPPD's rate of three and one-half cents.

—For users of 100 KWH per month, the city's rate is about three and one-half cents. CPPD's is about four cents and OPPD's is about three cents.

—For users of 200 KWH per month, the city's rate drops to three cents per KWH. That is equal to the rate charged by CPPD but slightly higher than OPPD's rate of two and one-half cents.

Those people on residential rates who use more than 200 KWH per month are still getting their electricity at only slightly higher costs than customers of CPPD and OPPD, according to the figures compiled by the city's engineering firm. Those rates remain about one-half cent higher per KWH per month than the rates of the other two producers of electricity.

In other words, users of electricity in Wayne are able to turn on their television sets, cook a roast in the electric oven or pump the water to wash their car for about the same cost as customers of those other two large producers of electric power. And they are able to do so knowing that their power is being produced only a short distance from them in a plant they own and by people they know.

Knowing those things should be comforting to the residents of the city in several ways, says the city engineer.

If Wayne were being supplied electricity from a source miles away, there would be the chance that weather or natural disaster could interrupt that supply. Cities who get their power from a great distance have many more power outages than does Wayne, he says, and those get to be bothersome after the first few.

Power transmitted over great distances also has losses along the lines, at the substations and at other points, according to the engineer, and those losses have to be made up in the rates the companies charge their customers.

Also, the money electrical users pay for their electricity stays in the city, the engineer notes. If the city were to pay money to a producer far removed from the city, that money would be lost. This way, the residents are keeping the money in the city at the same time as they are getting electricity at rates competitive with those of other producers, he points out.

Congratulations to the City of Wayne

On Their

Fine New Addition

We are proud to have had a part in the construction and expansion of the building which houses this new engine.

OTTE Construction Co.

WAYNE, NEBRASKA

Six Large Engines Generate Electricity For Plant Customers

We too often take things for granted. Like electricity. Just what is producing the electricity at the city light plant so you will be able to shave each morning, dry those clothes after they are washed, watch that favorite western on television.

The following are the engines now installed in the city light plant. To make them more understandable to the layman, their horsepower rating is also given.

- Superior 1,000 KW/1,440 HP
- Nordberg 1,250 KW/1,750 HP
- Worthington 2,000 KW/2,820 HP
- Cooper-Bessemer 2,000 KW/2,790 HP
- Cooper-Bessemer 3,500 KW/4,892 HP
- Cooper-Bessemer 5,125 KW/7,120 HP

Light Plant's Gas, Oil Bill Staggering

If you think your car runs up a big gas bill in a year, just look at the gas and oil bill the city light plant rolls up in order to run its engines to produce electricity for its customers. It's almost unbelievable.

In the fiscal year of 1968 that bill — for fuel oil, natural gas and lubricating oil — amounted to a staggering \$78,622. In 1969 it amounted to just about that much, \$74,000.

That \$78,622 might be difficult to comprehend until you compare with something like the gas bill you run up in a year in order to operate your automobile for one year.

For a person who drives about 10,000 miles a year in an automobile which gets about 15 miles per gallon, that bill would pay for all of his driving for a total of about 205 years. The bill for the fuel and oil in 1969 would have supplied him with something like 240 years of driving. Probably as hard to believe as the gas and oil bill at the



CONGRATULATIONS

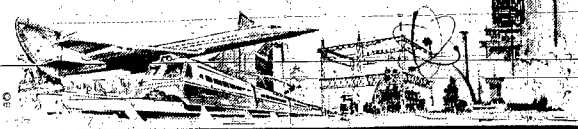
to the

City of Wayne

We are proud to have furnished all the Ready Mix for the installation of the new engine.

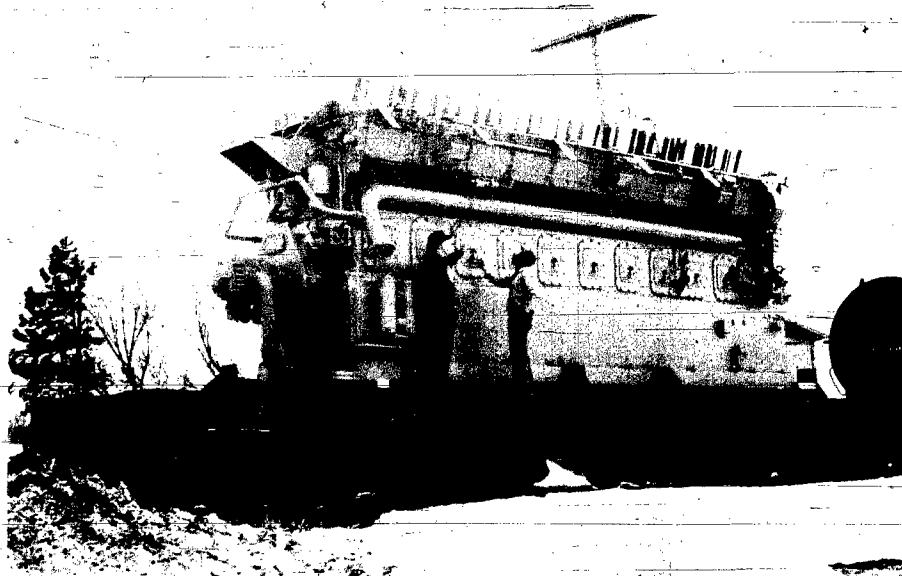
EINUNG READY MIX

Phone 375-1990 in Wayne



A GIANT STEP IN PROGRESS

Area Growth Compels Addition of 5125 KW Dual

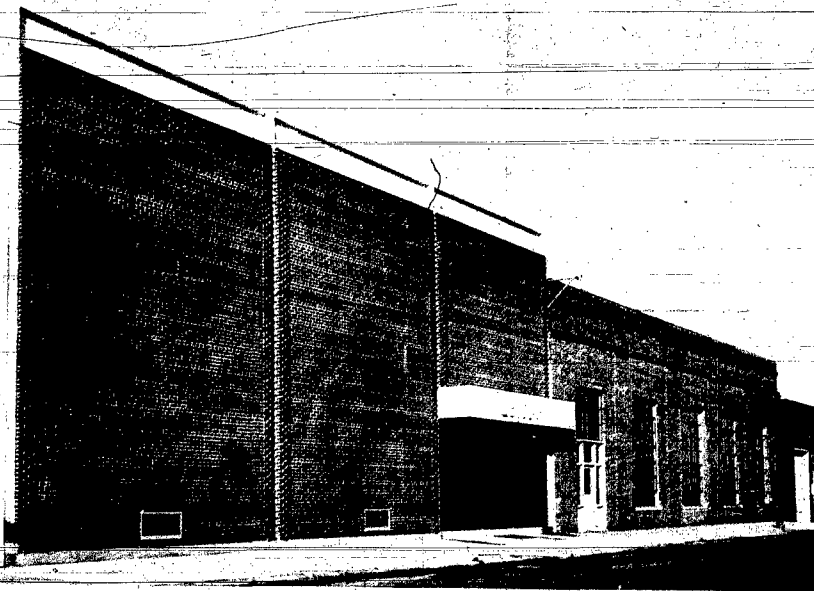


The new Cooper-Bessemer engine occupied a complete 16-wheel railroad flatcar on its way to Wayne from Grove City, Penn.

OPEN

SUNDAY

1 to 5



Wayne's city light plant contains 6 engine generator sets, producing up to 13,750 KW to serve all of its customers.

You Are Cordially
Tours of This

208 SOUTH MAIN

Wayne City

AS POWER PLANT EXPANDS

Fuel Diesel Unit to Boost Output to 13,750 KW

WELCOME

DEC. 21

p.m.



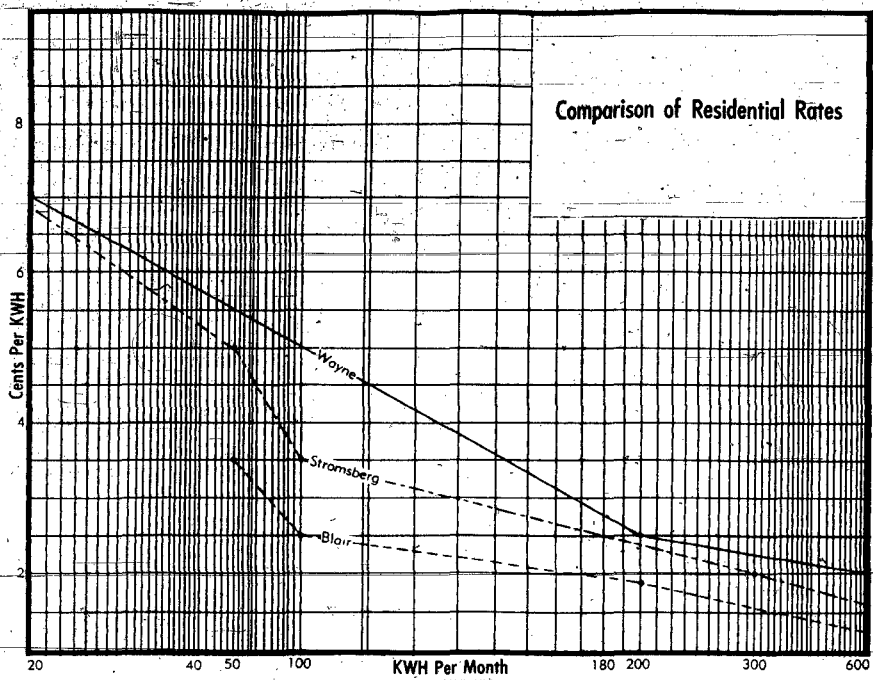
Wayne's latest addition is the Cooper-Bessemer LS V-20 engine rated 7100 horsepower. The engine drives a 5,125 KW Ideal generator. It is also the largest gas diesel engine in the state.

**Invited To Join Conducted
Ultra-Modern Facility**

*Coffee and Cookies
Will Be Served*

Power Plant

WAYNE, NEBRASKA



IS WAYNE'S PLANT COMPETITIVE? The above graph gives an idea of how the electrical residential rates in Wayne compare to those in two other towns in Nebraska: Blair and Stromsburg, Blair, which also produces its own power, is able to charge slightly lower rates than Wayne. This may change in the near future because Blair is considering a raise in rates to compensate for higher wages and to pay for a new engine. Stromsburg, which purchases its power, charges rates slightly higher than those charged in Wayne. For example, here are some rates families using a certain amount of power in each of the towns would be charged: 50 KWH — Wayne \$2.15, Blair \$1.75, Stromsburg \$3.00. 100 KWH — Wayne \$3.80, Blair \$3.00, Stromsburg \$4.75. 200 KWH — Wayne \$5.90, Blair \$4.60, Stromsburg \$6.75. 300 KWH — Wayne \$7.90, Blair \$6.05, Stromsburg \$8.75. 500 KWH — Wayne \$11.90, Blair \$8.55, Stromsburg \$11.95. For somebody who lives in an all-electric home in the three towns, the following rates would be charged if they used 3,000 KWH — Wayne \$40, Blair \$34.80, Stromsburg \$41.38.

City's Engineer Figures Cost of Our Electricity

Just what does it cost the taxpayers in the city of Wayne to produce electricity for themselves at the city light plant? The city's engineering firm has compiled figures which show that the city will pay out about \$166,300 to operate the light plant this year. Based on a production of 21 million kilowatt-hours, the city plant is producing electricity at the cost of \$.0079 per kilowatt-hour.

Figured into the cost of operating the plant for this year is \$48,400 for such fixed costs as interest and insurance, \$36,000 for such operating costs as plant labor and supplies, and \$81,900 for such variable costs as fuel and oil.

What does the city engineer anticipate it will cost the city to produce electricity in the coming years?

According to him, the city can expect a slow drop in the cost of producing electricity over the next five years at the same time as the demand for more electricity continues its gradual climb.

In 1970 the plant will probably be called upon to produce 22.6 million KWH. It will probably be able to do so for a cost of \$.0077. The production and cost for 1971 will be 24.9 MKWH and \$.0076, for 1972. They will be 26.8 MKWH and \$.0073, and for 1973 they will be 29.2 MKWH and \$.0071.

By 1974 the production of the

city light plant will have risen to a whopping 32 million KWH, a jump of about 50 per cent in only five years.

And, according to the engineer's figures, the cost of producing each kilowatt-hour will have dropped from this year's estimated \$.0079 to 1974's estimated \$.0069.

The city sells this power—the lifeblood of the city—to its residential customers at rates competitive with such producers as Consumers Public Power District and Omaha Public Power District.

And the city can do it without having to depend upon a power supply miles removed from the city. This aspect, having the source of power in the community, is an important one, according to the city engineer.

Having the source of our electricity right at hand, he says, doesn't put the city at the whim of emergencies which might come up because of severe weather. With a power source far removed from Wayne, he notes, the city could be without power if weather or natural disaster caused a failure at the power source or somewhere along the lines to Wayne.

12 Men Employed At City Light Plant

Twelve men are employed full time at the city light plant, several of them with an unusually long length of service to the city.

Those employees are on shifts to man the city light plant around the clock so it is constantly producing electricity for the customers it serves. They also man that light plant without fall throughout the year, for it never shuts down for weekends or holidays.

Following is a list of the employees and their length of service:

- Norbert Brugger, Superintendent, 42½ years.
- Bill Mellor, Wire Chief, 24½ years.
- Herman "Bud" Wacker, Plant Engineer, 20½ years.
- Ray Barg, Assistant Plant Engineer, 3 years.
- Al Grashorn, Lineman, 4½ years.
- Don Nelson, Groundman, 3½ years.
- George Henderson, Lineman, 4 months.
- Gerald Carmichael, Operator, 5 years.
- Clair Stokes, Operator, 5 years.
- Delmar Carlson, Operator, 4 years.
- Robert Lamb, Operator, 2 years.
- Albert Anderson, Assistant Operator, 4 months.

History of City Light Plant Reveals Constant Expansion, Modernization

- 1898 Citizens pass bond issue of \$4,500 to finance light plant.
- 1904 Purchase of new steam engine and generator for \$5,836.
- 1919 DC generators replaced with AC generators.
- 1928 Conversion from coal to fuel oil and purchase of first diesel engine.
- 1948 Conversion from fuel oil to natural gas.
- 1947-48 Purchase of 1,000 KW Superior.
- 1952 Purchase of 1,250 KW Nordberg.
- 1957 Purchase of 2,000 KW Worthington.
- 1960 Purchase of 2,000 KW Cooper-Bessemer.
- 1967 Purchase of 3,500 KW Cooper-Bessemer/Norbert Brugger Addition.
- 1969 Purchase of 5,125 KW Cooper-Bessemer.
- 1970's ?

Municipal Light Plant Has 1,617 Customers

The city light plant, which this year will probably produce between 21 and 22 million kilowatt-hours, sells its electricity to a total of 1,617 customers, according to the latest figures available at the city clerk's office.

Residential customers total 1,360, commercial customers total 229, farm customers total 27 and industrial customers total one. That one customer who qualifies for the industrial rate is Wayne State College.

Total amount of electrical energy produced in 1968 amounted to 19,162,800 KWH. Of that amount, 16,526,480 KWH

was distributed to the customers; the rest of the energy was used at such places as the light plant itself and at city electrical services which were not metered or was lost through the lines and points of distribution.

Not surprisingly, Wayne State is a huge consumer of the electrical power produced by the city.

The college used 29.2 per cent of the energy produced in 1968, just short of the 36.5 per cent used by the residential users in the city. Close behind the college in electrical consumption were the consumers on commercial rates. They used 29 per cent of

the energy. The rest of the energy was distributed to light the streets and highways in the city (3.8 per cent) and to serve the few rural customers (1.5 per cent).

Following is a breakdown of how those 16,526,480 kilowatt-hours produced in 1968 were distributed:

- Residential: 6,038,800 KWH
- Industrial: 4,824,600 KWH
- Commercial: 4,800,000 KWH
- Street Lighting: 615,280 KWH
- Rural: 247,800 KWH

Peak demand in 1968 was in August when the plant was producing up to a total of 4,825 kilowatts at any given time. Total production of kilowatt-hours in August amounted to 1,683,400. In December of last year the plant produced 1,808,400 KWH but the peak demand was only 4,250 KW.

July, December Peak Periods at Electric Plant

A plant producing electricity is just like any other industry or business: it has its high and low periods of production.

The peak periods of production at the city light plant—the times when its customers demand the most from it—usually come in the summer and winter, according to Superintendent Norbert Brugger.

The summer peak normally comes in July or August when many people are running their air-conditioners in order to keep their homes and businesses cool. People at this time are also using more electricity for such things as pumping water for their

lawn or their baths and showers.

Another peak comes in December when furnaces and heaters are running at their highest and when families are staying at home using such electrical appliances as television sets and record players a great deal.

Brugger explained that in the past the summer peak usually topped the previous winter peak and the next winter peak usually topped the previous summer peak. This may not happen in Wayne this winter and last July's peak may not be equalled until next summer, he noted.

What was that July peak? The city light plant was producing up to 5,400 kilowatts at any one time during that month. That compares to the minimum load of approximately 1,500 KW the plant is called upon to produce during early morning hours in the late spring or early fall. Right now the plant is peaking at about 4,200 KW, notes Brugger.

PROGRESS

CONGRATULATIONS to the People of Wayne on the Expansion of Your Municipal Power Plant

E. A. Pedersen of Omaha is proud to have shared in this project as the contractor for electrical wiring of the new diesel engine installed in the Wayne Municipal Power Plant.

E. A. PEDERSEN
ELECTRICAL CONTRACTORS
1049 South 20th, Omaha

CONGRATULATIONS to the CITY OF WAYNE on its POWER PLANT EXPANSION

This New Cooper-Bessemer Engine will step up power production by 5,125 KW.

Cooper-Bessemer is proud its engine was chosen as power supply for this new addition to Wayne. For many years we have strived to furnish the best in such equipment and we feel this is the finest of its type available.

COOPER-BESSEMER CORPORATION
OMAHA, NEBRASKA